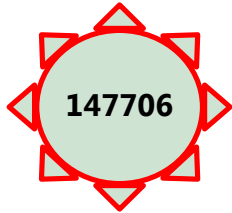
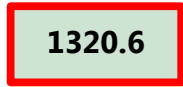


Detected cases



Latest 7 day rate per 100k

13-Mar to 19-Mar



Outbreaks and Clusters



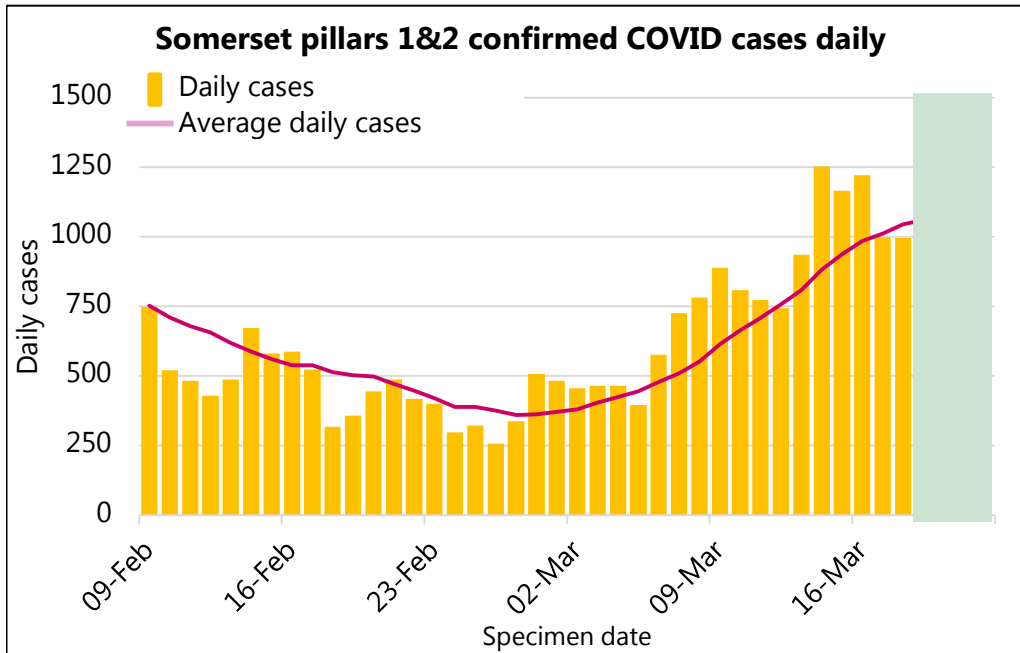
This represents the number of outbreaks and clusters currently being managed. Outbreaks are any situation with two or more cases, where at least two cases are known to be related to each other. Clusters are any incidents being managed at the same setting with two or more cases but where there is no established link between any of the cases.



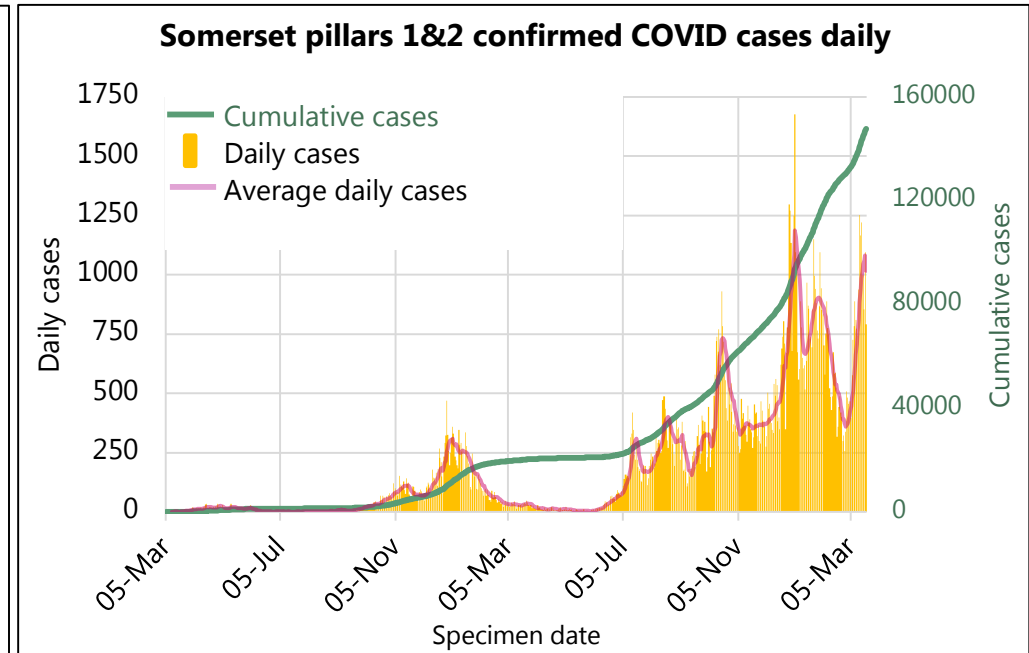
Please note that from the 31/01/2022 the way cases are calculated changed. Previously an individual was only counted the first time they had COVID-19. This has now changed and each infection or episode of COVID-19 is counted. This means case numbers appear higher than they would have done before. Further information can be found at the link below from the UK Health Security Agency (UKHSA).

[Cases definition now includes multiple infection episodes | Coronavirus in the UK \(data.gov.uk\)](#)

Most recent days of cases



Overall profile of the epidemic in Somerset



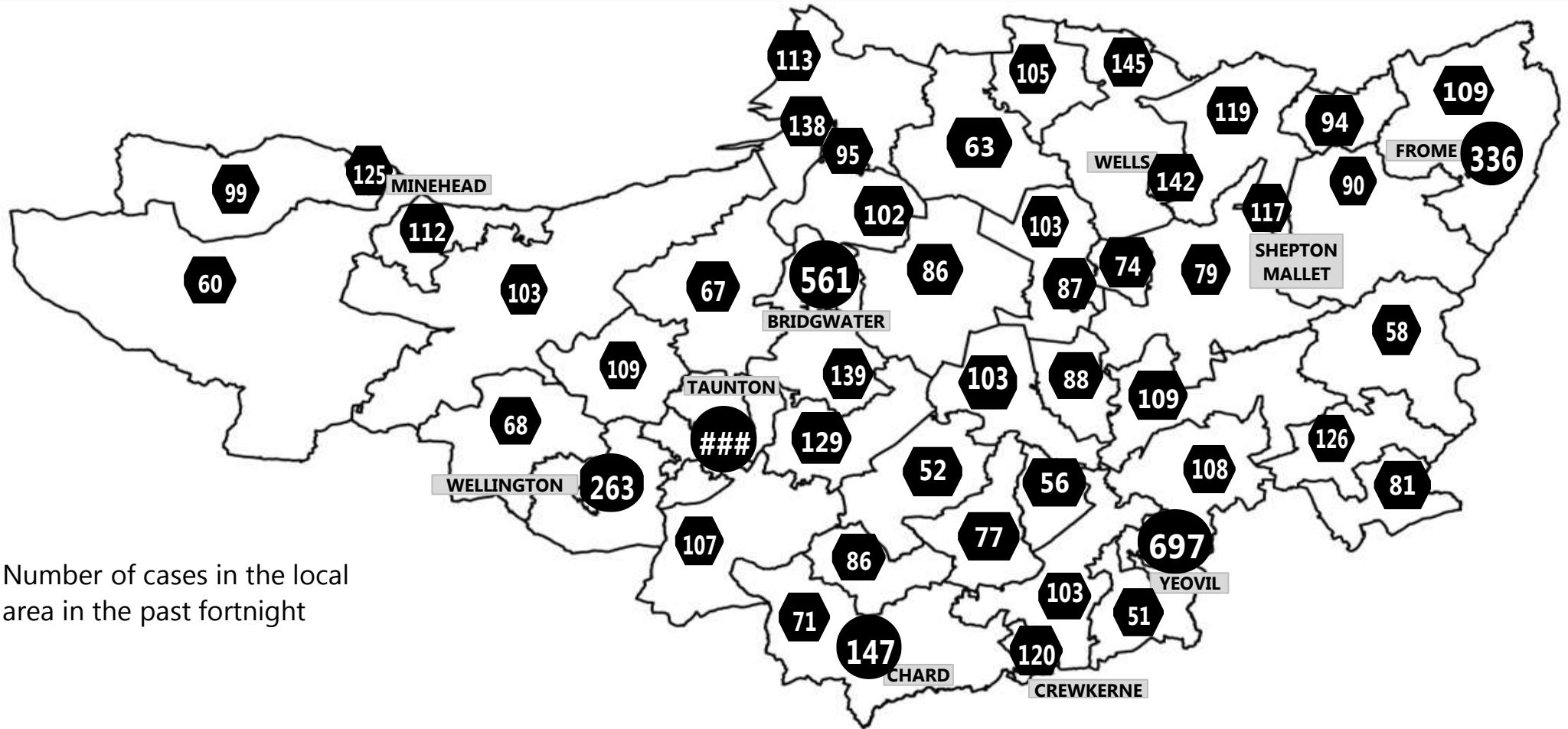
Somerset COVID-19 Local Outbreak Management Plan Dashboard - Cases

Weekly cases (excludes most recent three days with incompletely reported results)

District	20-Feb to 26-Feb	7 day rate per 100k	27-Feb to 05-Mar	7 day rate per 100k	06-Mar to 12-Mar	7 day rate per 100k	13-Mar to 19-Mar	7 day rate per 100k
Mendip	404	349.5	481	416.1	936	809.8	1495	1293.4
Sedgemoor	614	498.5	650	527.7	1020	828.1	1469	1192.6
Som W & Taun.	746	480.9	991	638.9	1771	1141.7	2318	1494.4
Sth Somerset	864	513.2	988	586.9	1571	933.2	2143	1273.0
Somerset	2628	467.4	3110	553.2	5298	942.3	7425	1320.6



Somerset COVID-19 Local Outbreak Management Plan Dashboard - Cases Map

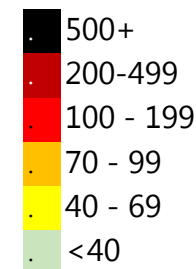


Number of cases in the local area in the past fortnight

Date range 13-Mar to 19-Mar

The numbers in this map show the current cases in the past 7 days, the colour of the tag shows the equivalent rate of positive cases per 100,000 population over a 7 day period. Case numbers in Taunton, Wellington, Chard, Yeovil, Bridgwater and Frome have been combined across the urban area with rates based on the combined area population.

Weekly rate per 100k



Somerset COVID-19 Local Outbreak Management Plan Dashboard - Wider Context

Latest R number range for the South West

1.0 to 1.4

Last updated on Friday 18 Mar 2022

Produced by:

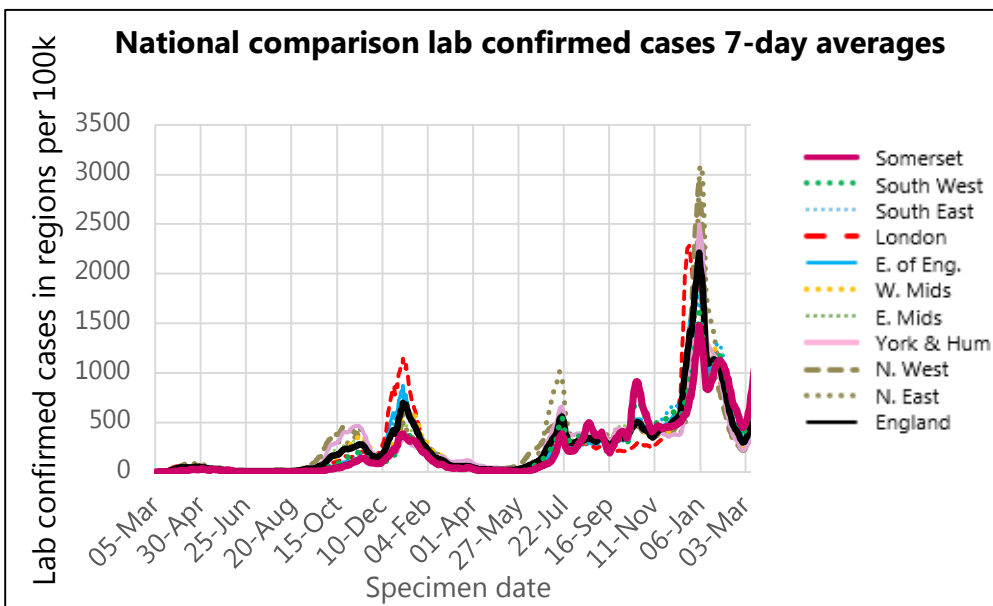
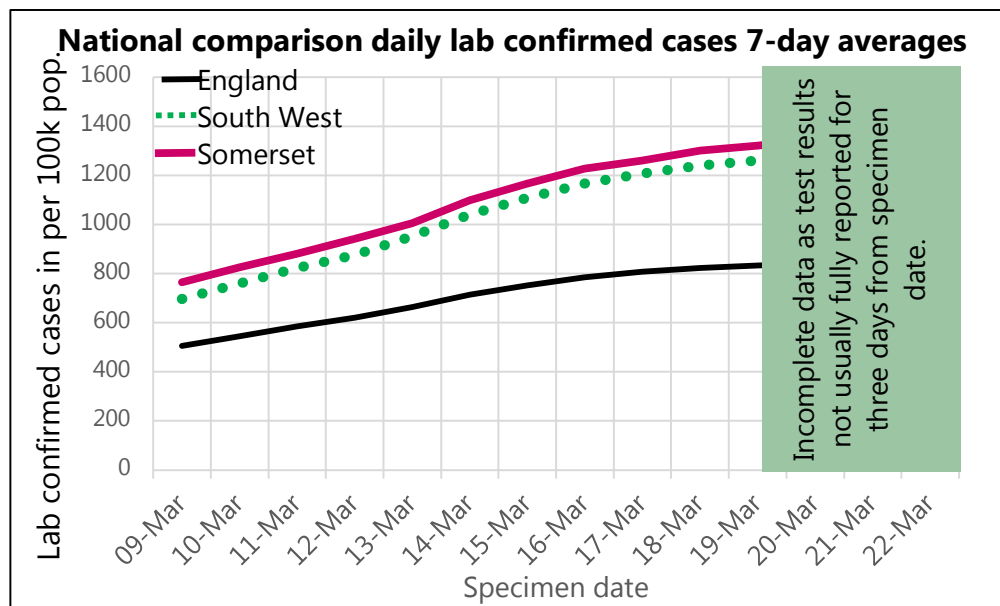
UK Government Scientific Advisory Group for Emergencies (SAGE)

What is R?

The reproduction number (R) is the average number of secondary infections produced by 1 infected person.

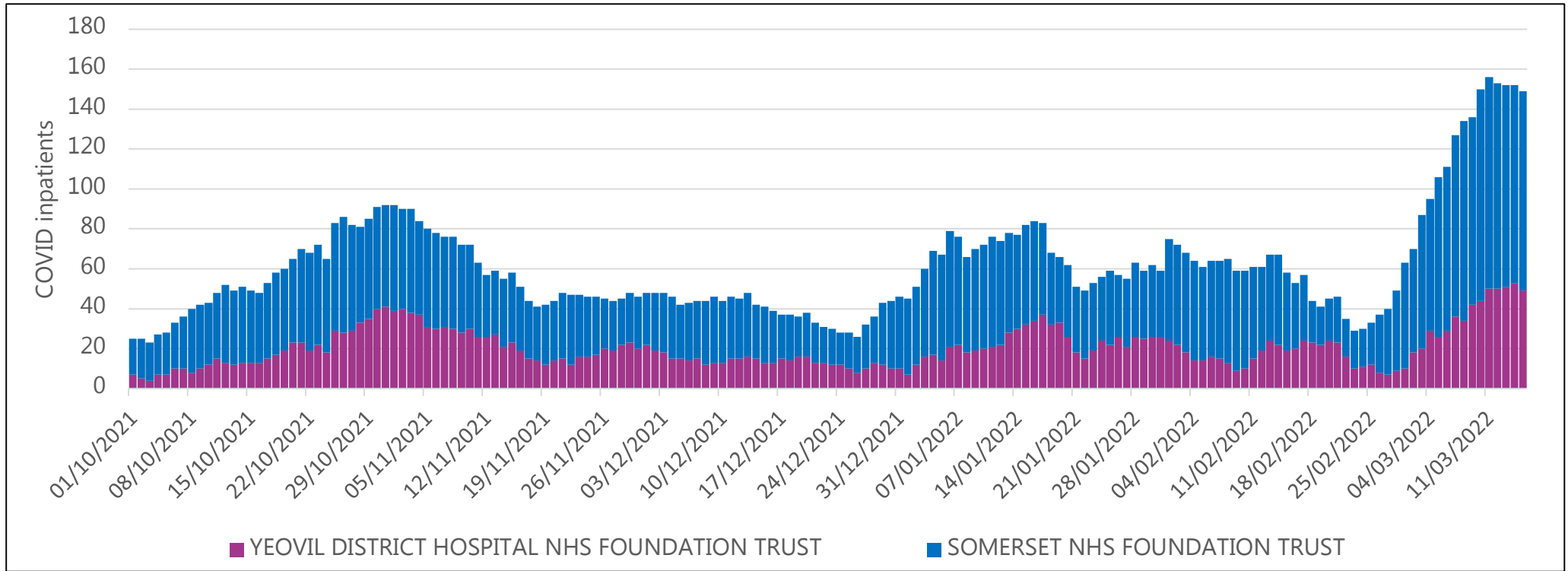
An R number of 1 means that on average every person who is infected will infect 1 other person, meaning the total number of new infections is stable.

Region	R
UK	No longer produced
England	1.1 to 1.4
East of England	1.1 to 1.4
London	1.1 to 1.4
Midlands	1.0 to 1.3
NE and Yorks	1.0 to 1.3
North West	1.1 to 1.4
South East	1.0 to 1.4
South West	1.0 to 1.4



Somerset COVID-19 Local Outbreak Management Plan Dashboard - Hospital Activity

All COVID patients in Somerset Hospitals



Somerset COVID-19 Local Outbreak Management Plan Dashboard - Deaths

COVID deaths week ending

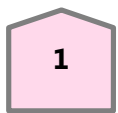
📅 11/03/2022

All COVID

Hospital



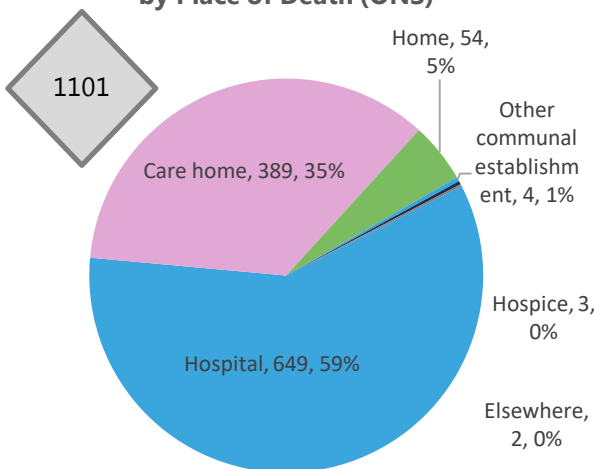
Care Home



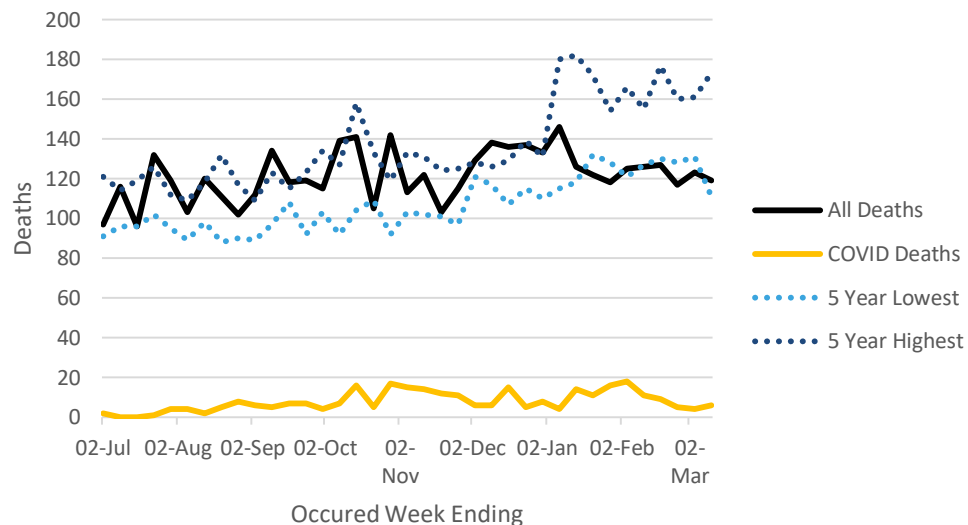
Other



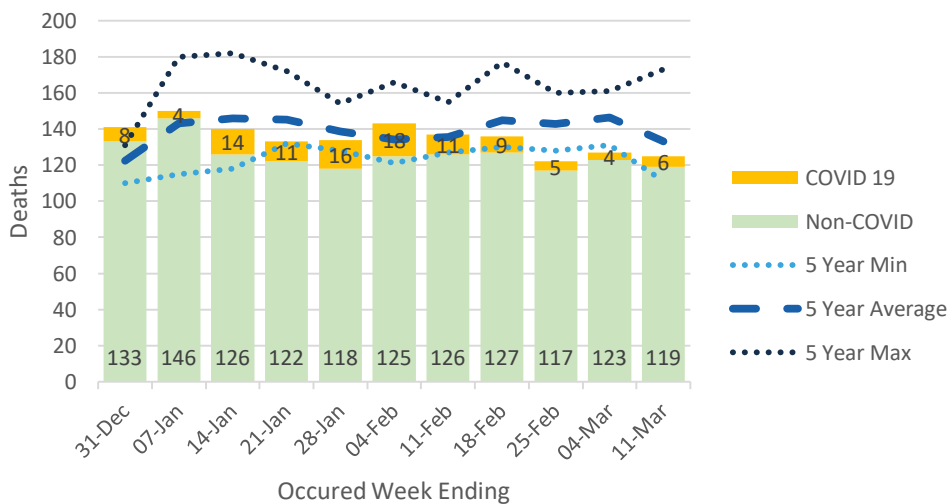
All COVID Deaths since the start of the pandemic in Somerset by Place of Death (ONS)



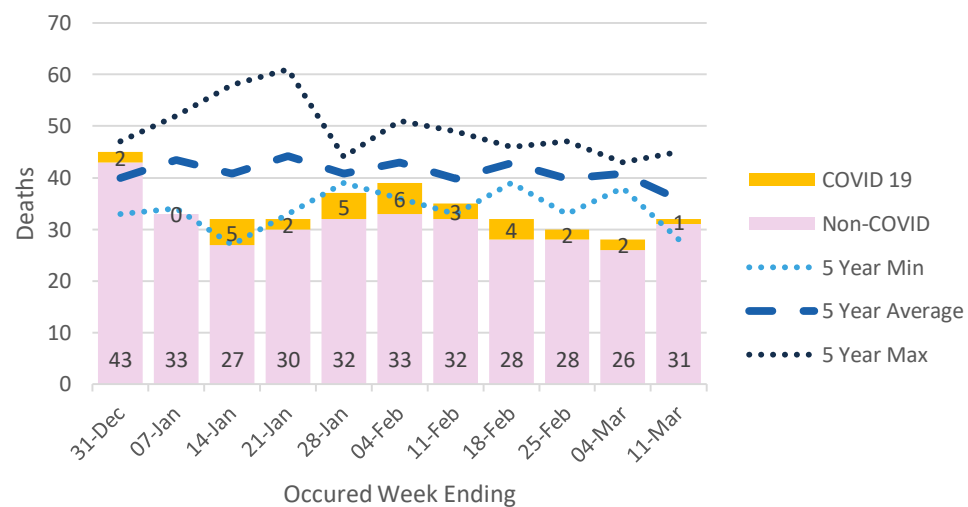
Somerset All Deaths (weekly) (ONS)



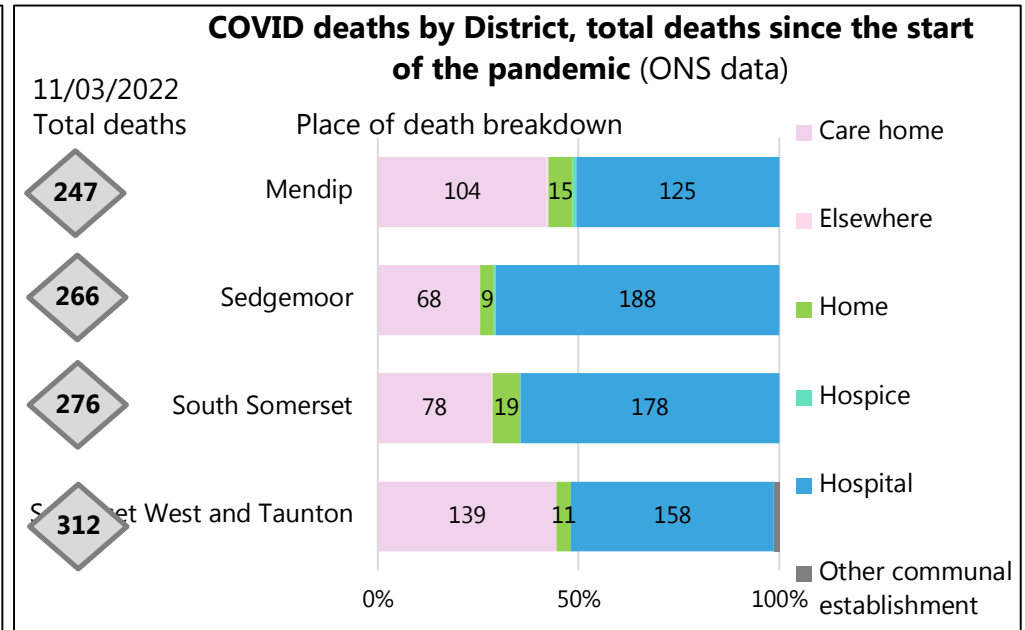
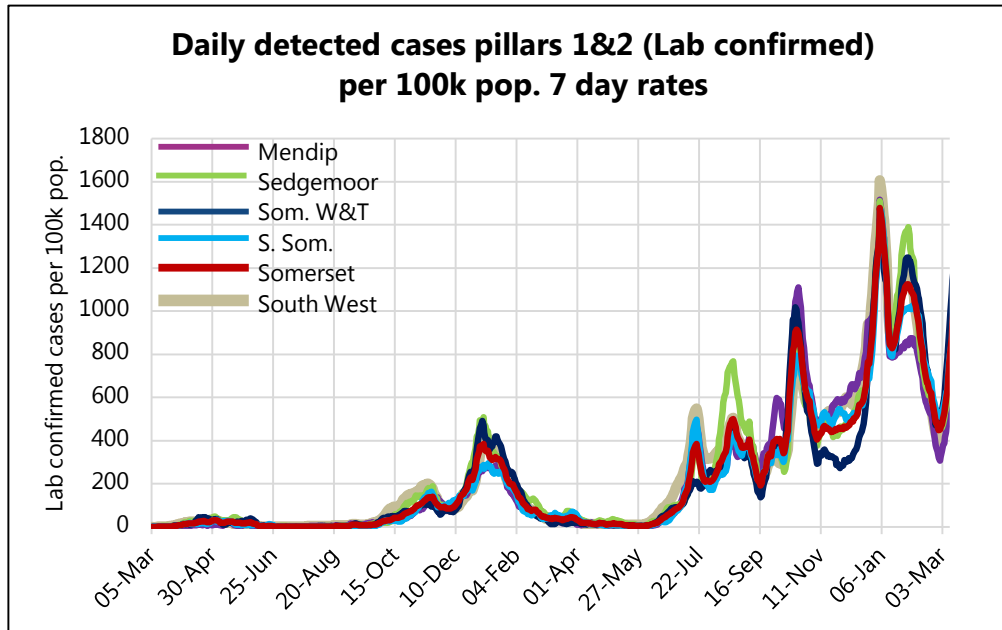
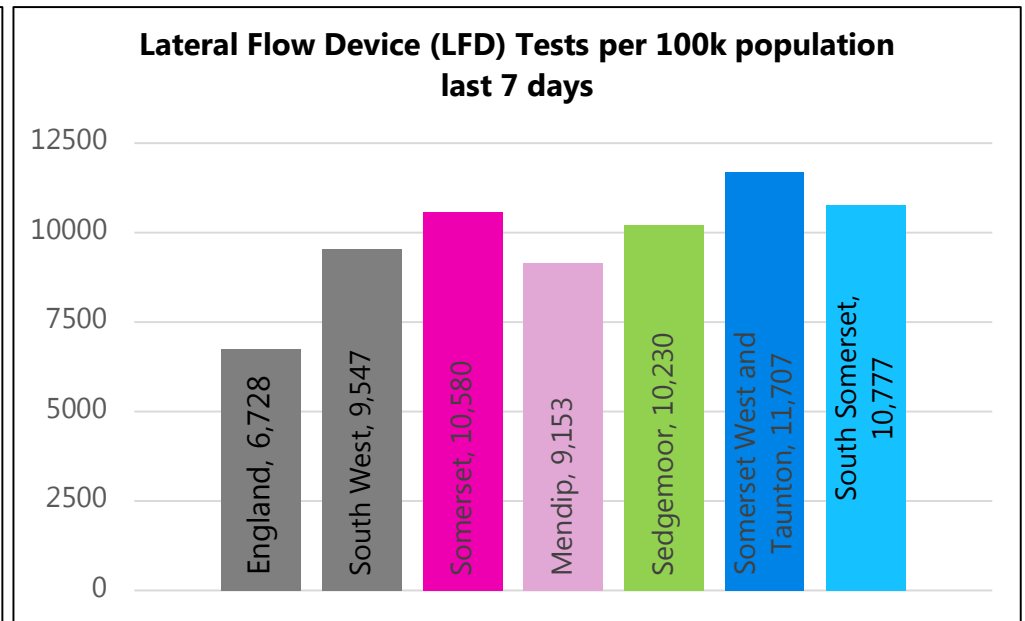
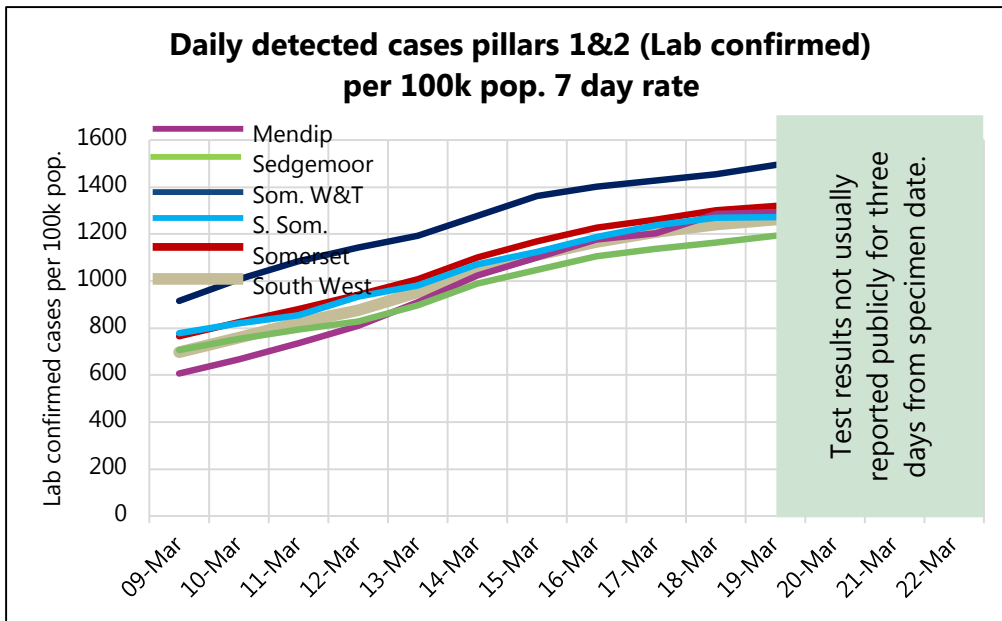
Somerset All Deaths (weekly) (ONS)



Care Home Deaths (weekly) (ONS)



Somerset COVID-19 Local Outbreak Management Plan Dashboard - District focus

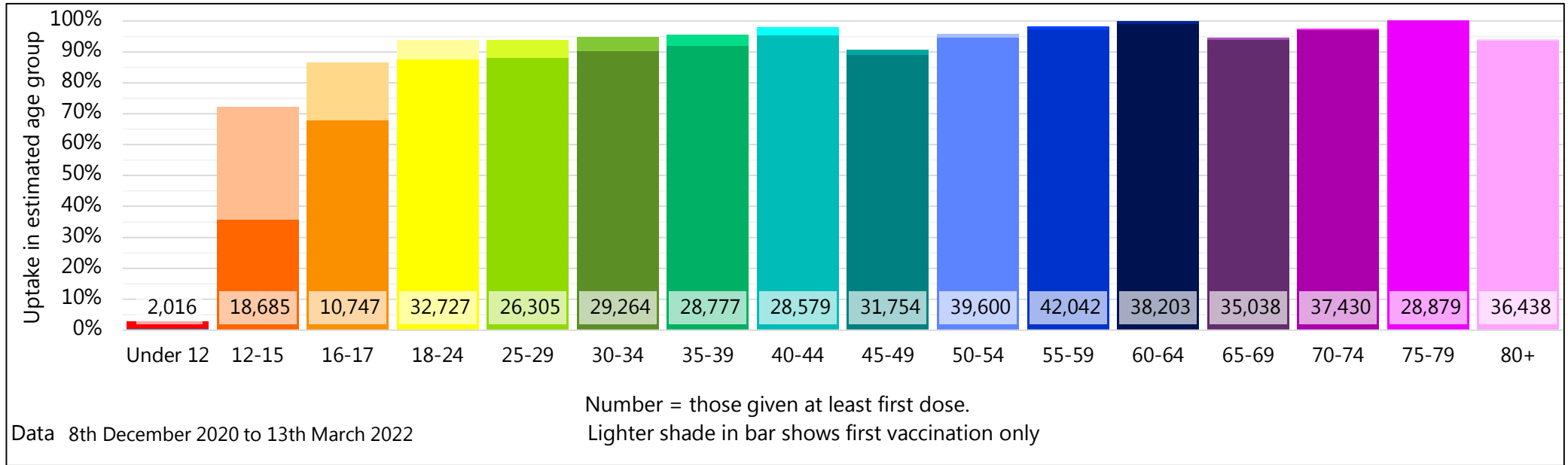


Somerset COVID-19 Local Outbreak Management Plan Dashboard - COVID Vaccinations

This page will be further developed once there is more routinely available data published nationally.

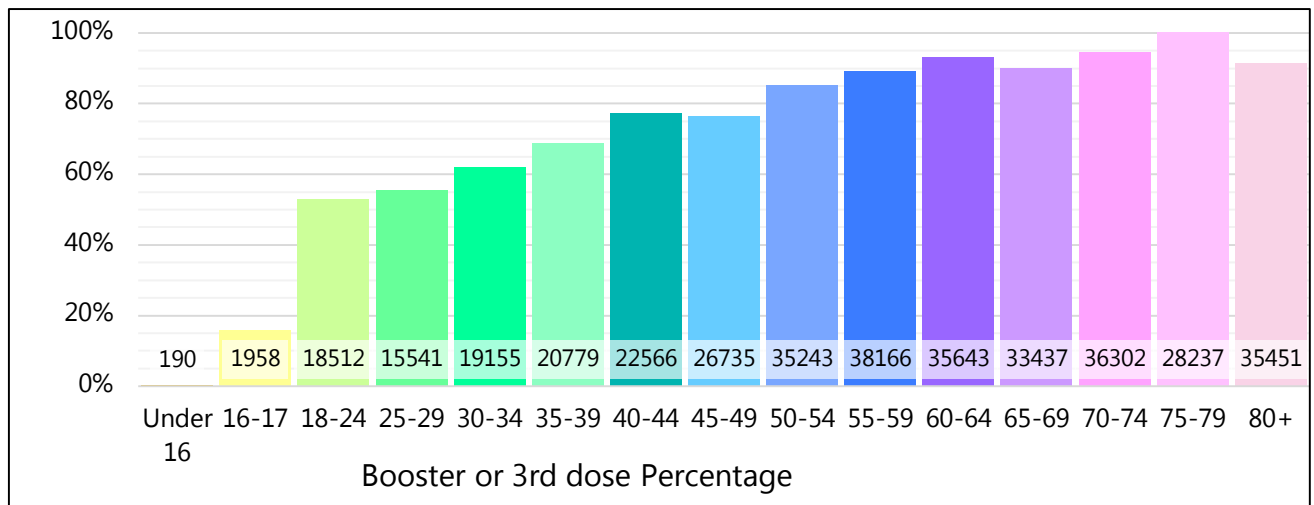
This vaccination data is NHS data, reported here with the agreement of the Somerset Clinical Commissioning Group. Specific queries regarding vaccination need to be directed towards the NHS. For more information on the local COVID-19 Vaccination Programme please see

[Covid-19 vaccinations in Somerset - Somerset CCG](#)



Population based on ONS 2020 estimates hence potential for uptake over 100%

Percentage 18+ population vaccinated once = 96.1%
 Percentage 18+ population vaccinated twice = 94.0%
 Percentage population vaccinated three times = 65.3%



Somerset COVID-19 Local Outbreak Management Plan Dashboard - Data

Data type	Next updated	How published	Link for more information
Lab confirmed cases: Pillars 1 & 2	23/03/2022	Published daily ~5pm with data to day before. By specimen date.	https://coronavirus.data.gov.uk/
Data by MSOA for the map	23/03/2022	Published daily. By specimen date.	None. Not publicly distributed. Data based on PHE reported cases. To note, this may differ slightly from data on the coronavirus.data.gov.uk website due to additional data cleaning by PHE.
R value from SAGE group	25/03/2022	Published weekly on Friday.	https://www.gov.uk/guidance/the-r-number-in-the-uk
Pillar 2 testing	29/03/2022	Published daily	https://coronavirus.data.gov.uk/
Death counts (ONS) County and district level	29/03/2022	Published weekly on Tuesday with data to the Friday 11 days before.	https://www.ons.gov.uk/peoplepopulationandcommunity/healthandsocialcare/causesofdeath/datasets/deathregistrationsandoccurrencesbylocalauthorityandhealthboard
Vaccination data	24/03/2022	Published weekly on Thursday with data to Sunday before.	https://www.england.nhs.uk/statistics/statistical-work-areas/covid-19-vaccinations/
Hospital Activity	24/03/2022	Published weekly on Thursday with data to Tuesday before.	https://www.england.nhs.uk/statistics/statistical-work-areas/covid-19-hospital-activity/

As of 2nd June 2020, numbers of lab-confirmed positive cases now include those identified by testing in all settings (pillars 1 and 2).

In January 2021, we changed the presentation of deaths data to be shown compared to the average and five year high and low deaths by date of occurrence rather than date of reporting. Deaths by date of reporting fluctuates more, especially when affected by bank holidays. Reporting by date of death does mean the latest week's figures are usually slightly incomplete when first reported due to delays in registrations of some deaths whereas the comparison years are more complete. For week 53 we have taken an average of 52 and week 1 comparison years.

Dashboard available at: <https://www.somerset.gov.uk/covid-19-dashboard/>