

Detected cases



Latest 7 day rate per 100k

26-Dec to 01-Jan



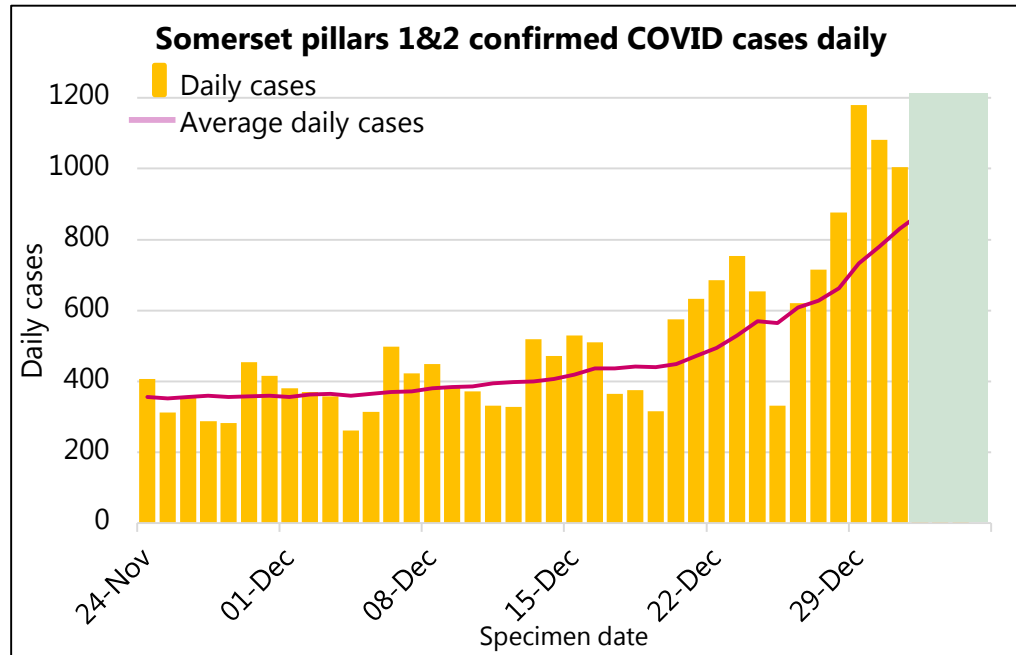
Outbreaks and Clusters



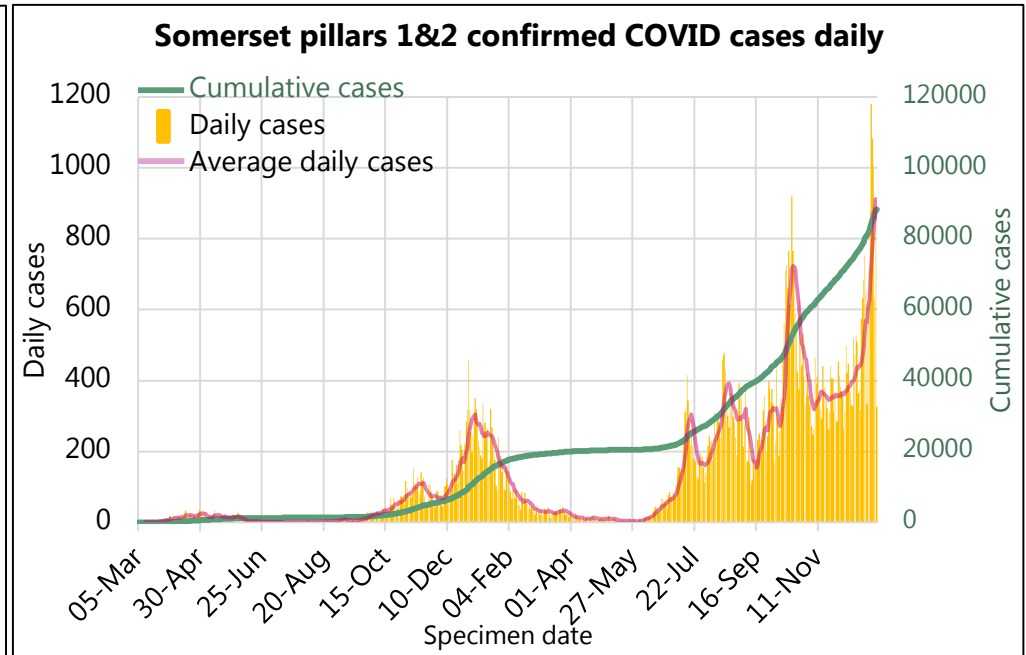
This represents the number of outbreaks and clusters currently being managed. Outbreaks are any situation with two or more cases, where at least two cases are known to be related to each other. Clusters are any incidents being managed at the same setting with two or more cases but where there is no established link between any of the cases.



Most recent days of cases



Overall profile of the epidemic in Somerset



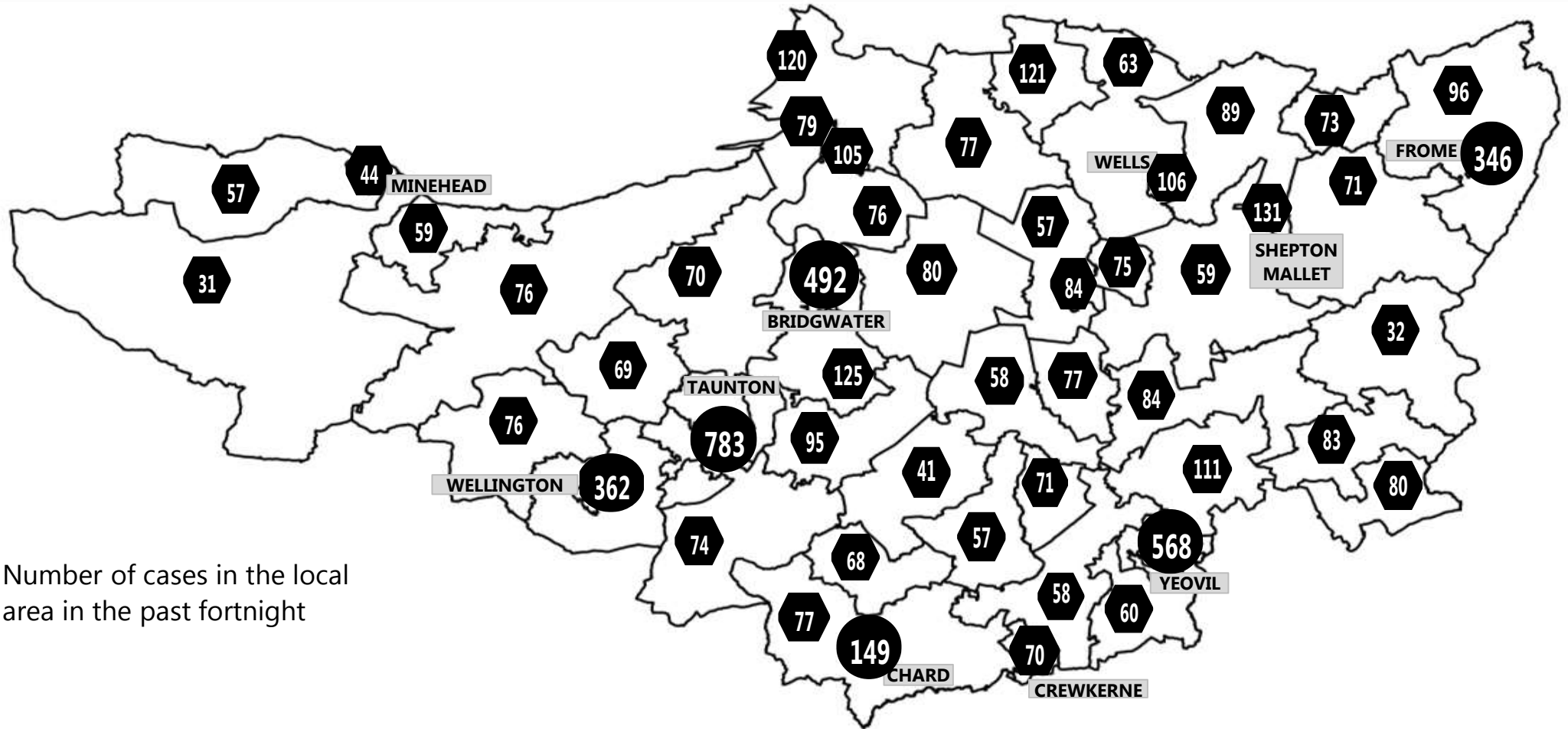
Somerset COVID-19 Local Outbreak Management Plan Dashboard - Cases

Weekly cases (excludes most recent three days with incompletely reported results)

District	05-Dec to 11-Dec	7 day rate per 100k	12-Dec to 18-Dec	7 day rate per 100k	19-Dec to 25-Dec	7 day rate per 100k	26-Dec to 01-Jan	7 day rate per 100k
Mendip	737	637.6	782	676.5	999	864.3	1251	1082.3
Sedgemoor	638	517.9	741	601.6	821	666.5	1346	1092.7
Som W & Taun.	520	335.2	649	418.4	1057	681.4	1734	1117.9
Sth Somerset	870	516.8	926	550.1	1070	635.6	1778	1056.2
Somerset	2765	491.8	3098	551.0	3947	702.0	6109	1086.6



Somerset COVID-19 Local Outbreak Management Plan Dashboard - Cases Map

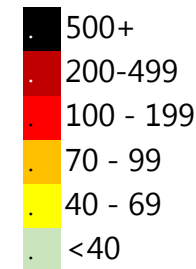


Number of cases in the local area in the past fortnight

Date range 26-Dec to 01-Jan

The numbers in this map show the current cases in the past 7 days, the colour of the tag shows the equivalent rate of positive cases per 100,000 population over a 7 day period. Case numbers in Taunton, Wellington, Chard, Yeovil, Bridgwater and Frome have been combined across the urban area with rates based on the combined area population.

Weekly rate per 100k



Somerset COVID-19 Local Outbreak Management Plan Dashboard - Wider Context

Latest R number range for the South West

0.9 to 1.1

Last updated on Thursday 23 Dec 2021

Produced by:

UK Government Scientific Advisory Group for Emergencies (SAGE)

What is R?

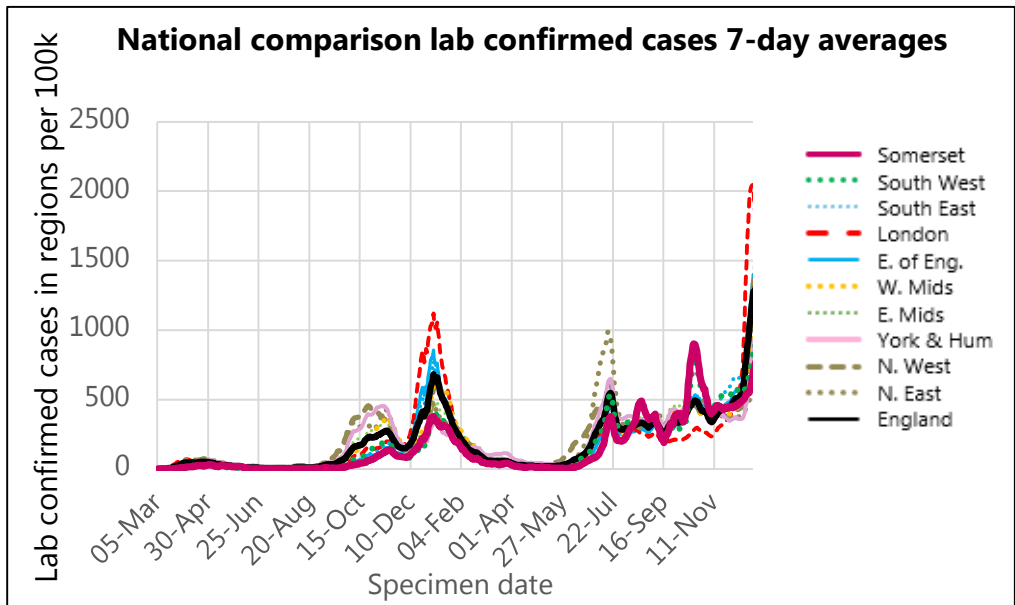
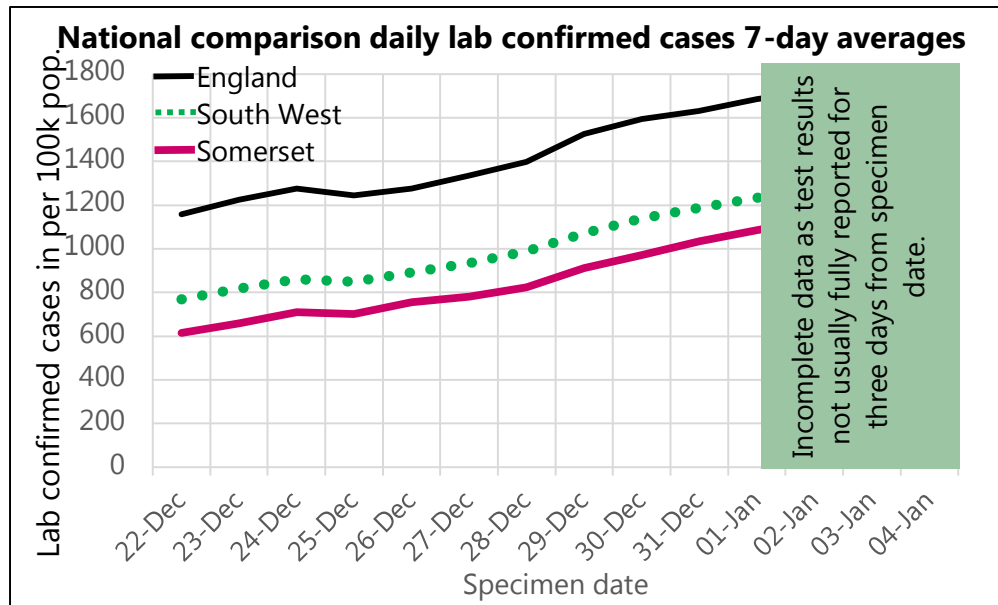
The reproduction number (R) is the average number of secondary infections produced by 1 infected person.

An R number of 1 means that on average every person who is infected will infect 1 other person, meaning the total number of new infections is stable.

Region

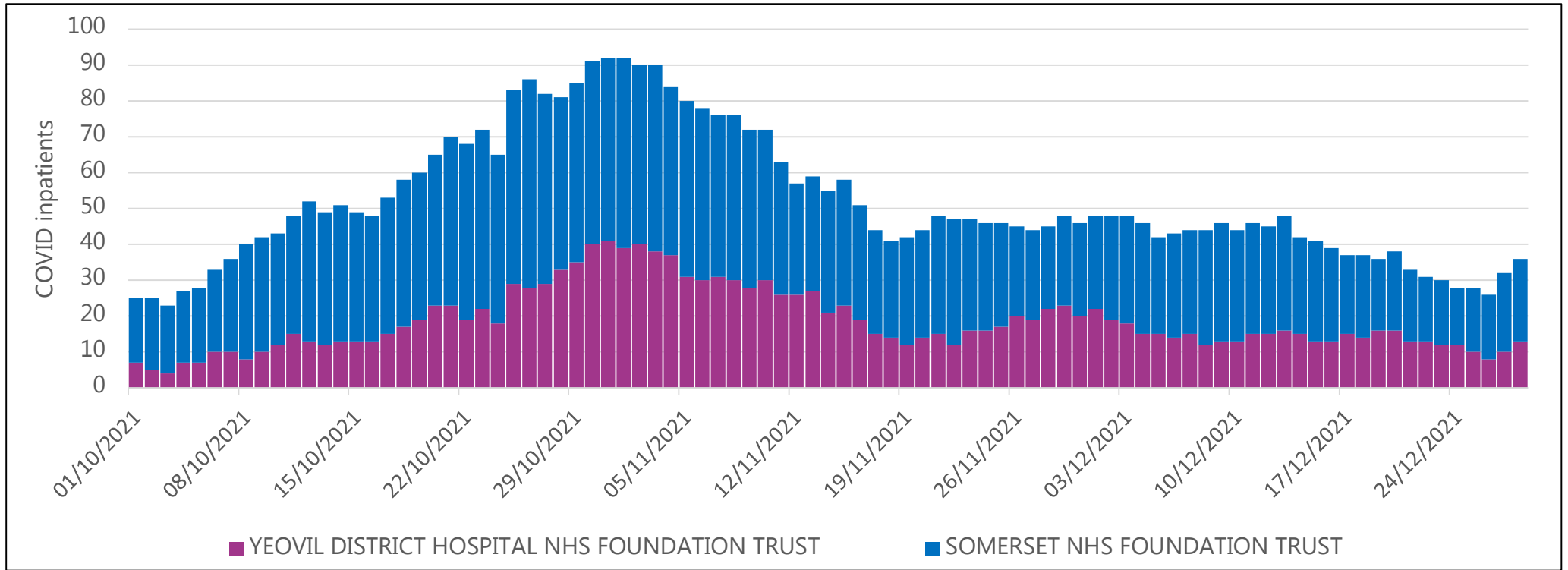
R

Region	R
UK	No longer produced
England	1.0 to 1.2
East of England	1.0 to 1.2
London	1.2 to 1.6
Midlands	1.0 to 1.1
NE and Yorks	0.9 to 1.1
North West	1.0 to 1.2
South East	0.9 to 1.1
South West	0.9 to 1.1



Somerset COVID-19 Local Outbreak Management Plan Dashboard - Hospital Activity

All COVID patients in Somerset Hospitals



Somerset COVID-19 Local Outbreak Management Plan Dashboard - Deaths

COVID deaths week ending

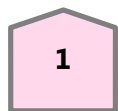
📅 17/12/2021

All COVID

Hospital



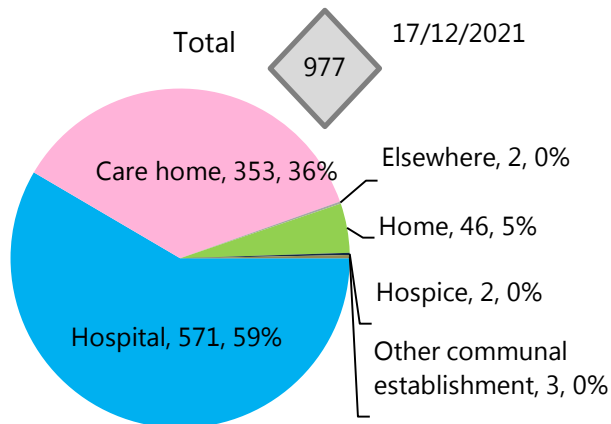
Care Home



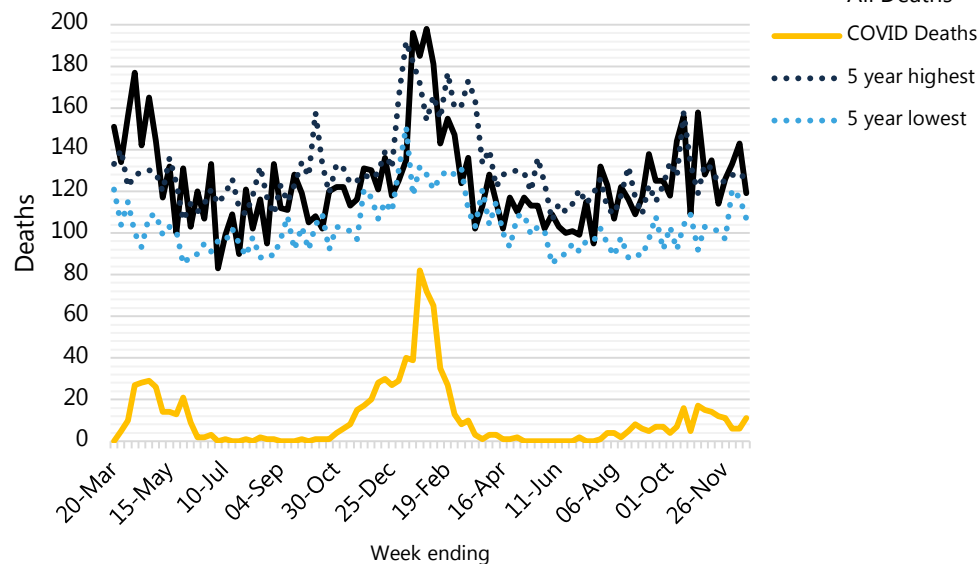
Other



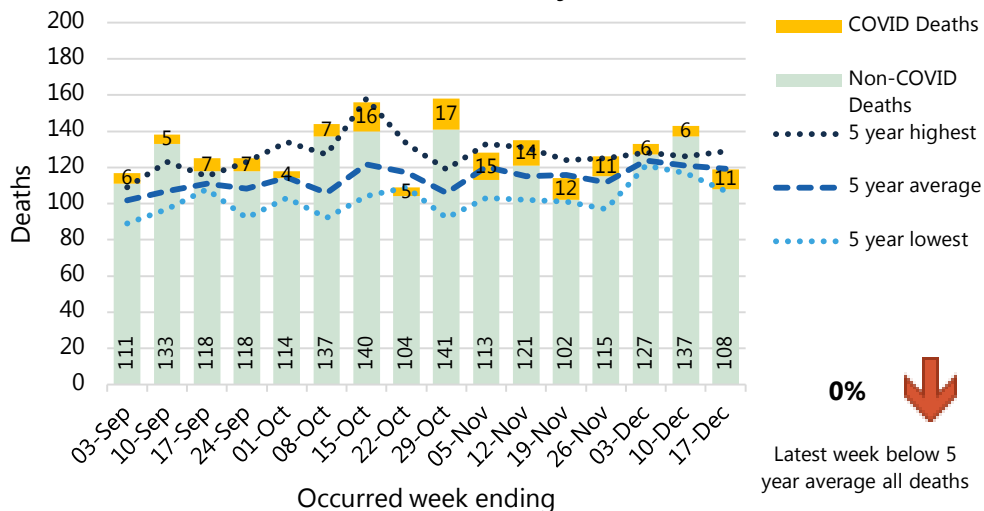
All COVID Deaths since the start of the pandemic in Somerset by Place of Death (ONS)



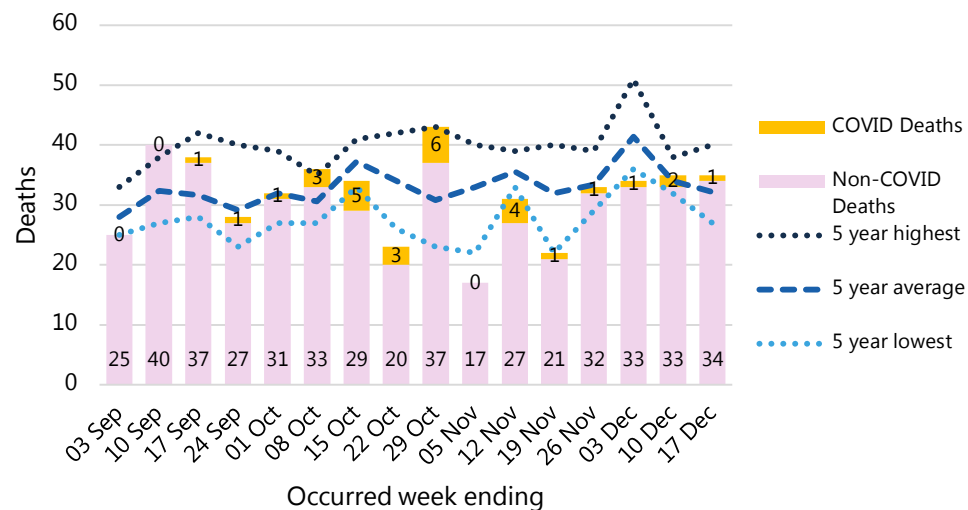
Somerset All Deaths (weekly) (ONS)



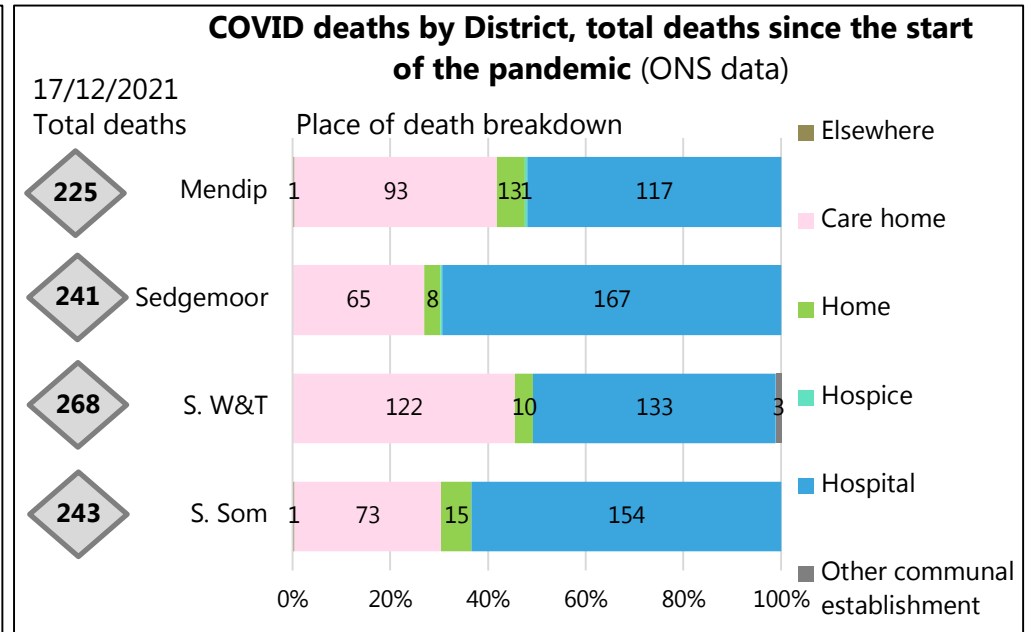
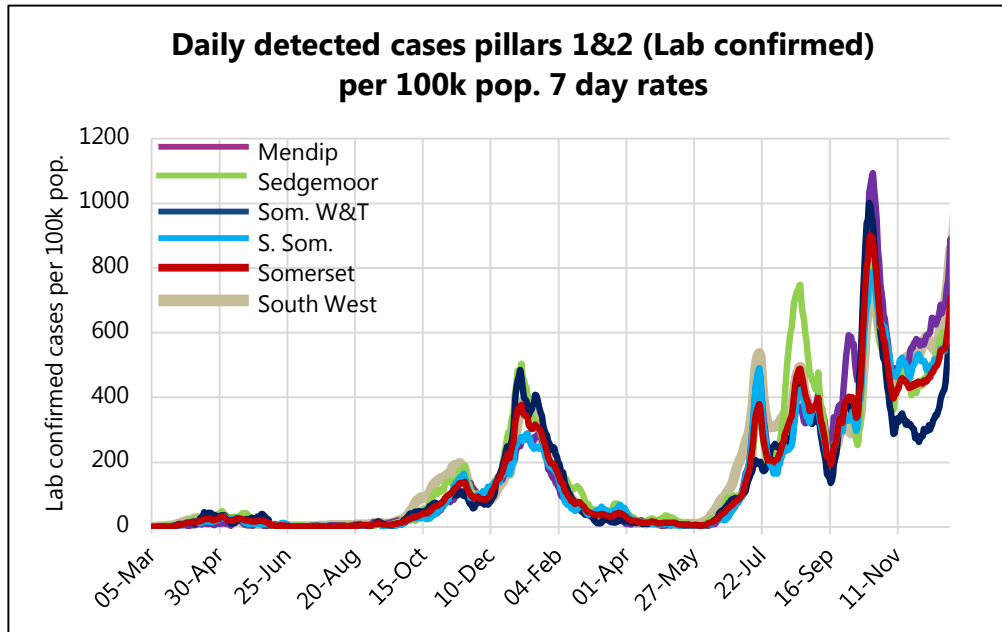
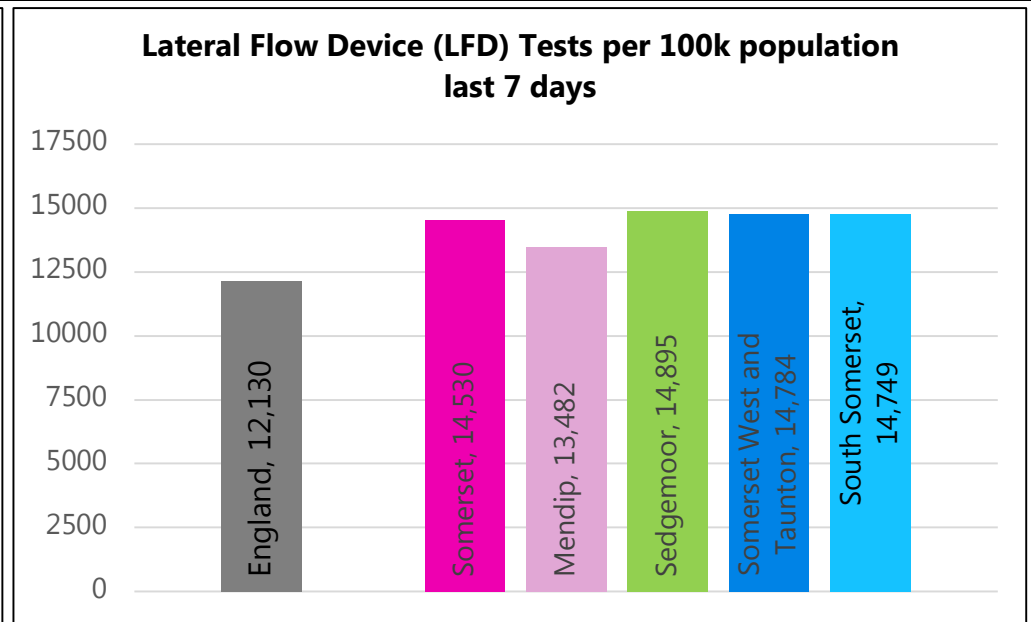
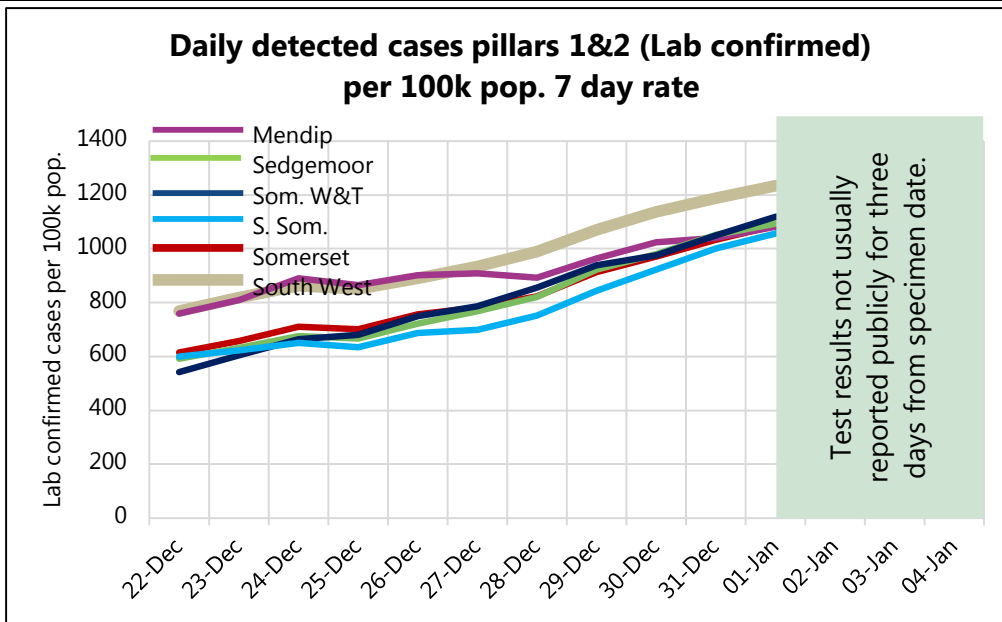
Somerset All Deaths (weekly) (ONS)



Somerset Care Home Deaths (weekly) (ONS)



Somerset COVID-19 Local Outbreak Management Plan Dashboard - District focus

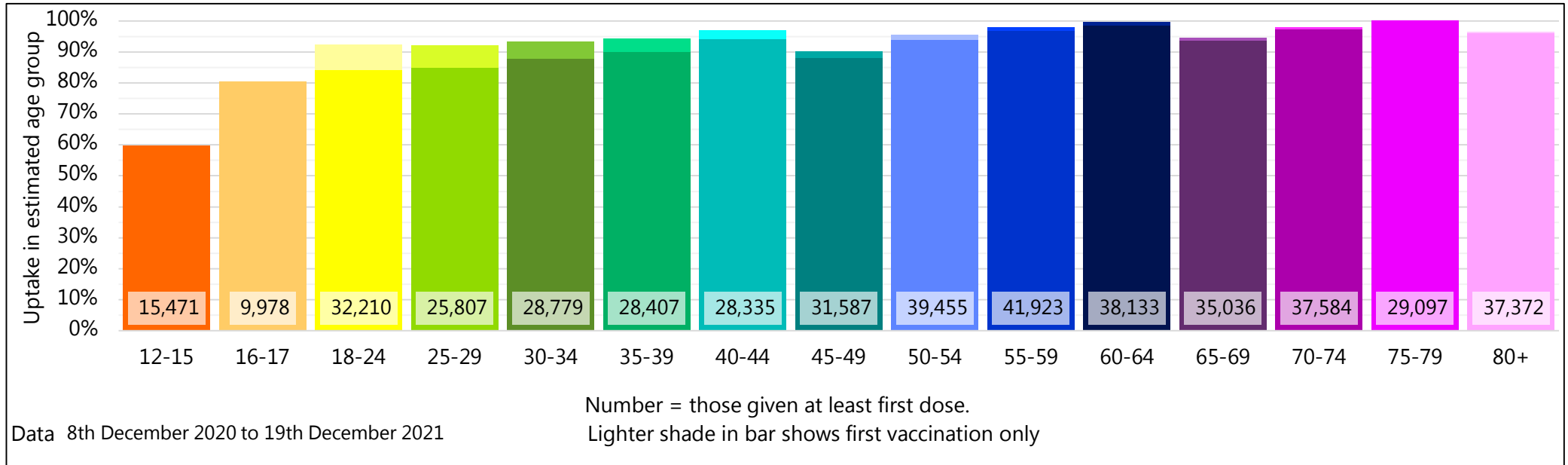


Somerset COVID-19 Local Outbreak Management Plan Dashboard - COVID Vaccinations

This page will be further developed once there is more routinely available data published nationally.

This vaccination data is NHS data, reported here with the agreement of the Somerset Clinical Commissioning Group. Specific queries regarding vaccination need to be directed towards the NHS. For more information on the local COVID-19 Vaccination Programme please see

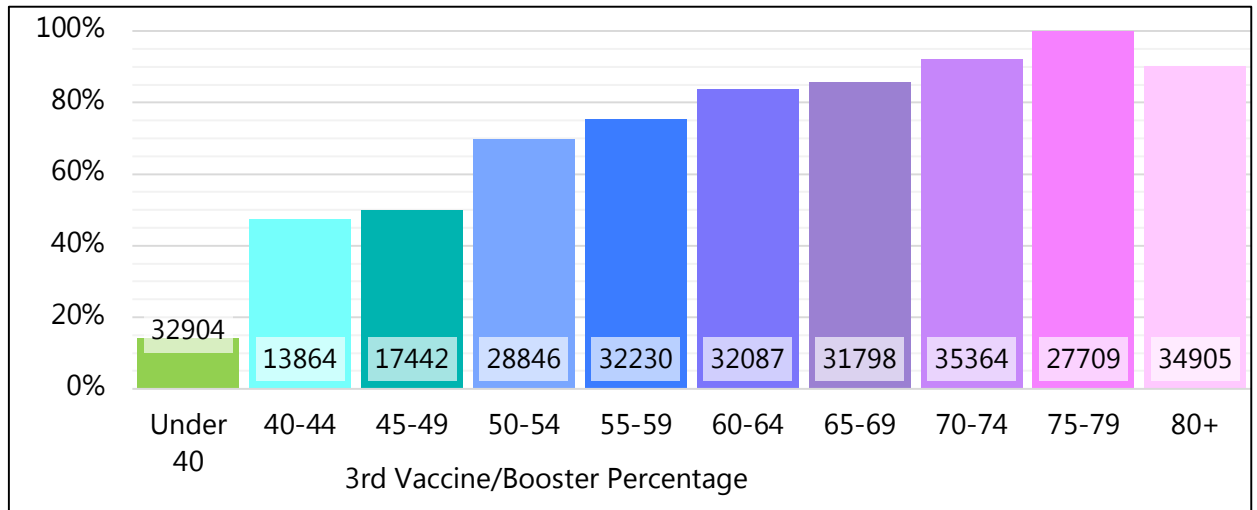
[Covid-19 vaccinations in Somerset - Somerset CCG](#)



Population based on ONS 2020 estimates hence potential for uptake over 100%

Percentage of 18+ population vaccinated once = 95.8%
 Percentage of 18+ population vaccinated twice = 93.2%
 Percentage of population vaccinated three times = 50.9%

Data for 12-15 year olds and 16-17 year olds is currently only being provided for the first dose.



Somerset COVID-19 Local Outbreak Management Plan Dashboard - Data

Data type	Next updated	How published	Link for more information
Lab confirmed cases: Pillars 1 & 2	05/01/2022	Published daily ~5pm with data to day before. By specimen date.	https://coronavirus.data.gov.uk/
Data by MSOA for the map	05/01/2022	Published daily. By specimen date.	None. Not publicly distributed. Data based on PHE reported cases. To note, this may differ slightly from data on the coronavirus.data.gov.uk website due to additional data cleaning by PHE.
R value from SAGE group	06/01/2022	Published weekly on Friday.	https://www.gov.uk/guidance/the-r-number-in-the-uk
Pillar 2 testing	05/01/2022	Published daily	https://coronavirus.data.gov.uk/
Death counts (ONS) County and district level	04/01/2022	Published weekly on Tuesday with data to the Friday 11 days before.	https://www.ons.gov.uk/peoplepopulationandcommunity/healthandsocialcare/causesofdeath/datasets/deathregistrationsandoccurrencesbylocalauthorityandhealthboard
Vaccination data	05/01/2022	Published weekly on Thursday with data to Sunday before.	https://www.england.nhs.uk/statistics/statistical-work-areas/covid-19-vaccinations/
Hospital Activity	05/01/2022	Published weekly on Thursday with data to Tuesday before.	https://www.england.nhs.uk/statistics/statistical-work-areas/covid-19-hospital-activity/

As of 2nd June 2020, numbers of lab-confirmed positive cases now include those identified by testing in all settings (pillars 1 and 2).

In January 2021, we changed the presentation of deaths data to be shown compared to the average and five year high and low deaths by date of occurrence rather than date of reporting. Deaths by date of reporting fluctuates more, especially when affected by bank holidays. Reporting by date of death does mean the latest week's figures are usually slightly incomplete when first reported due to delays in registrations of some deaths whereas the comparison years are more complete. For week 53 we have taken an average of 52 and week 1 comparison years.

Dashboard available at: <https://www.somerset.gov.uk/covid-19-dashboard/>