

Detected cases



Latest 7 day rate per 100k

07-Nov to 13-Nov



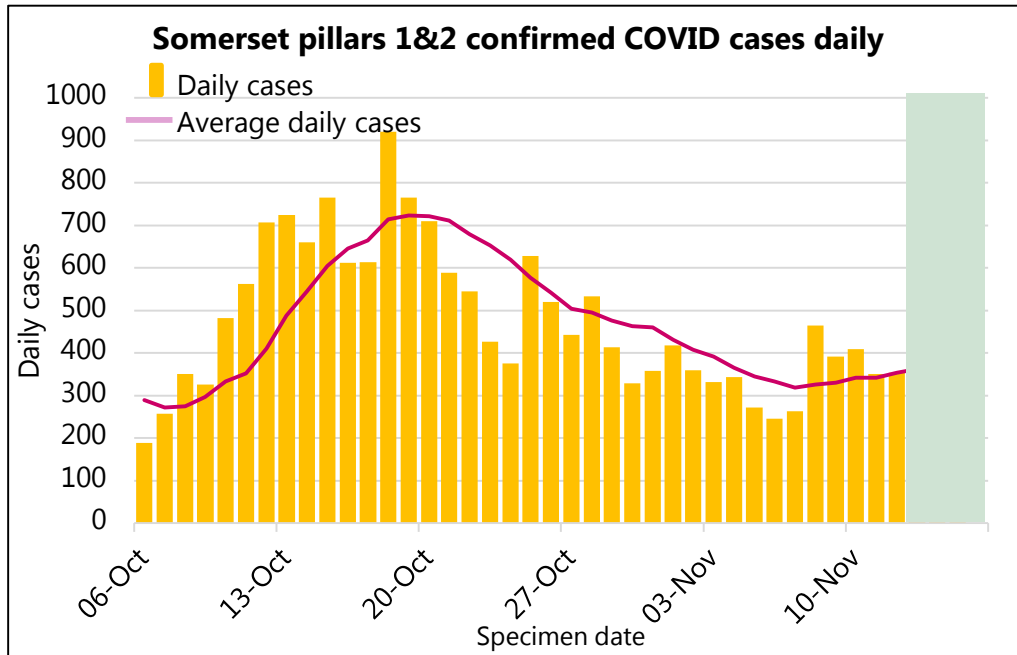
Outbreaks and Clusters



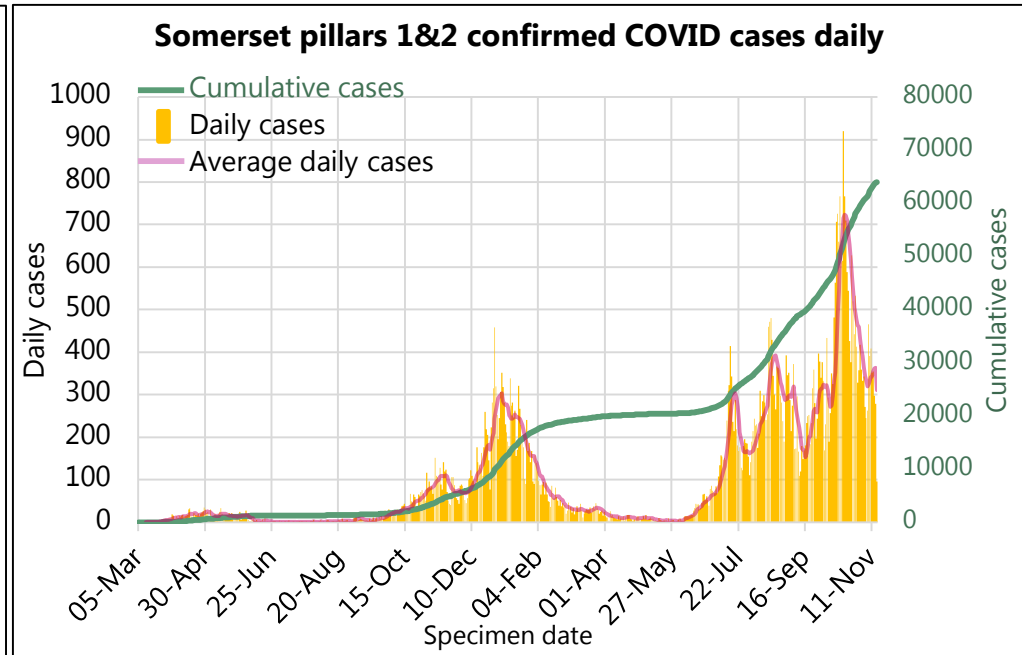
This represents the number of outbreaks and clusters currently being managed. Outbreaks are any situation with two or more cases, where at least two cases are known to be related to each other. Clusters are any incidents being managed at the same setting with two or more cases but where there is no established link between any of the cases.



Most recent days of cases



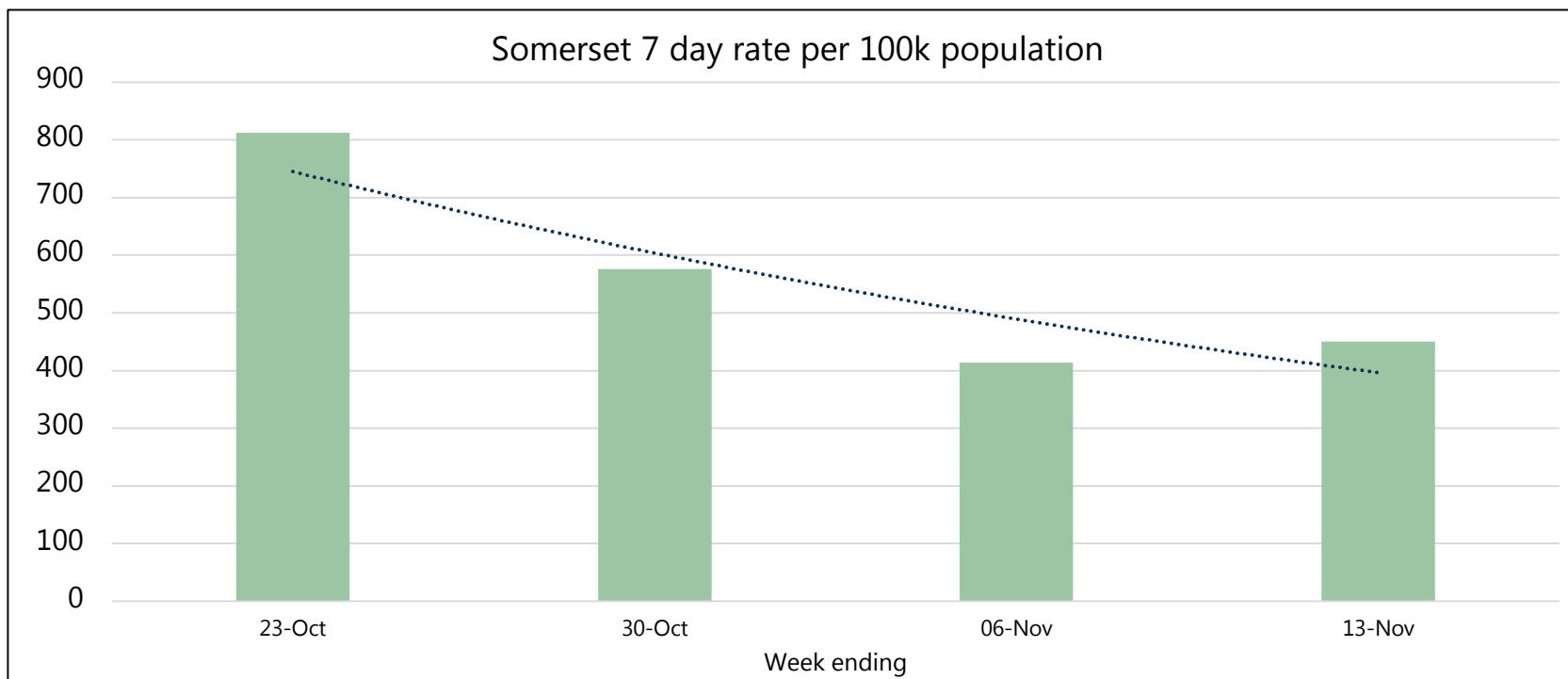
Overall profile of the epidemic in Somerset



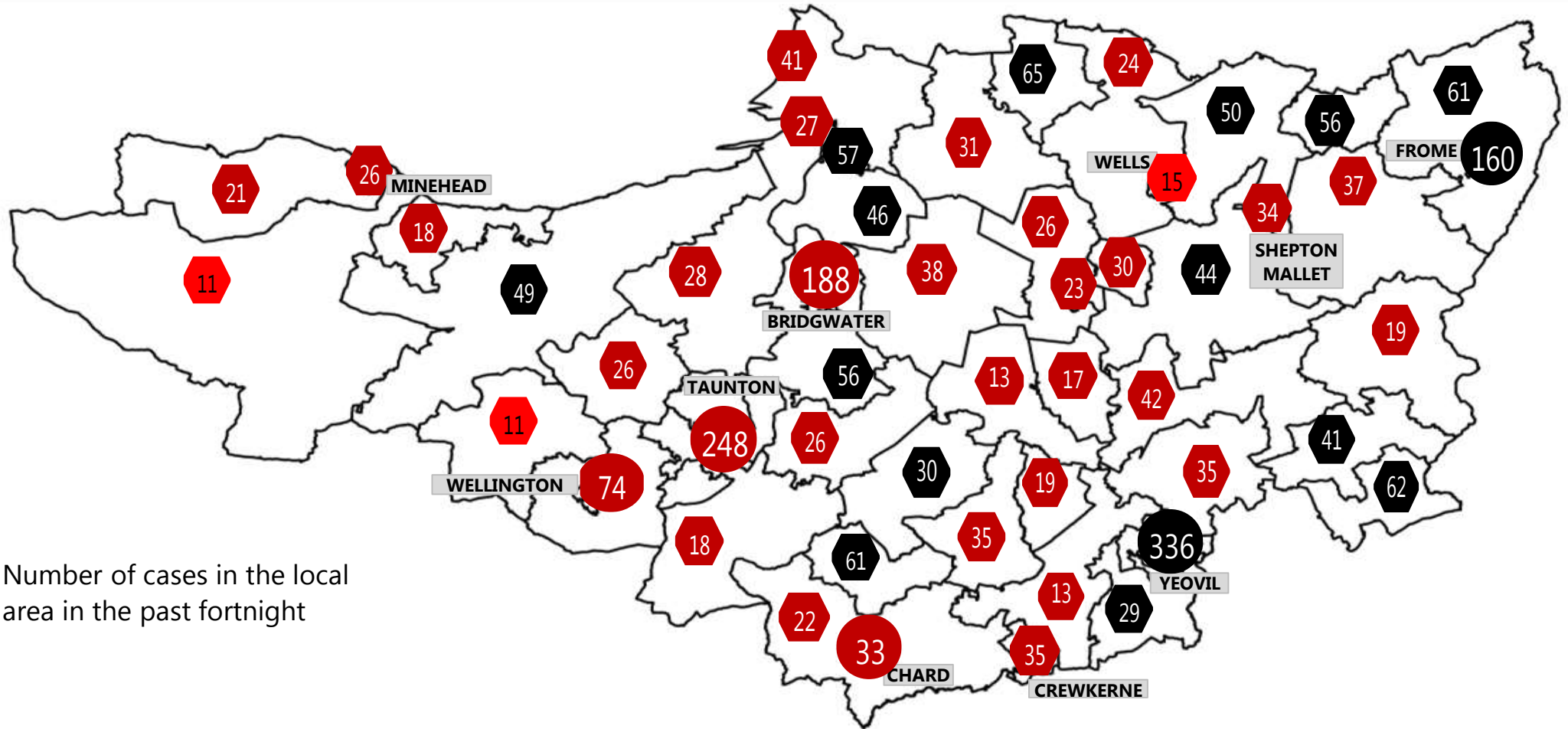
Somerset COVID-19 Local Outbreak Management Plan Dashboard - Cases

Weekly cases (excludes most recent three days with incompletely reported results)

District	17-Oct to 23-Oct	7 day rate per 100k	24-Oct to 30-Oct	7 day rate per 100k	31-Oct to 06-Nov	7 day rate per 100k	07-Nov to 13-Nov	7 day rate per 100k
Mendip	1159	1002.7	759	656.6	551	476.7	560	484.5
Sedgemoor	904	733.9	639	518.8	473	384.0	577	468.4
Som W & Taun.	1277	823.3	806	519.6	502	323.6	528	340.4
Sth Somerset	1229	730.0	1037	616.0	801	475.8	866	514.4
Somerset	4569	812.7	3241	576.5	2327	413.9	2531	450.2



Somerset COVID-19 Local Outbreak Management Plan Dashboard - Cases Map

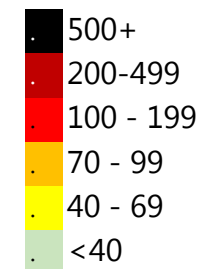


Number of cases in the local area in the past fortnight

Date range 07-Nov to 13-Nov

The numbers in this map show the current cases in the past 7 days, the colour of the tag shows the equivalent rate of positive cases per 100,000 population over a 7 day period. Case numbers in Taunton, Wellington, Chard, Yeovil, Bridgwater and Frome have been combined across the urban area with rates based on the combined area population.

Weekly rate per 100k



Somerset COVID-19 Local Outbreak Management Plan Dashboard - Wider Context

Latest R number range for the South West

0.7 to 1.0

Last updated on Friday 12 Nov 2021

Produced by:

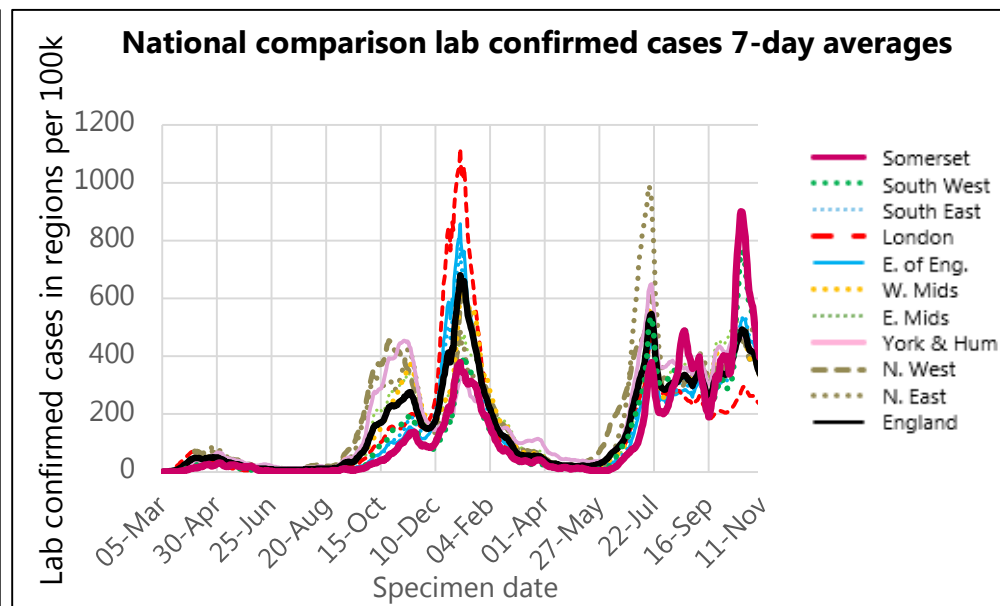
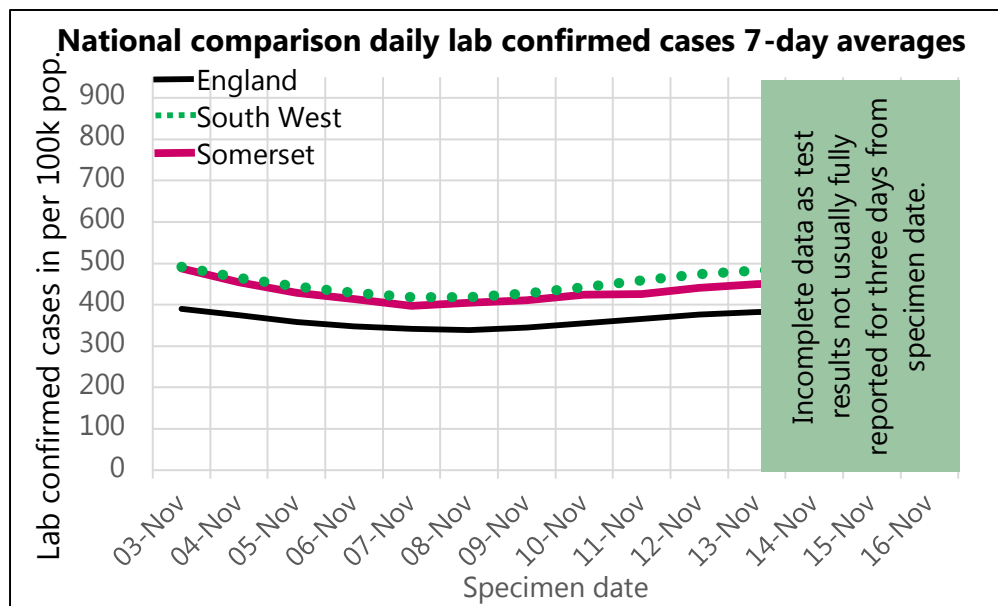
UK Government Scientific Advisory Group for Emergencies (SAGE)

What is R?

The reproduction number (R) is the average number of secondary infections produced by 1 infected person.

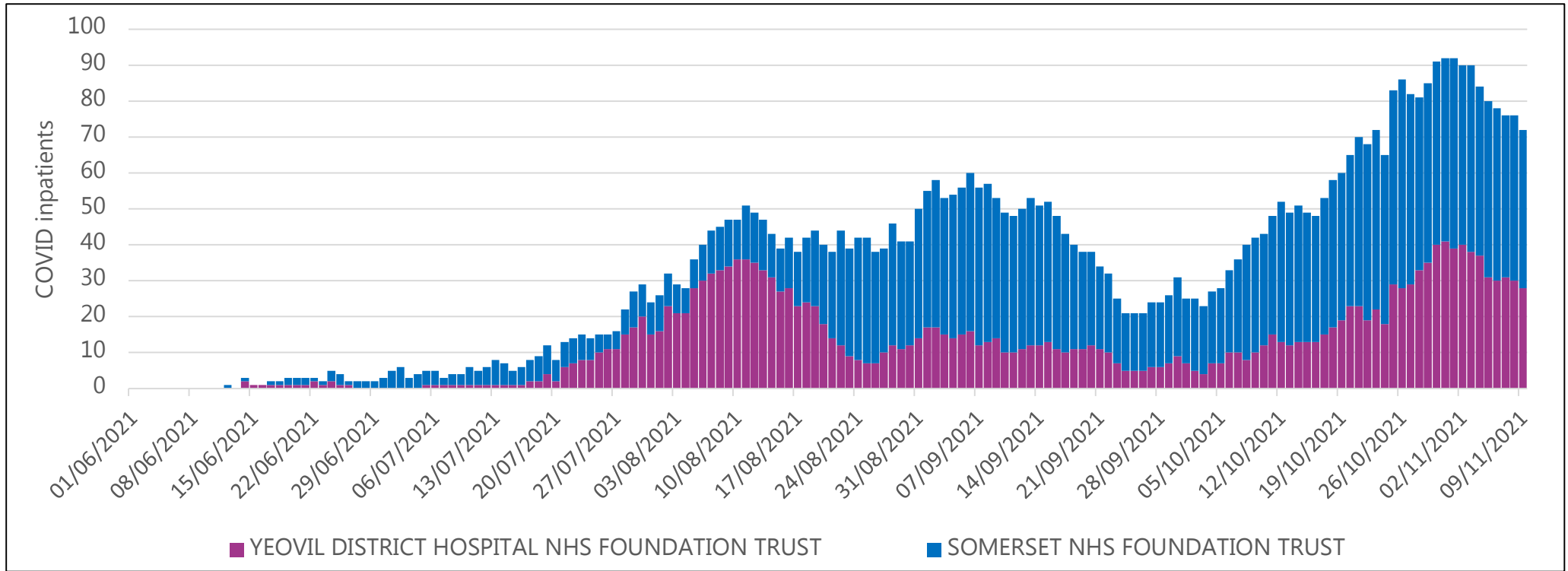
An R number of 1 means that on average every person who is infected will infect 1 other person, meaning the total number of new infections is stable.

Region	R
UK	No longer produced
England	0.8 to 1.0
East of England	0.8 to 1.0
London	0.8 to 1.0
Midlands	0.8 to 1.0
NE and Yorks	0.8 to 1.0
North West	0.8 to 1.0
South East	0.8 to 1.0
South West	0.7 to 1.0



Somerset COVID-19 Local Outbreak Management Plan Dashboard - Hospital Activity

All COVID patients in Somerset Hospitals



Somerset COVID-19 Local Outbreak Management Plan Dashboard - Deaths

COVID deaths week ending

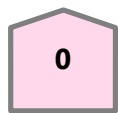
📅 05/11/2021

All COVID

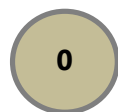
Hospital



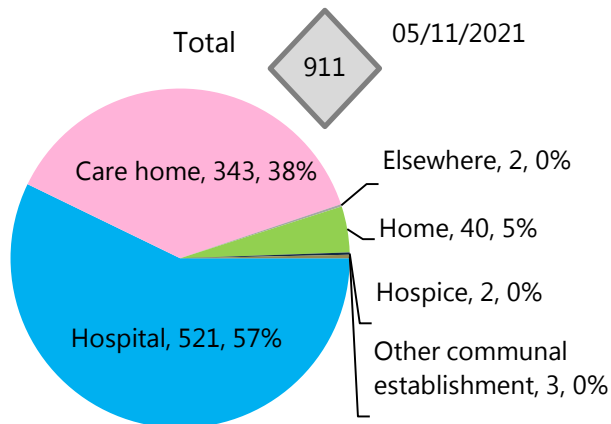
Care Home



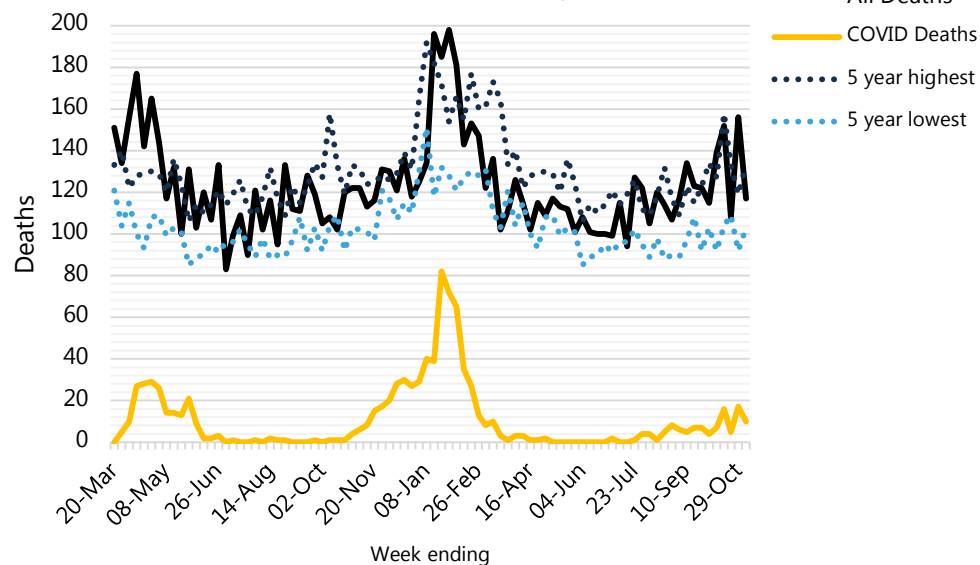
Other



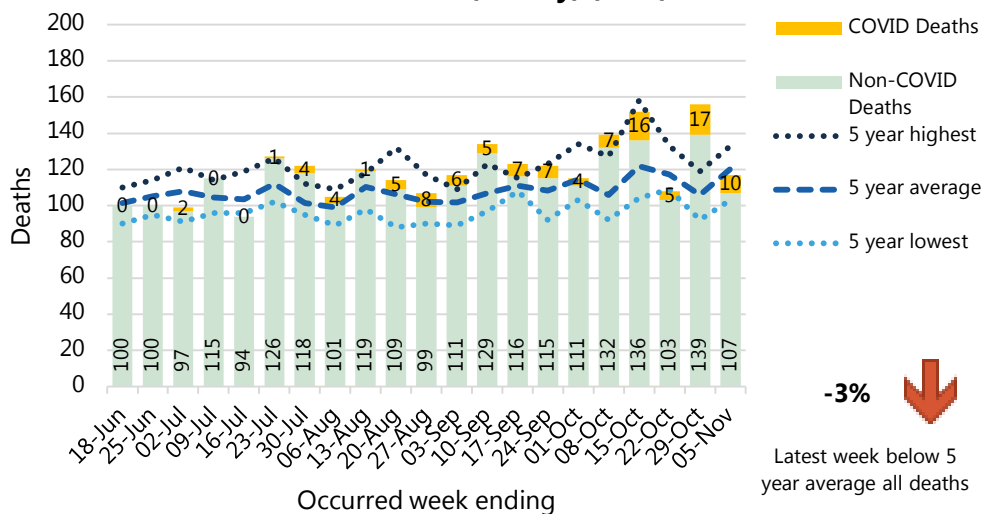
All COVID Deaths since the start of the pandemic in Somerset by Place of Death (ONS)



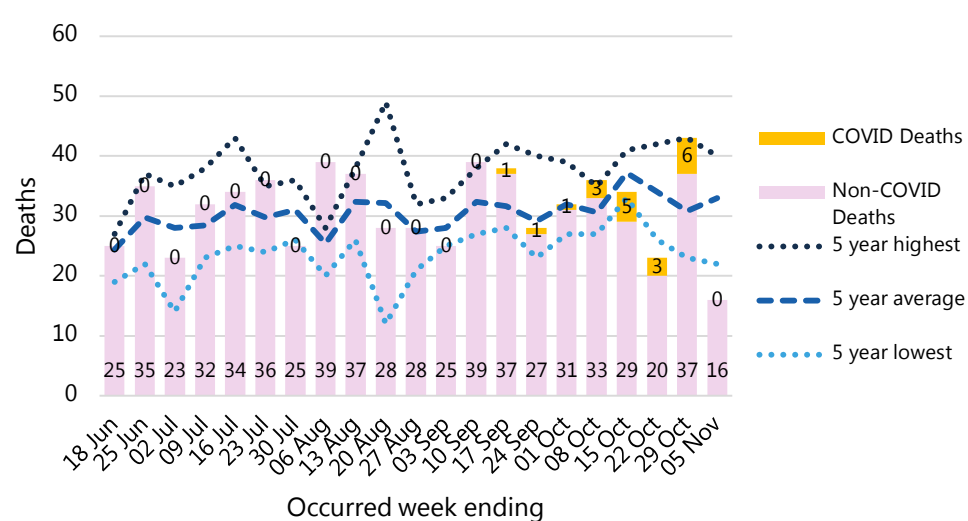
Somerset All Deaths (weekly) (ONS)



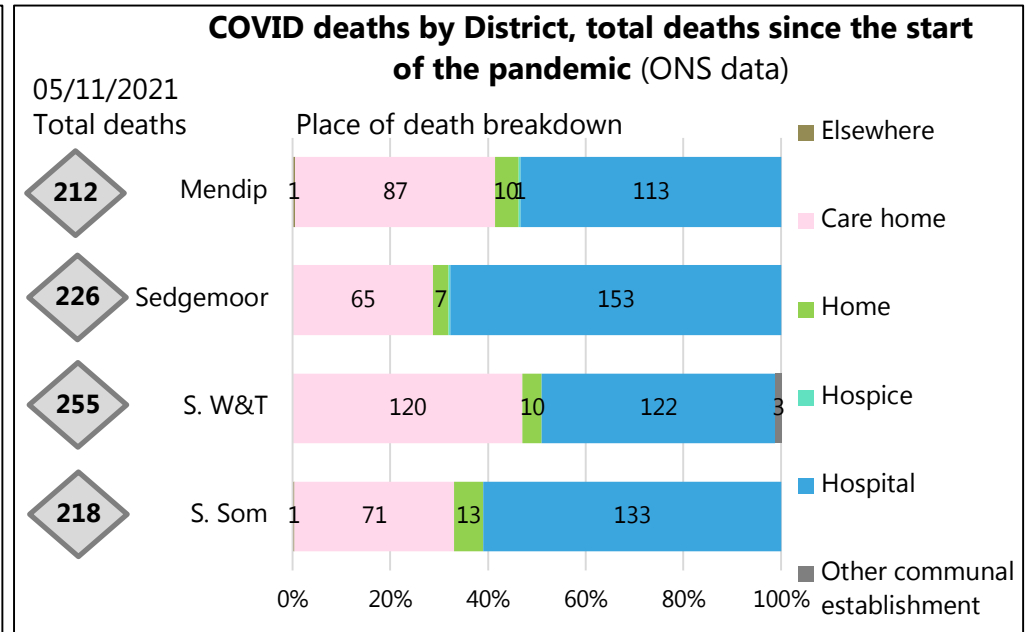
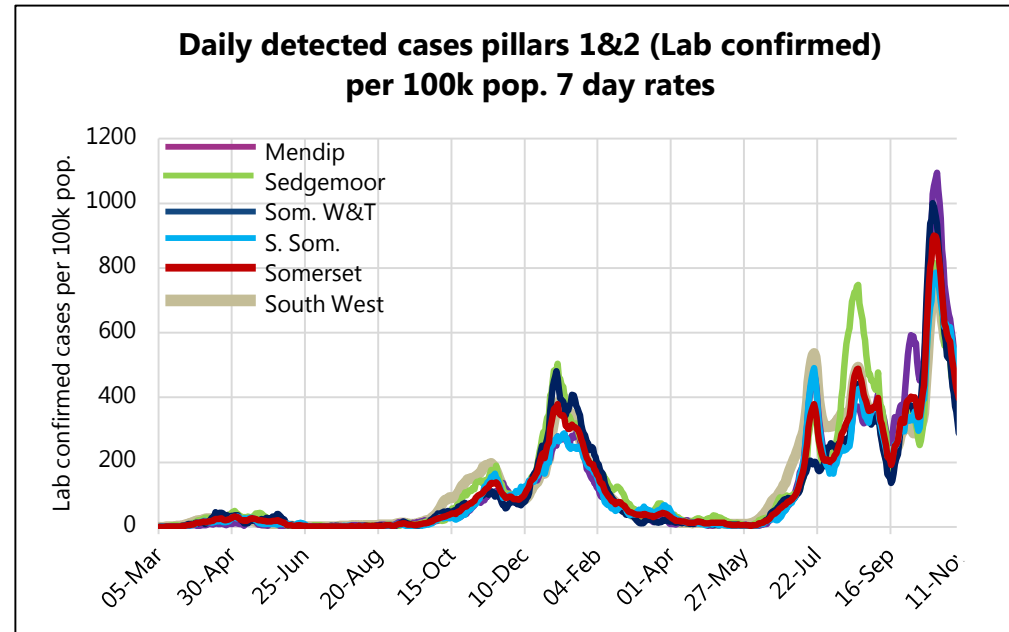
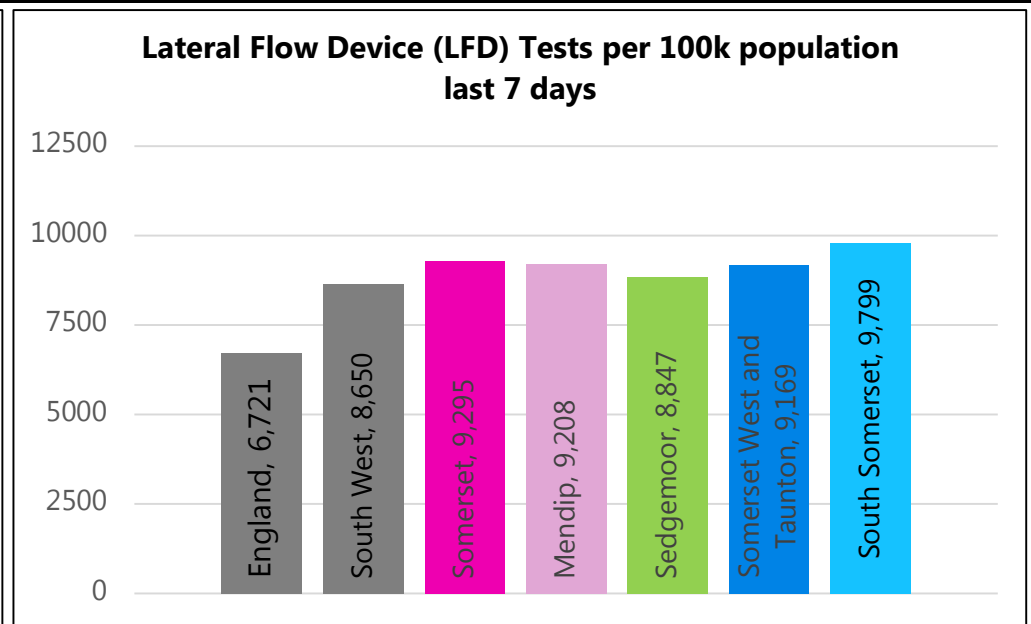
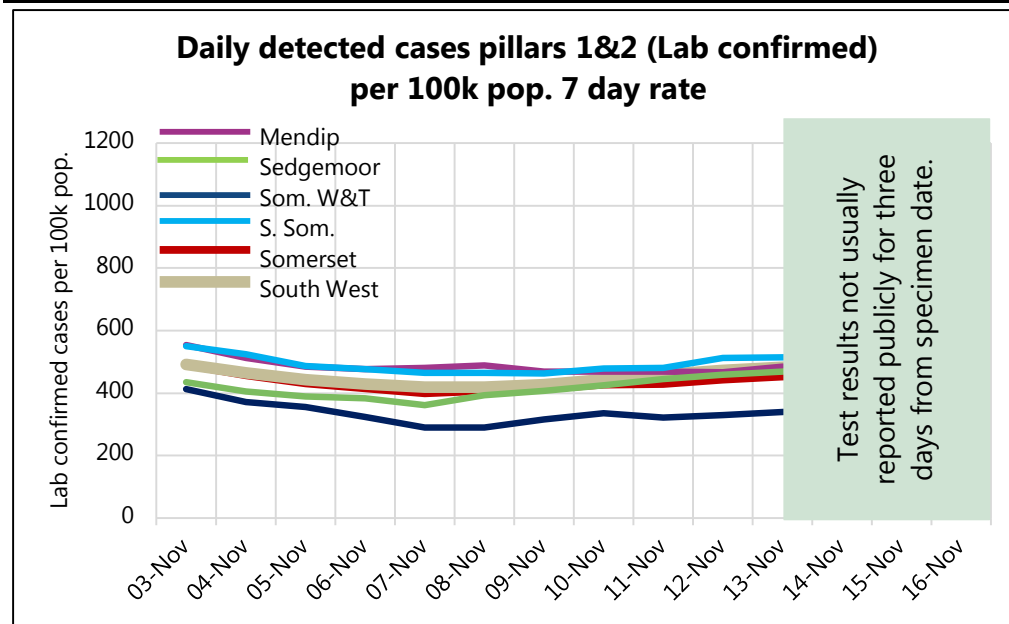
Somerset All Deaths (weekly) (ONS)



Somerset Care Home Deaths (weekly) (ONS)



Somerset COVID-19 Local Outbreak Management Plan Dashboard - District focus

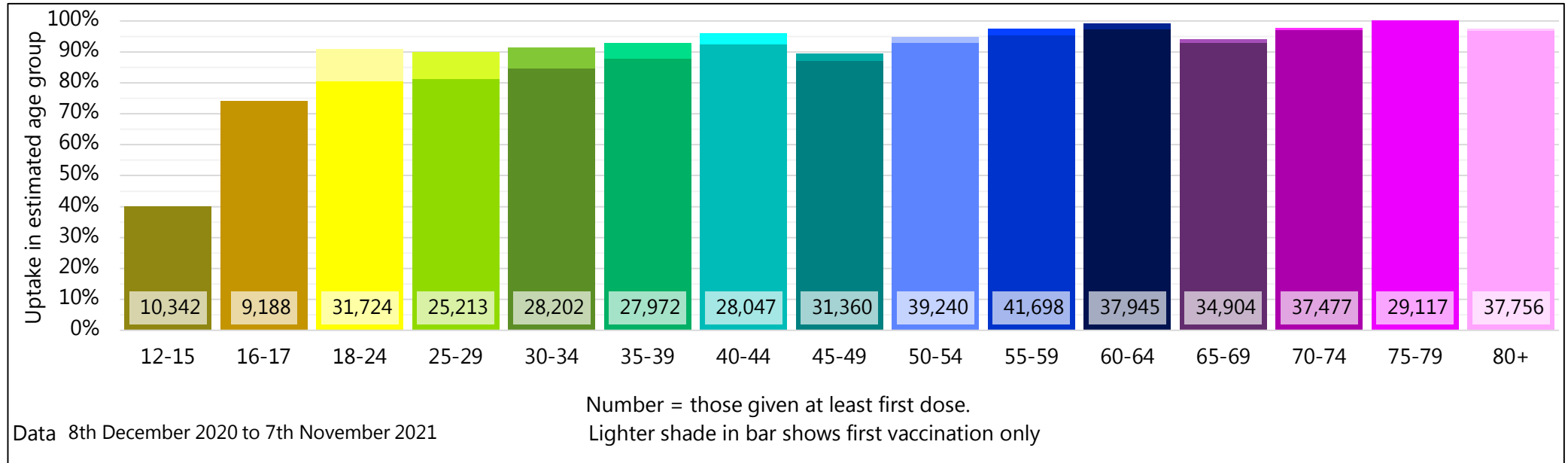


Somerset COVID-19 Local Outbreak Management Plan Dashboard - COVID Vaccinations

This page will be further developed once there is more routinely available data published nationally.

This vaccination data is NHS data, reported here with the agreement of the Somerset Clinical Commissioning Group. Specific queries regarding vaccination need to be directed towards the NHS. For more information on the local COVID-19 Vaccination Programme please see

[Covid-19 vaccinations in Somerset - Somerset CCG](#)



Population numbers are based on ONS 2020 estimates hence potential for uptake over 100%.

Percentage of 18+ population vaccinated at least once = 95.2%

Percentage of 18+ population vaccinated twice = 91.8%

Data for 12-15 year olds and 16-17 year olds is currently only being provided for the first dose.

Somerset COVID-19 Local Outbreak Management Plan Dashboard - Data

Data type	Next updated	How published	Link for more information
Lab confirmed cases: Pillars 1 & 2	17/11/2021	Published daily ~5pm with data to day before. By specimen date.	https://coronavirus.data.gov.uk/
Data by MSOA for the map	17/11/2021	Published daily. By specimen date.	None. Not publicly distributed. Data based on PHE reported cases. To note, this may differ slightly from data on the coronavirus.data.gov.uk website due to additional data cleaning by PHE.
R value from SAGE group	19/11/2021	Published weekly on Friday.	https://www.gov.uk/guidance/the-r-number-in-the-uk
Pillar 2 testing	17/11/2021	Published daily	https://coronavirus.data.gov.uk/
Death counts (ONS) County and district level	23/11/2021	Published weekly on Tuesday with data to the Friday 11 days before.	https://www.ons.gov.uk/peoplepopulationandcommunity/healthandsocialcare/causesofdeath/datasets/deathregistrationsandoccurrencesbylocalauthorityandhealthboard
Vaccination data	18/11/2021	Published weekly on Thursday with data to Sunday before.	https://www.england.nhs.uk/statistics/statistical-work-areas/covid-19-vaccinations/
Hospital Activity	18/11/2021	Published weekly on Thursday with data to Tuesday before.	https://www.england.nhs.uk/statistics/statistical-work-areas/covid-19-hospital-activity/

As of 2nd June 2020, numbers of lab-confirmed positive cases now include those identified by testing in all settings (pillars 1 and 2).

In January 2021, we changed the presentation of deaths data to be shown compared to the average and five year high and low deaths by date of occurrence rather than date of reporting. Deaths by date of reporting fluctuates more, especially when affected by bank holidays. Reporting by date of death does mean the latest week's figures are usually slightly incomplete when first reported due to delays in registrations of some deaths whereas the comparison years are more complete. For week 53 we have taken an average of 52 and week 1 comparison years.

Dashboard available at: <https://www.somerset.gov.uk/covid-19-dashboard/>