

Detected cases



Latest 7 day rate per 100k

31-Oct to 06-Nov



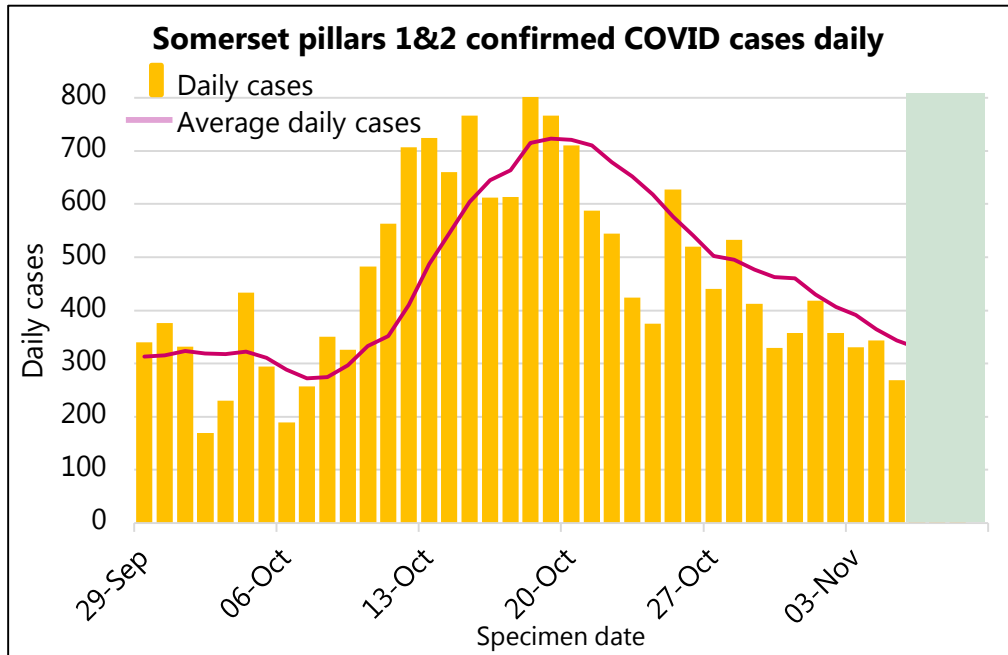
Outbreaks and Clusters



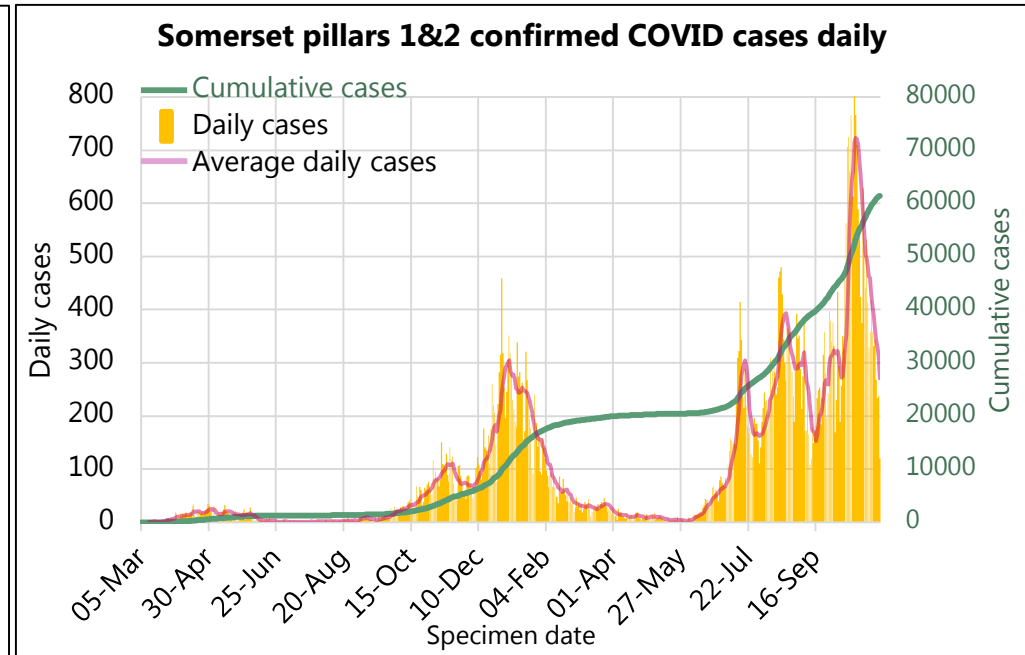
This represents the number of outbreaks and clusters currently being managed. Outbreaks are any situation with two or more cases, where at least two cases are known to be related to each other. Clusters are any incidents being managed at the same setting with two or more cases but where there is no established link between any of the cases.



Most recent days of cases



Overall profile of the epidemic in Somerset



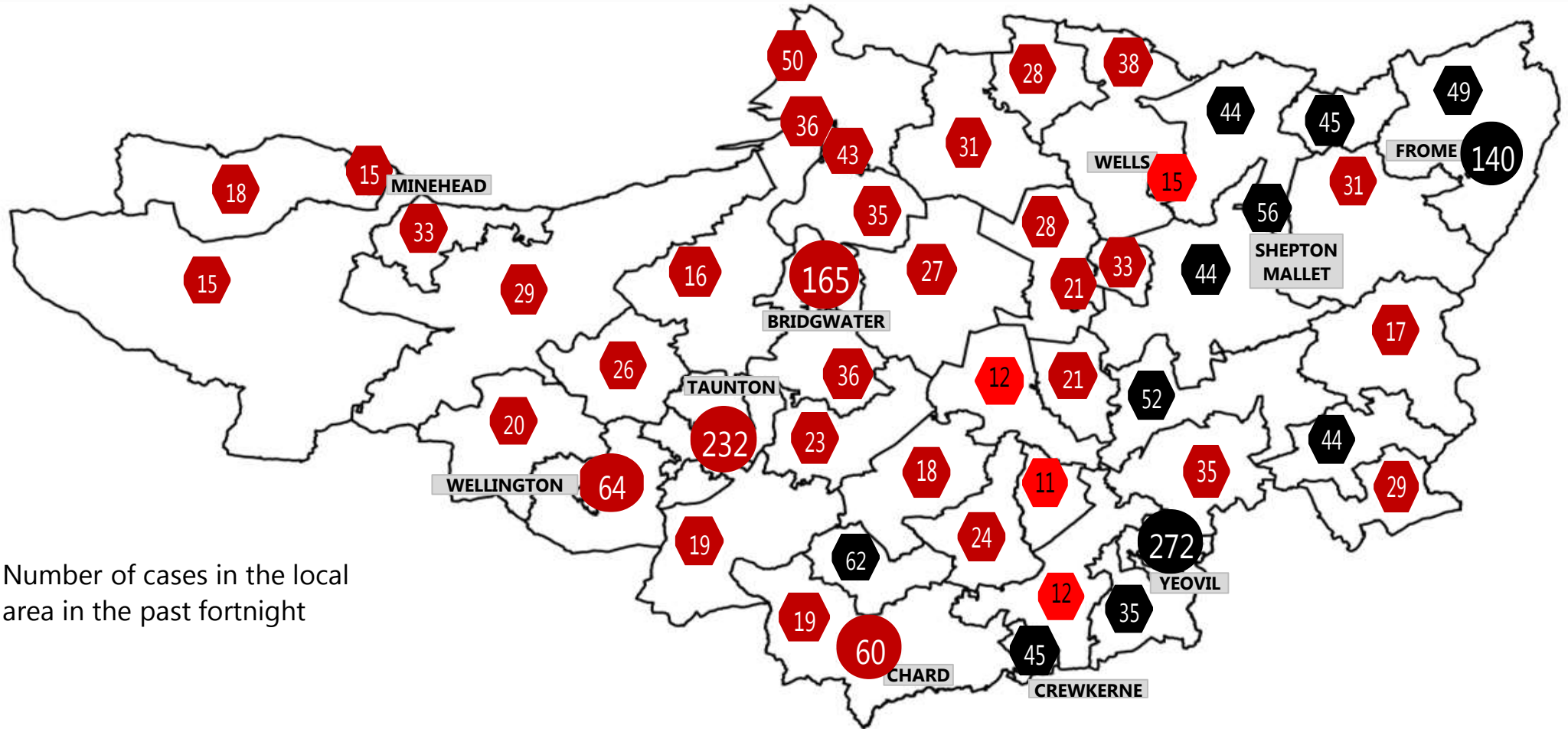
Somerset COVID-19 Local Outbreak Management Plan Dashboard - Cases

Weekly cases (excludes most recent three days with incompletely reported results)

District	10-Oct to 16-Oct	7 day rate per 100k	17-Oct to 23-Oct	7 day rate per 100k	24-Oct to 30-Oct	7 day rate per 100k	31-Oct to 06-Nov	7 day rate per 100k
Mendip	1014	877.3	1159	1002.7	759	656.6	550	475.8
Sedgemoor	903	733.1	902	732.3	639	518.8	469	380.7
Som W & Taun.	1456	938.7	1277	823.3	805	519.0	499	321.7
Sth Somerset	1142	678.4	1228	729.5	1036	615.4	792	470.5
Somerset	4515	803.1	4566	812.1	3239	576.1	2310	410.9



Somerset COVID-19 Local Outbreak Management Plan Dashboard - Cases Map

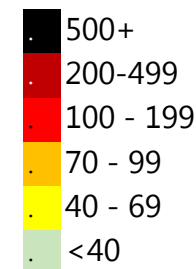


Number of cases in the local area in the past fortnight

Date range 31-Oct to 06-Nov

The numbers in this map show the current cases in the past 7 days, the colour of the tag shows the equivalent rate of positive cases per 100,000 population over a 7 day period. Case numbers in Taunton, Wellington, Chard, Yeovil, Bridgwater and Frome have been combined across the urban area with rates based on the combined area population.

Weekly rate per 100k



Somerset COVID-19 Local Outbreak Management Plan Dashboard - Wider Context

Latest R number range for the South West

0.9 to 1.2

Last updated on Friday 05 Nov 2021

Produced by:

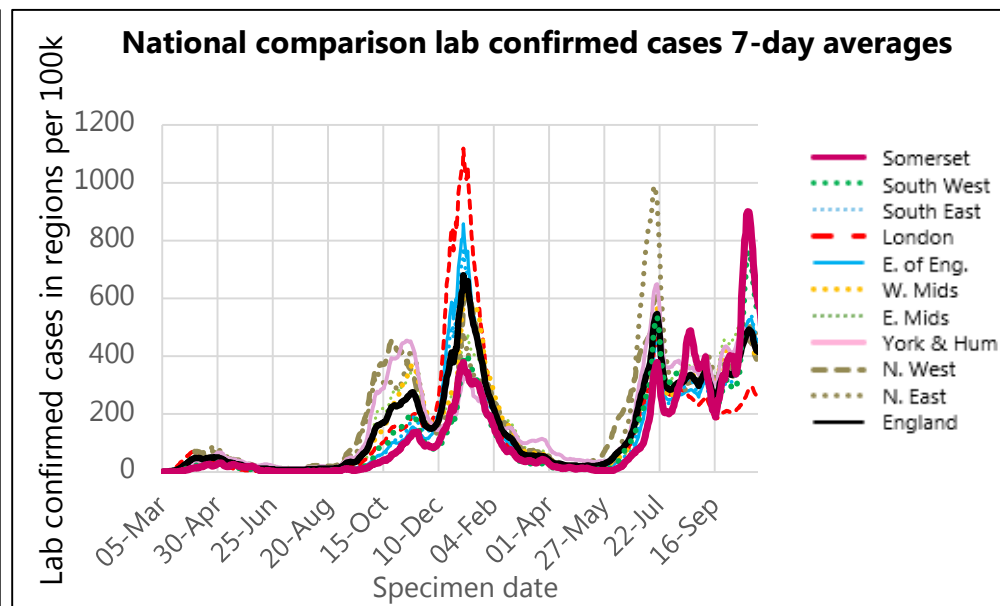
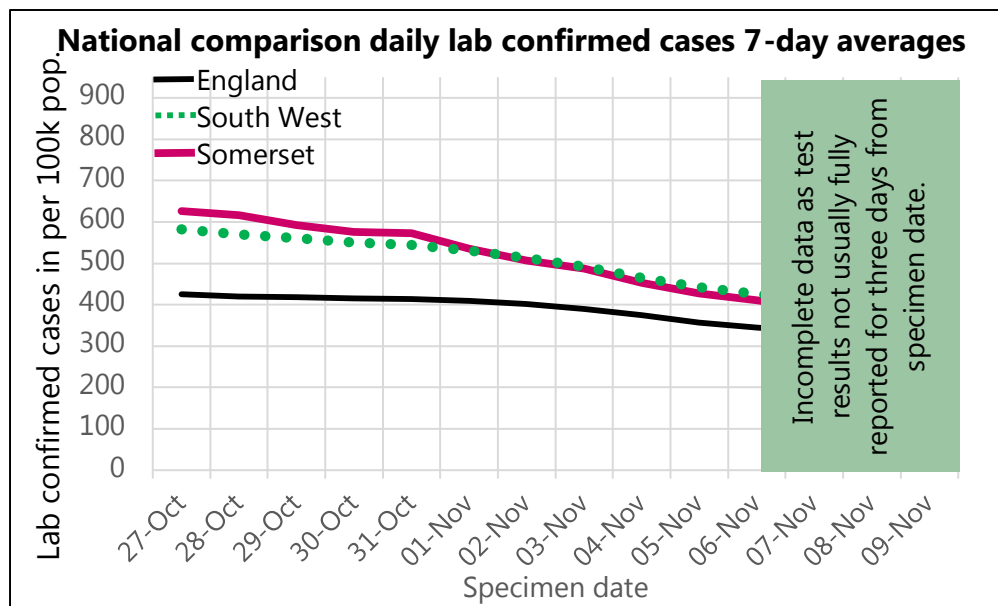
UK Government Scientific Advisory Group for Emergencies (SAGE)

What is R?

The reproduction number (R) is the average number of secondary infections produced by 1 infected person.

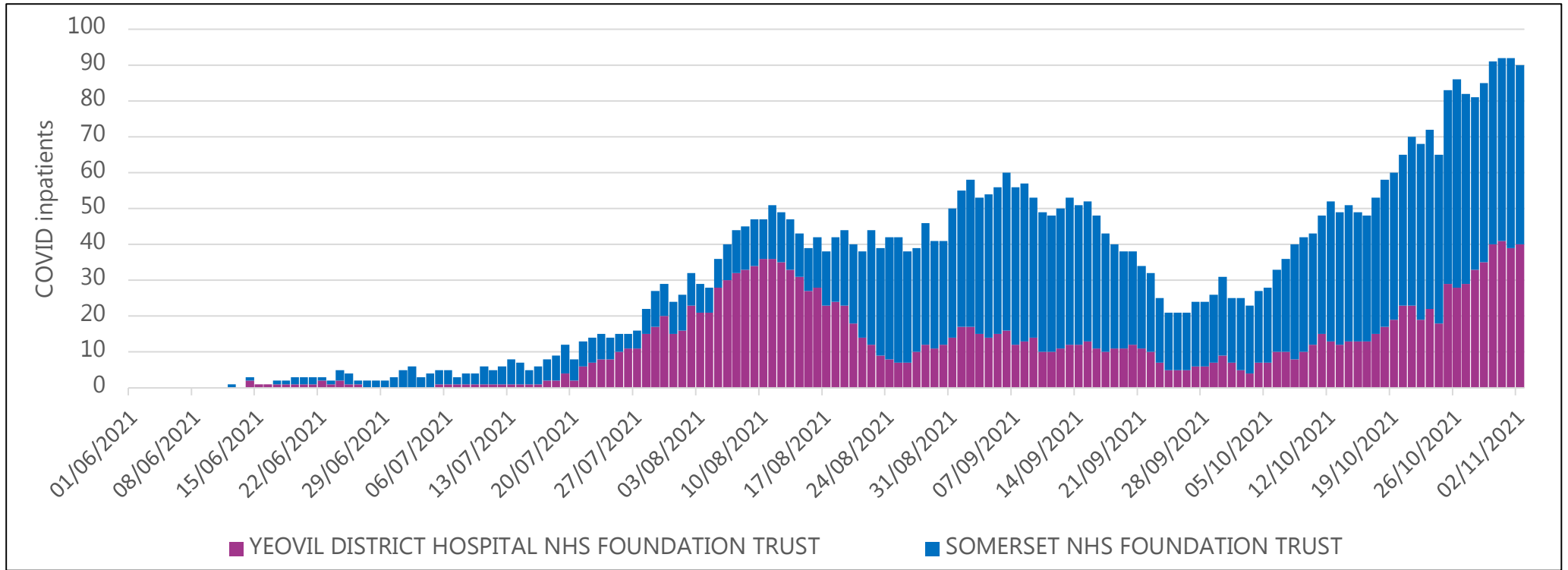
An R number of 1 means that on average every person who is infected will infect 1 other person, meaning the total number of new infections is stable.

Region	R
UK	No longer produced
England	0.9 to 1.1
East of England	0.9 to 1.2
London	1.0 to 1.2
Midlands	0.9 to 1.1
NE and Yorks	0.9 to 1.1
North West	0.9 to 1.1
South East	1.0 to 1.2
South West	0.9 to 1.2



Somerset COVID-19 Local Outbreak Management Plan Dashboard - Hospital Activity

All COVID patients in Somerset Hospitals



Somerset COVID-19 Local Outbreak Management Plan Dashboard - Deaths

COVID deaths week ending

📍 29/10/2021

All COVID

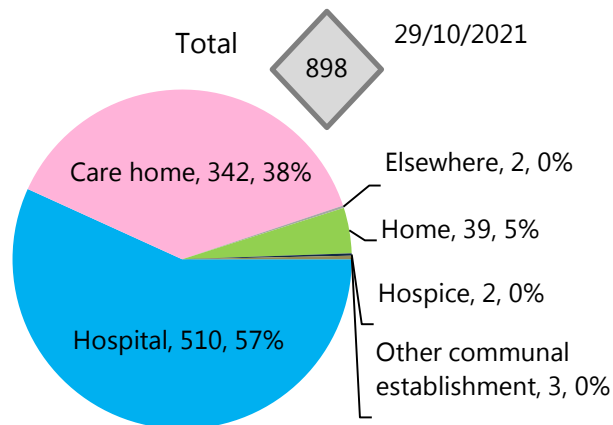
Hospital

Care Home

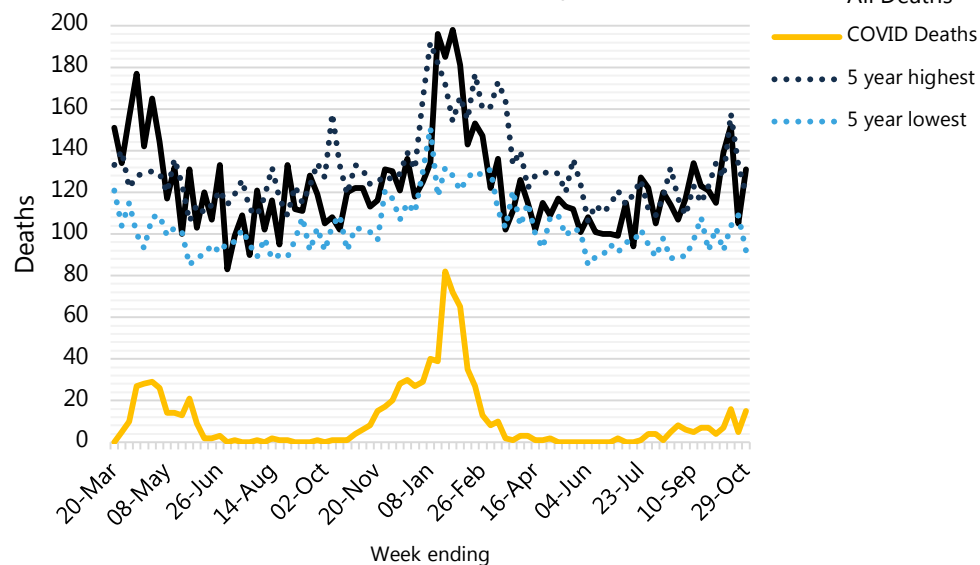
Other



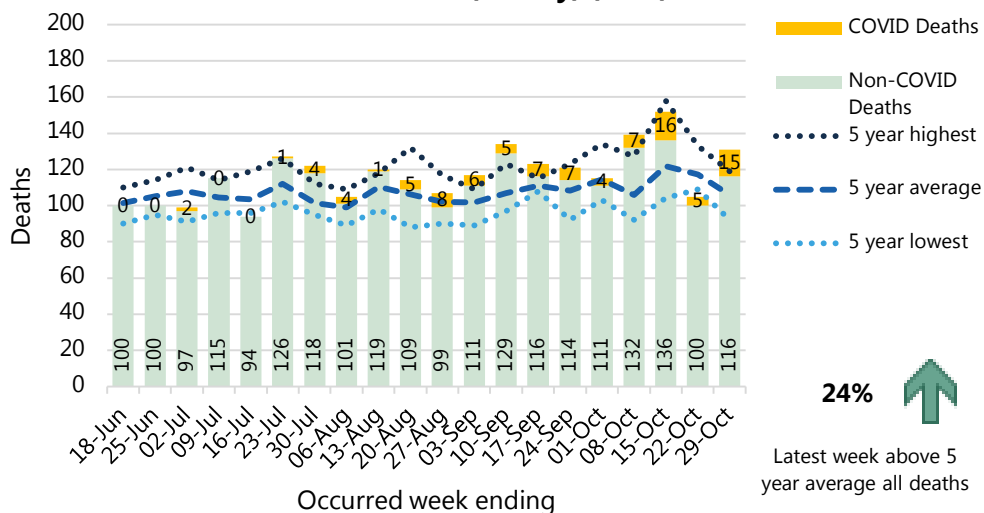
All COVID Deaths since the start of the pandemic in Somerset by Place of Death (ONS)



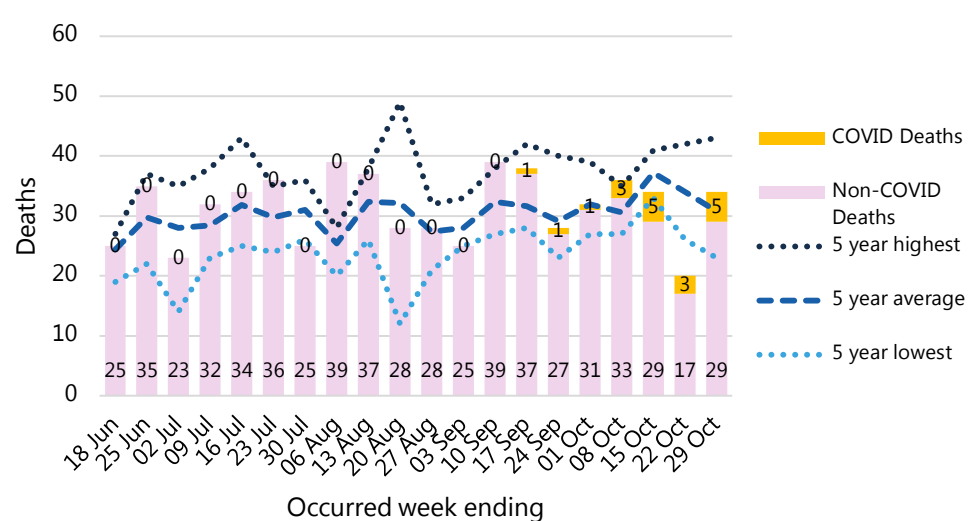
Somerset All Deaths (weekly) (ONS)



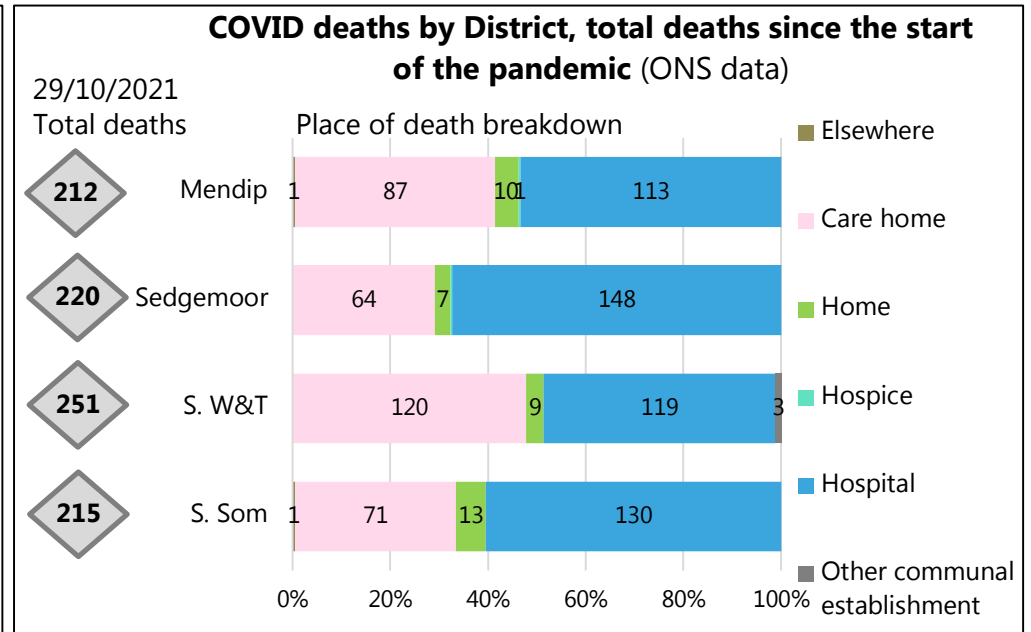
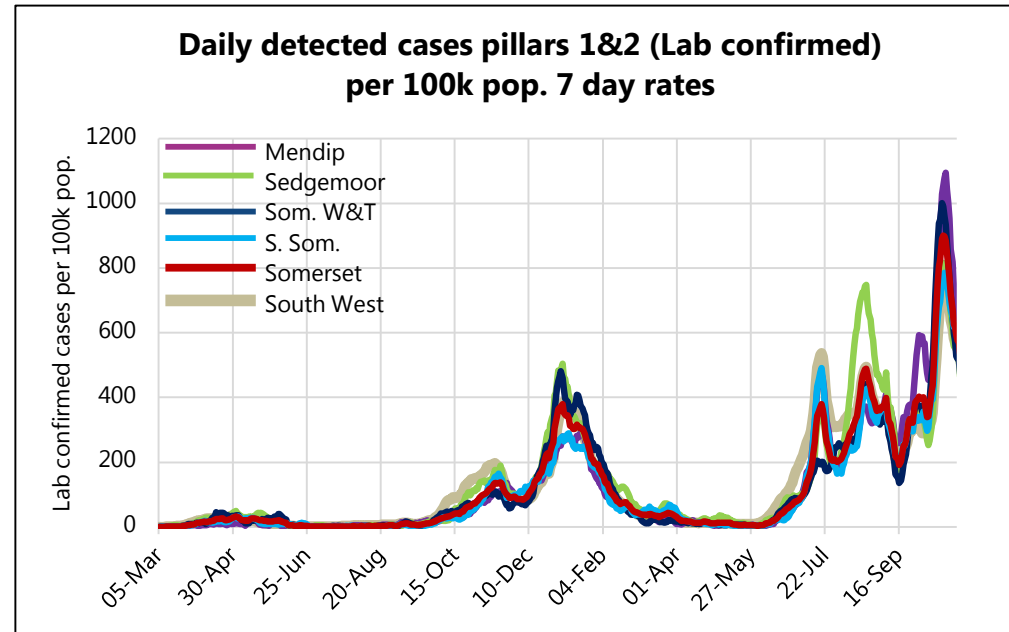
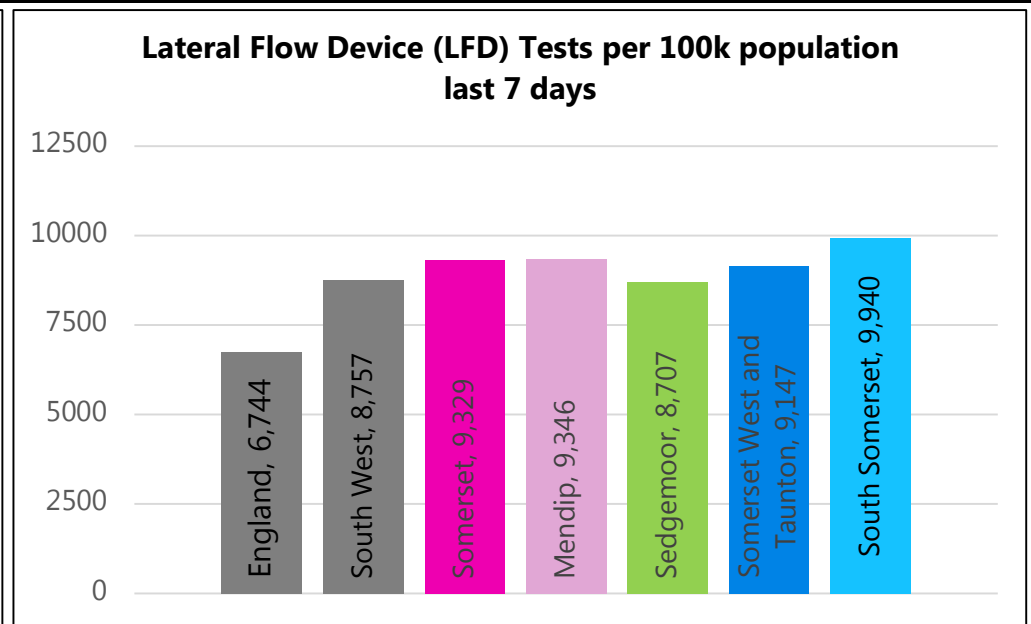
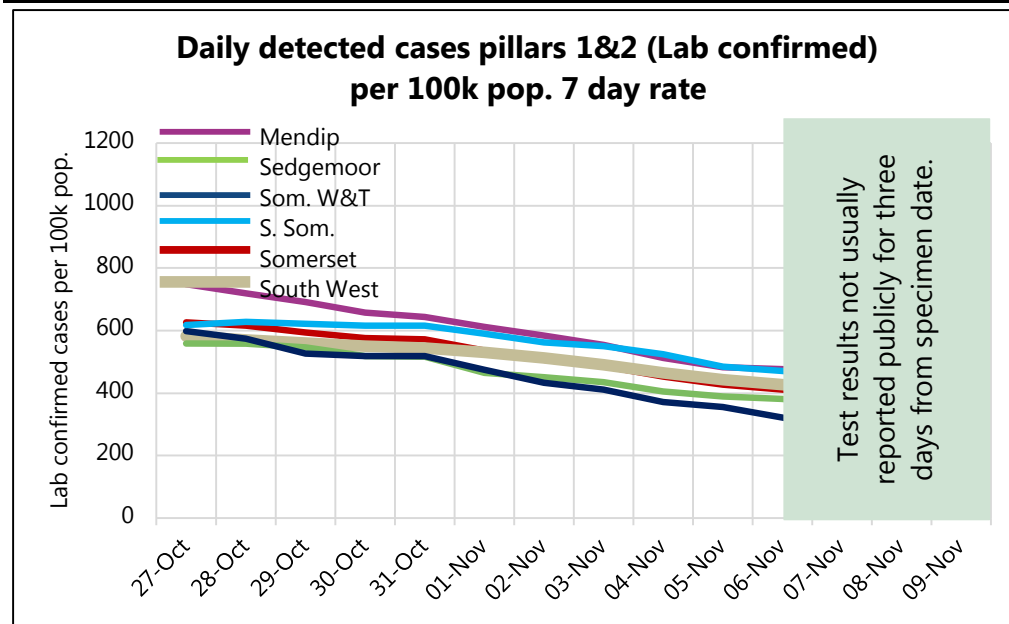
Somerset All Deaths (weekly) (ONS)



Somerset Care Home Deaths (weekly) (ONS)



Somerset COVID-19 Local Outbreak Management Plan Dashboard - District focus

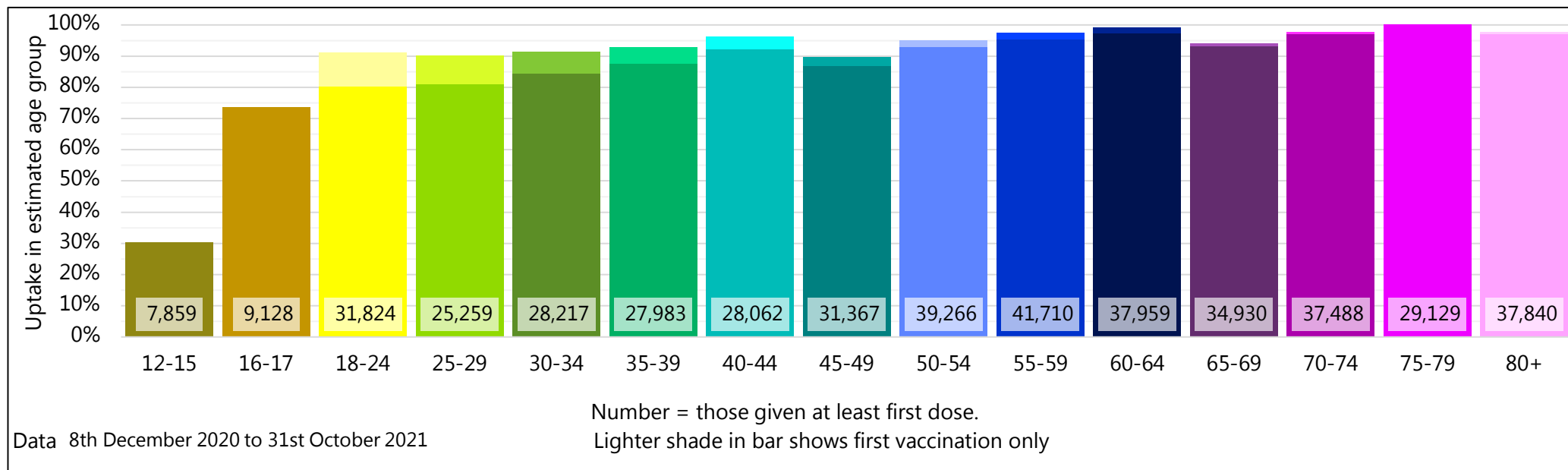


Somerset COVID-19 Local Outbreak Management Plan Dashboard - COVID Vaccinations

This page will be further developed once there is more routinely available data published nationally.

This vaccination data is NHS data, reported here with the agreement of the Somerset Clinical Commissioning Group. Specific queries regarding vaccination need to be directed towards the NHS. For more information on the local COVID-19 Vaccination Programme please see

[Covid-19 vaccinations in Somerset - Somerset CCG](#)



Population numbers are based on ONS 2020 estimates hence potential for uptake over 100%.

Percentage of 18+ population vaccinated at least once = 95.2%

Percentage of 18+ population vaccinated twice = 91.7%

Data for 12-15 year olds and 16-17 year olds is currently only being provided for the first dose.

Somerset COVID-19 Local Outbreak Management Plan Dashboard - Data

Data type	Next updated	How published	Link for more information
Lab confirmed cases: Pillars 1 & 2	10/11/2021	Published daily ~5pm with data to day before. By specimen date.	https://coronavirus.data.gov.uk/
Data by MSOA for the map	10/11/2021	Published daily. By specimen date.	None. Not publicly distributed. Data based on PHE reported cases. To note, this may differ slightly from data on the coronavirus.data.gov.uk website due to additional data cleaning by PHE.
R value from SAGE group	12/11/2021	Published weekly on Friday.	https://www.gov.uk/guidance/the-r-number-in-the-uk
Pillar 2 testing	10/11/2021	Published daily	https://coronavirus.data.gov.uk/
Death counts (ONS) County and district level	16/11/2021	Published weekly on Tuesday with data to the Friday 11 days before.	https://www.ons.gov.uk/peoplepopulationandcommunity/healthandsocialcare/causesofdeath/datasets/deathregistrationsandoccurrencesbylocalauthorityandhealthboard
Vaccination data	11/11/2021	Published weekly on Thursday with data to Sunday before.	https://www.england.nhs.uk/statistics/statistical-work-areas/covid-19-vaccinations/
Hospital Activity	11/11/2021	Published weekly on Thursday with data to Tuesday before.	https://www.england.nhs.uk/statistics/statistical-work-areas/covid-19-hospital-activity/

As of 2nd June 2020, numbers of lab-confirmed positive cases now include those identified by testing in all settings (pillars 1 and 2).

In January 2021, we changed the presentation of deaths data to be shown compared to the average and five year high and low deaths by date of occurrence rather than date of reporting. Deaths by date of reporting fluctuates more, especially when affected by bank holidays. Reporting by date of death does mean the latest week's figures are usually slightly incomplete when first reported due to delays in registrations of some deaths whereas the comparison years are more complete. For week 53 we have taken an average of 52 and week 1 comparison years.

Dashboard available at: <https://www.somerset.gov.uk/covid-19-dashboard/>