

## Detected cases



## Latest 7 day rate per 100k

11-Jul to 17-Jul



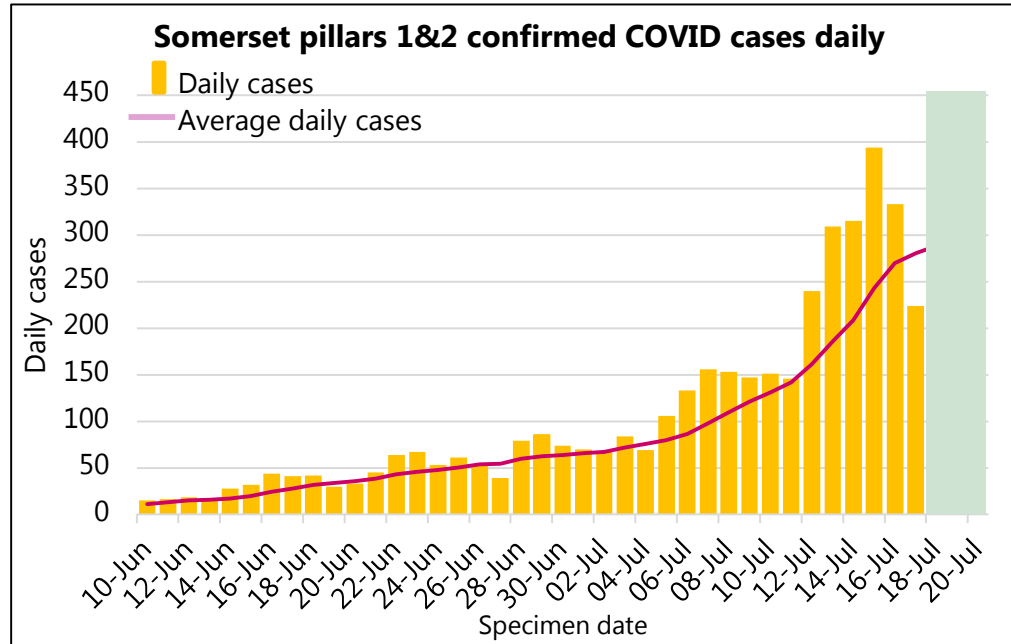
## Outbreaks and Clusters



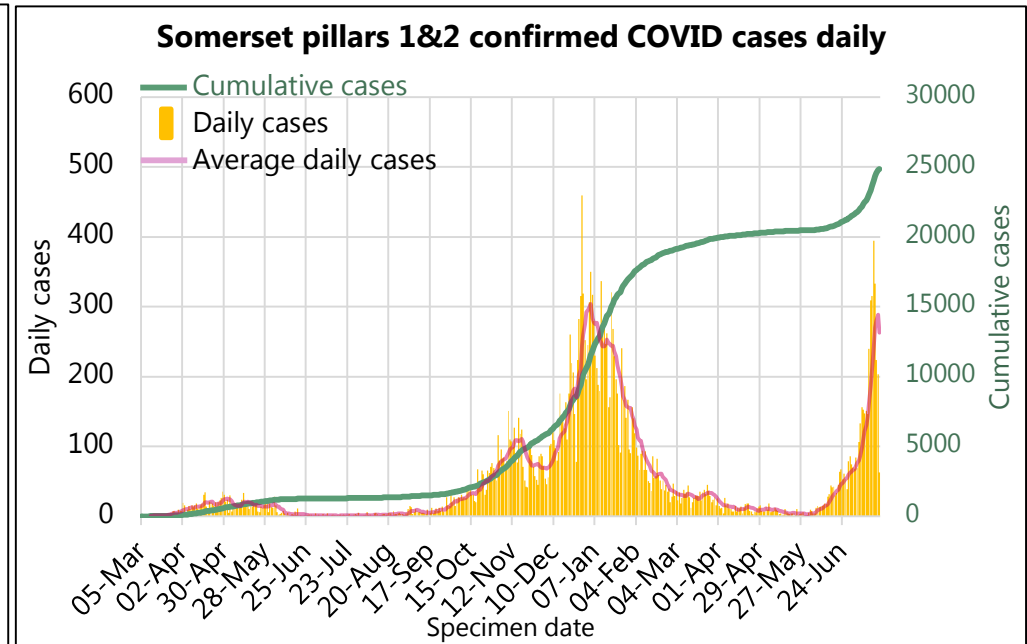
This represents the number of outbreaks and clusters currently being managed. Outbreaks are any situation with two or more cases, where at least two cases are known to be related to each other. Clusters are any incidents being managed at the same setting with two or more cases but where there is no established link between any of the cases.



## Most recent days of cases



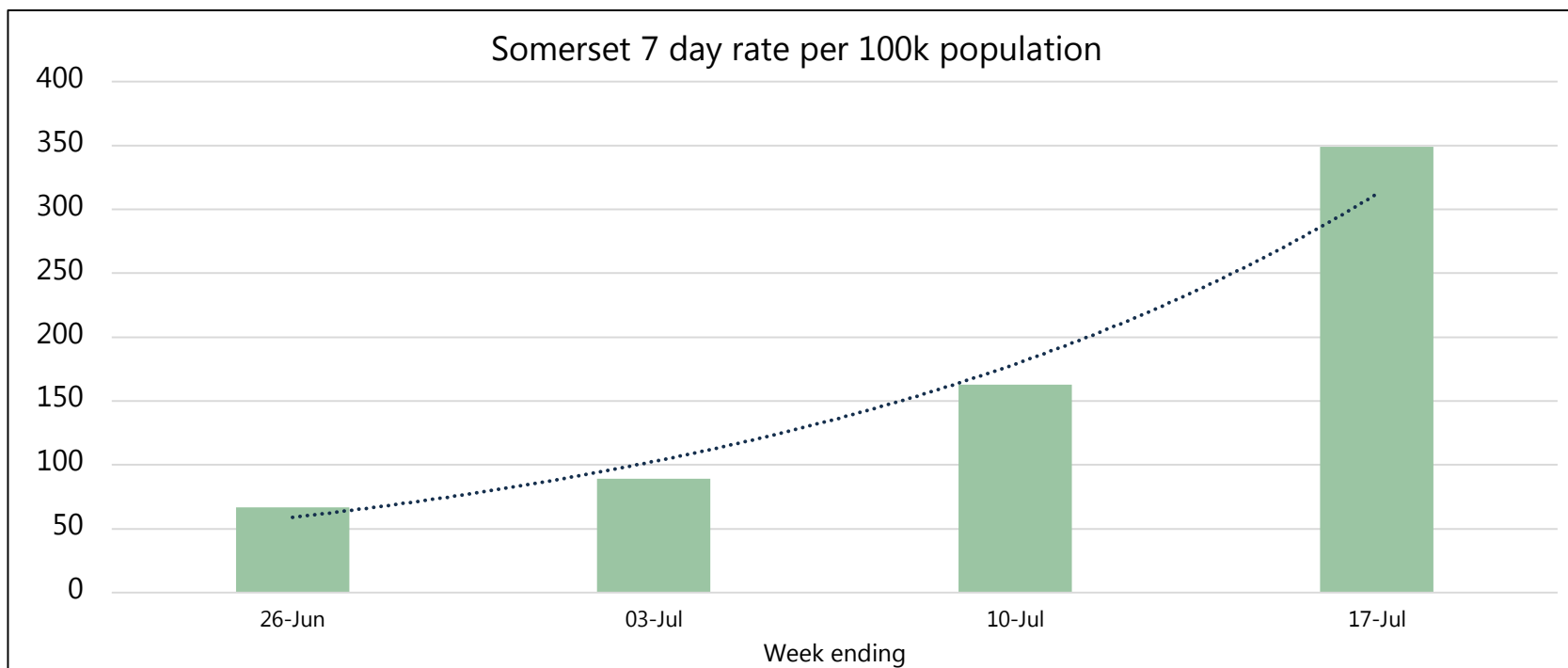
## Overall profile of the epidemic in Somerset



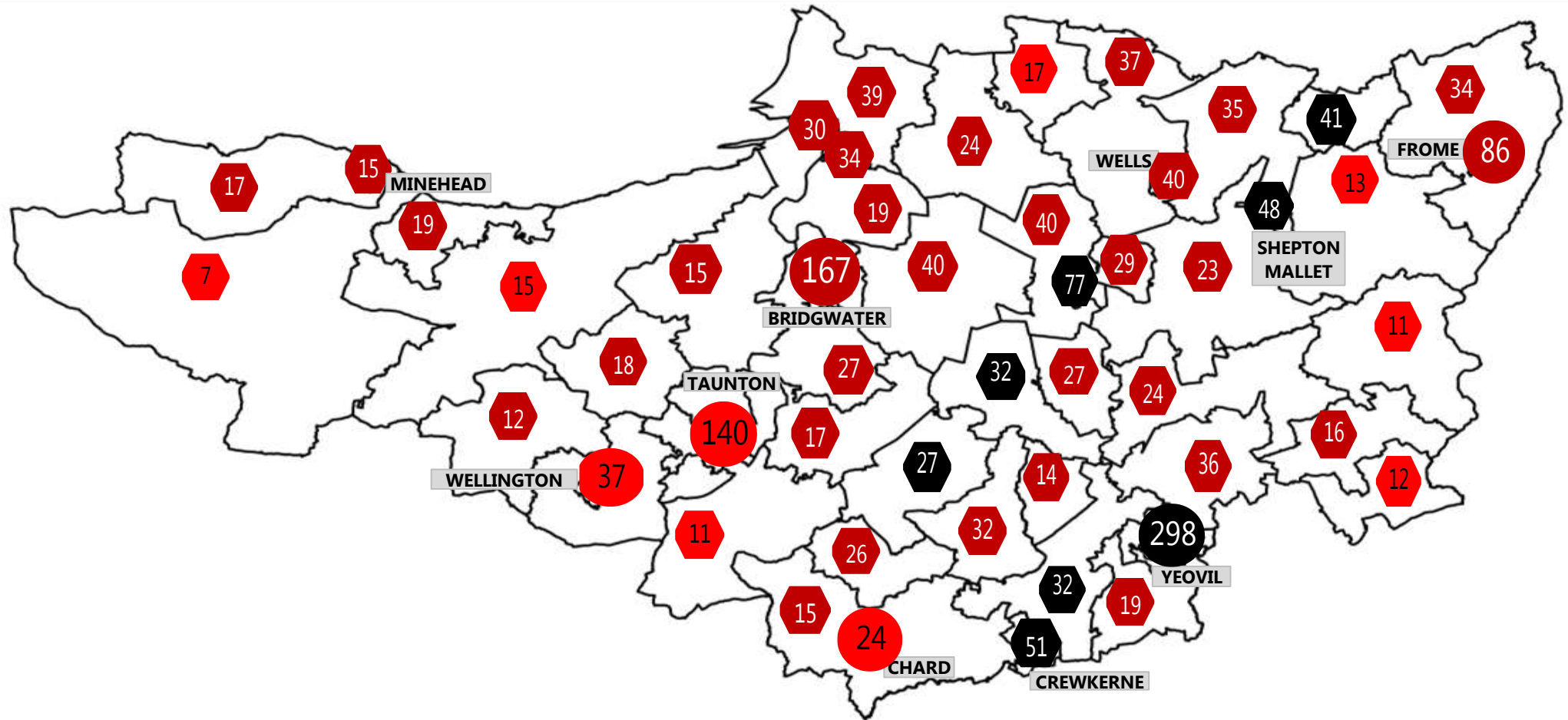
# Somerset COVID-19 Local Outbreak Management Plan Dashboard - Cases

Weekly cases (excludes most recent three days with incompletely reported results)

District	20-Jun to 26-Jun	7 day rate per 100k	27-Jun to 03-Jul	7 day rate per 100k	04-Jul to 10-Jul	7 day rate per 100k	11-Jul to 17-Jul	7 day rate per 100k
Mendip	56	48.4	107	92.6	212	183.4	503	435.2
Sedgemoor	113	91.7	122	99.0	171	138.8	412	334.5
Som W & Taun.	128	82.5	131	84.5	221	142.5	308	198.6
Sth Somerset	79	46.9	140	83.2	311	184.7	738	438.4
<b>Somerset</b>	376	<b>66.9</b>	500	<b>88.9</b>	915	<b>162.7</b>	1961	<b>348.8</b>



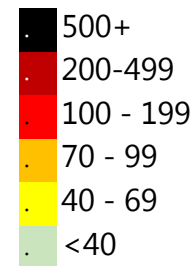
# Somerset COVID-19 Local Outbreak Management Plan Dashboard - Cases Map



**Date range** 11-Jul to 17-Jul

The numbers in this map show the current cases in the past 7 days, the colour of the tag shows the equivalent rate of positive cases per 100,000 population over a 7 day period. Case numbers in Taunton, Wellington, Chard, Yeovil, Bridgwater and Frome have been combined across the urban area with rates based on the combined area population.

**Weekly rate per 100k**



# Somerset COVID-19 Local Outbreak Management Plan Dashboard - Wider Context

## Latest R number range for the South West

# 1.2 - 1.5

Last updated on Friday 16 Jul 2021

Produced by:

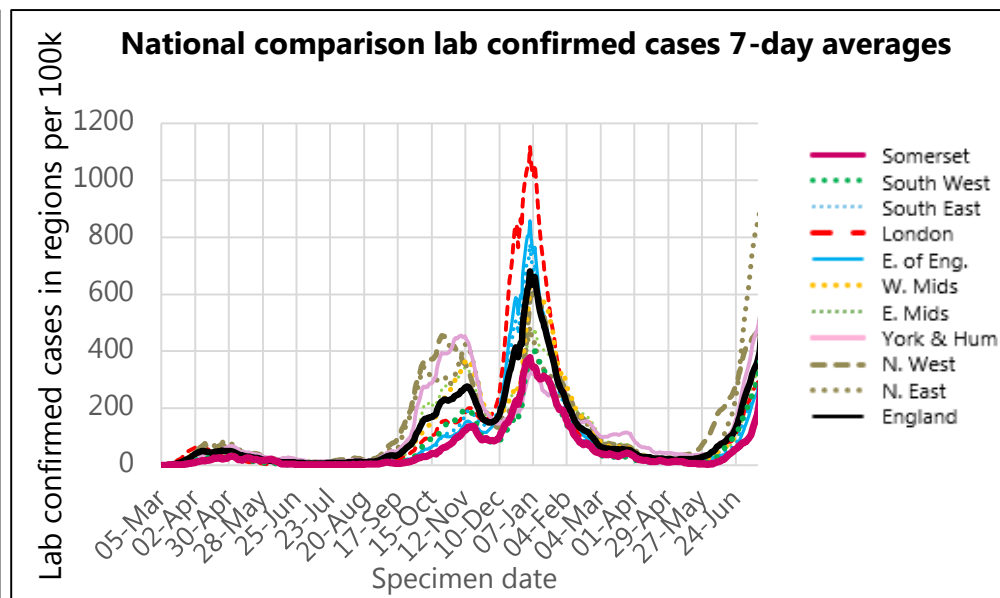
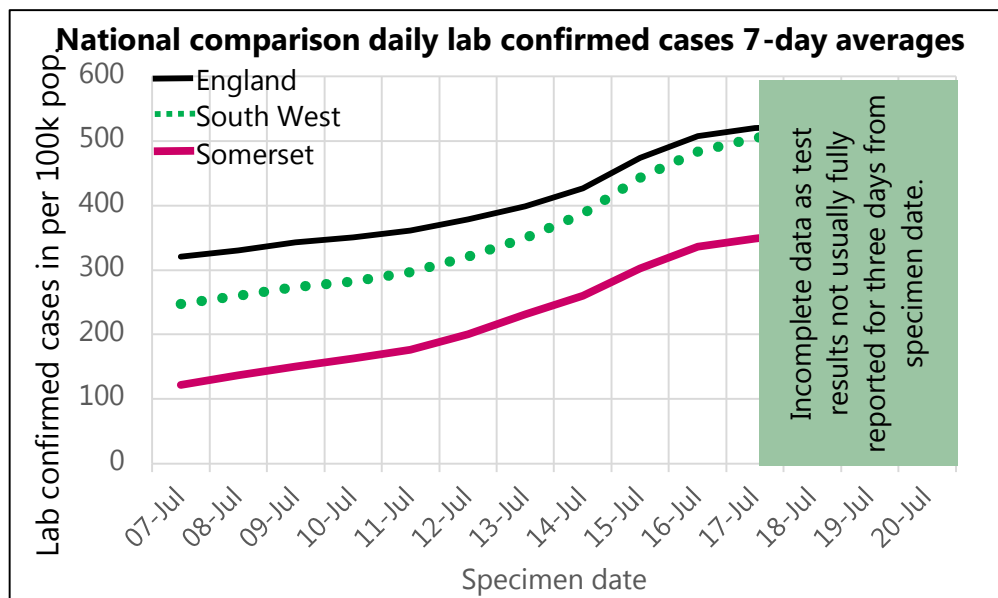
UK Government Scientific Advisory Group for Emergencies (SAGE)

## What is R?

The reproduction number (R) is the average number of secondary infections produced by 1 infected person.

An R number of 1 means that on average every person who is infected will infect 1 other person, meaning the total number of new infections is stable.

Region	R
UK	No longer produced
England	1.2 - 1.4
East of England	1.2 - 1.5
London	1.2 - 1.4
Midlands	1.3 - 1.5
NE and Yorks	1.2 - 1.6
North West	1.0 - 1.3
South East	1.3 - 1.6
South West	1.2 - 1.5



# Somerset COVID-19 Local Outbreak Management Plan Dashboard - Deaths

COVID deaths week ending

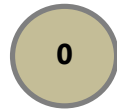
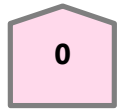
09/07/2021

All COVID

Hospital

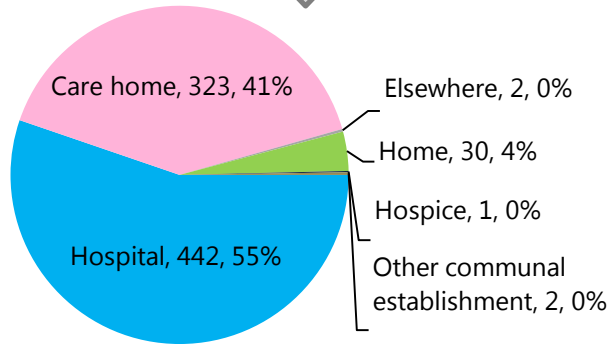
Care Home

Other

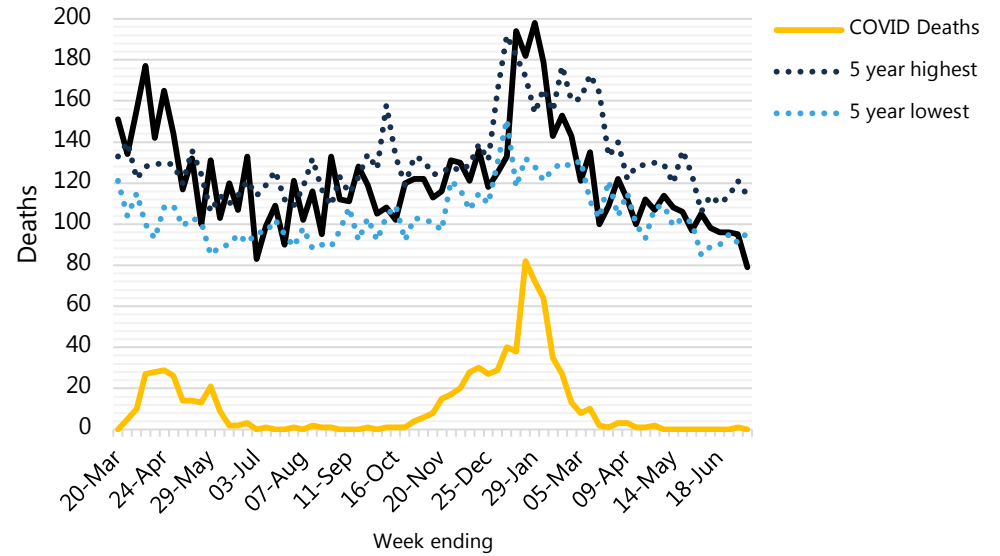


## All COVID Deaths in Somerset by Place of Death (ONS)

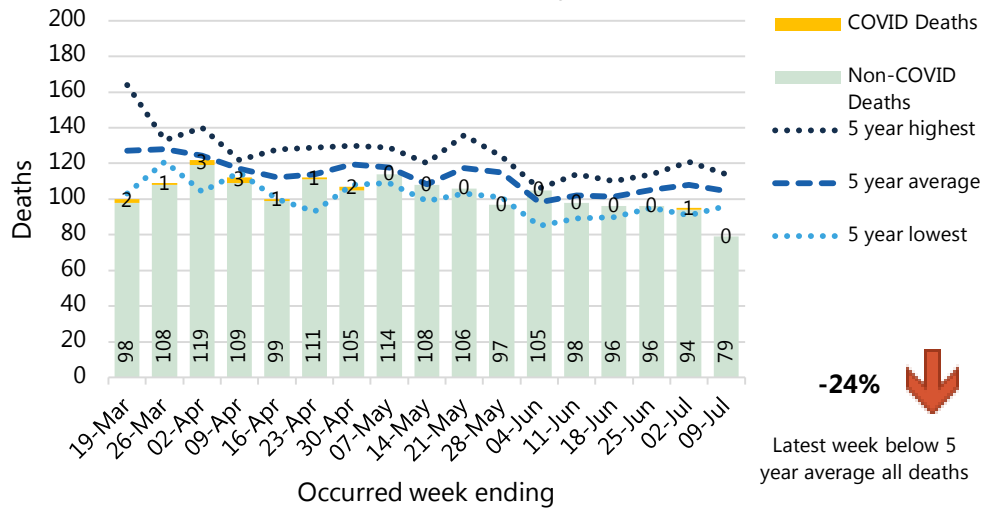
Total 800 09/07/2021



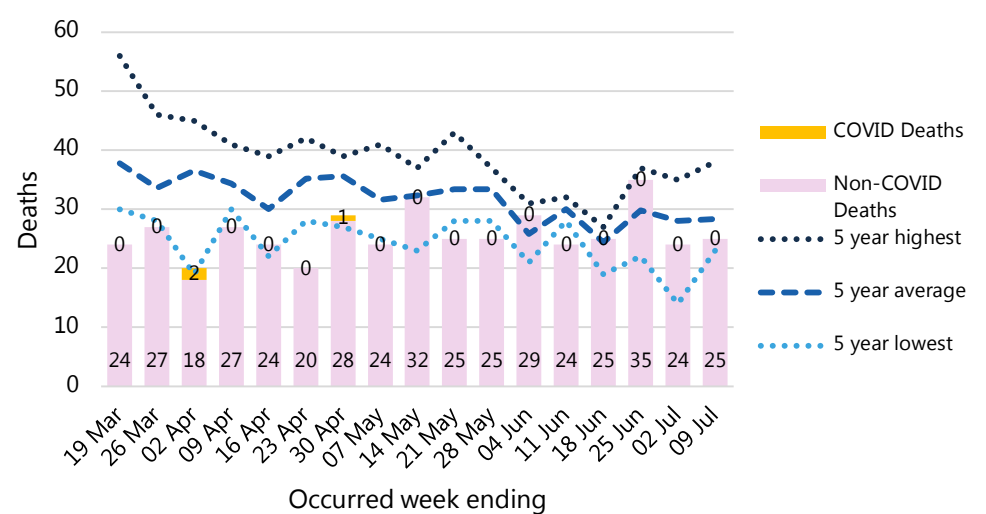
## Somerset All Deaths (weekly) (ONS)



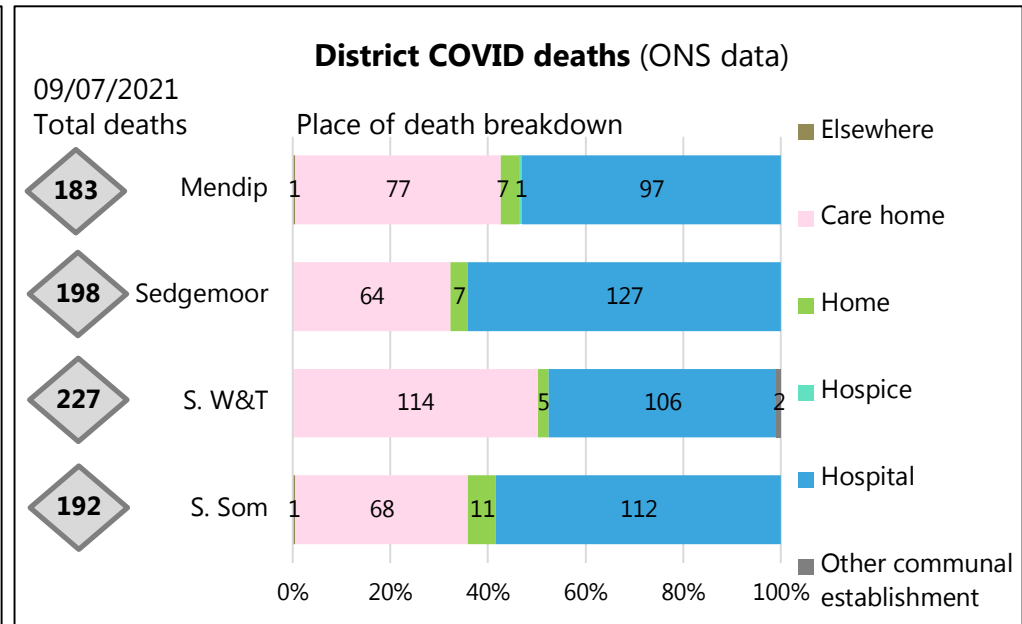
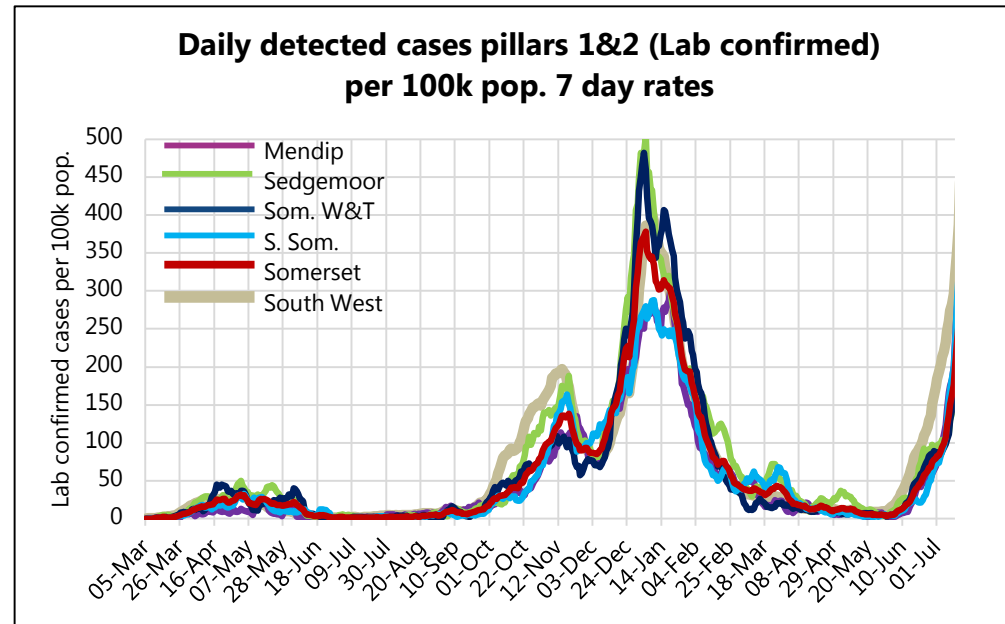
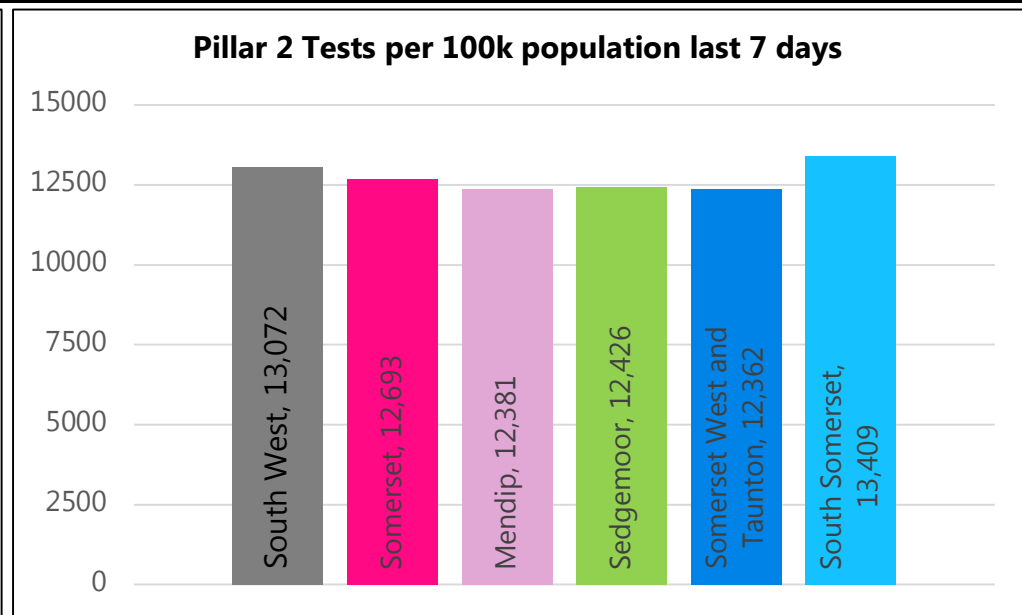
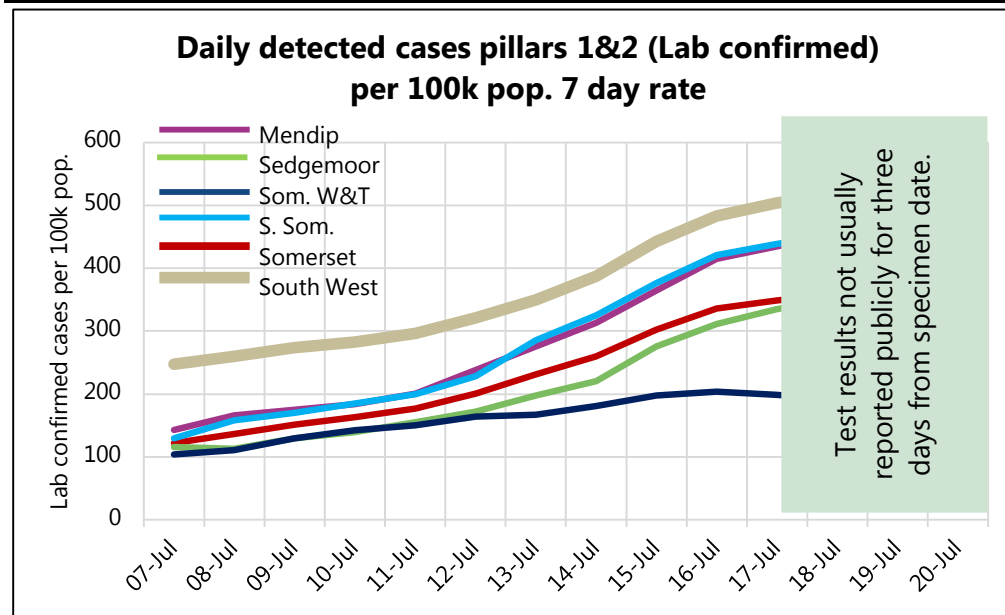
## Somerset All Deaths (weekly) (ONS)



## Somerset Care Home Deaths (weekly) (ONS)



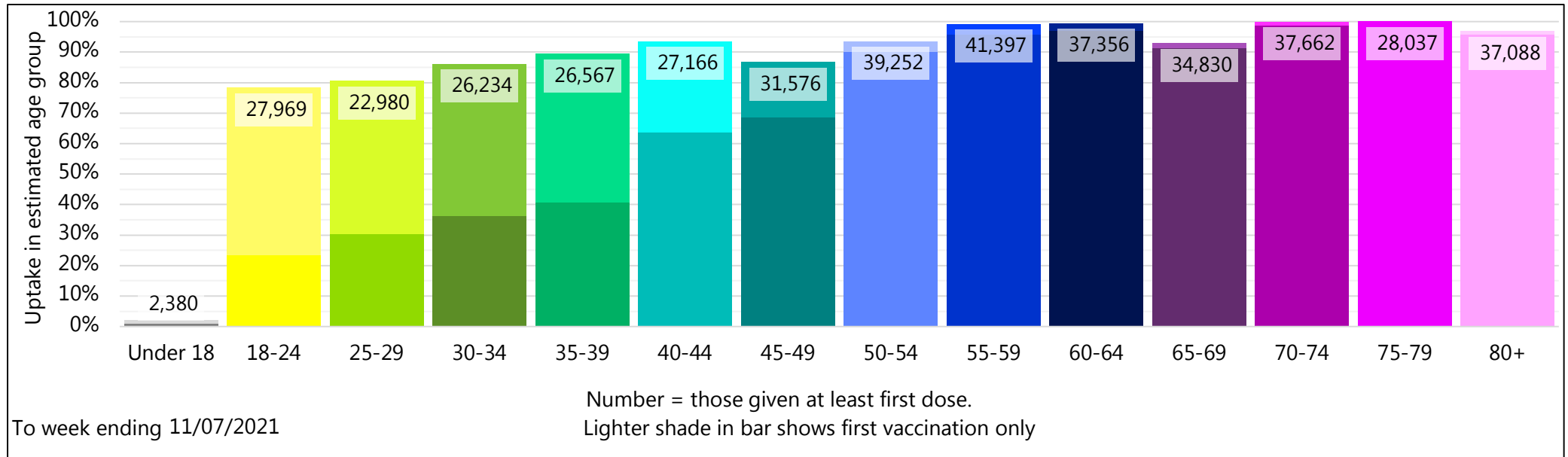
# Somerset COVID-19 Local Outbreak Management Plan Dashboard - District focus



# Somerset COVID-19 Local Outbreak Management Plan Dashboard - COVID Vaccinations

This page will be further developed once there is more routinely available data published nationally.

This vaccination data is NHS data, reported here with the agreement of the Somerset Clinical Commissioning Group. Specific queries regarding vaccination need to be directed towards the NHS. For more information on the local COVID-19 Vaccination Programme please see [Covid-19 vaccinations in Somerset - Somerset CCG](#)



Population numbers are based on ONS 2019 estimates hence potential for uptake over 100%.

Percentage of 18+ population vaccinated at least once = 92.7%

Percentage of 18+ population vaccinated twice = 73.9%

# Somerset COVID-19 Local Outbreak Management Plan Dashboard - Data

Data type	Next updated	How published	Link for more information
Lab confirmed cases: Pillars 1 & 2	21/07/2021	Published daily ~5pm with data to day before. By specimen date.	<a href="https://coronavirus.data.gov.uk/">https://coronavirus.data.gov.uk/</a>
Data by MSOA for the map	21/07/2021	Published daily. By specimen date.	None. Not publicly distributed. Data based on PHE reported cases. To note, this may differ slightly from data on the coronavirus.data.gov.uk website due to additional data cleaning by PHE.
R value from SAGE group	23/07/2021	Published weekly on Friday.	<a href="https://www.gov.uk/guidance/the-r-number-in-the-uk">https://www.gov.uk/guidance/the-r-number-in-the-uk</a>
Pillar 2 testing	21/07/2021	Summarised weekly on Wednesdays and Thursdays	None. Not publicly distributed.
Death counts (ONS) County and district level	27/07/2021	Published weekly on Tuesday with data to the Friday 11 days before.	<a href="https://www.ons.gov.uk/peoplepopulationandcommunity/healthandsocialcare/causesofdeath/datasets/deathregistrationsandoccurrencesbylocalauthorityandhealthboard">https://www.ons.gov.uk/peoplepopulationandcommunity/healthandsocialcare/causesofdeath/datasets/deathregistrationsandoccurrencesbylocalauthorityandhealthboard</a>
Vaccination data	22/07/2021	Published weekly on Thursday.	<a href="https://www.england.nhs.uk/statistics/statistical-work-areas/covid-19-vaccinations/">https://www.england.nhs.uk/statistics/statistical-work-areas/covid-19-vaccinations/</a>

As of 2nd June 2020, numbers of lab-confirmed positive cases now include those identified by testing in all settings (pillars 1 and 2).

In January 2021, we changed the presentation of deaths data to be shown compared to the average and five year high and low deaths by date of occurrence rather than date of reporting. Deaths by date of reporting fluctuates more, especially when affected by bank holidays. Reporting by date of death does mean the latest week's figures are usually slightly incomplete when first reported due to delays in registrations of some deaths whereas the comparison years are more complete. For week 53 we have taken an average of 52 and week 1 comparison years.

Dashboard available at: <https://www.somerset.gov.uk/covid-19-dashboard/>