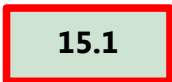


Detected cases

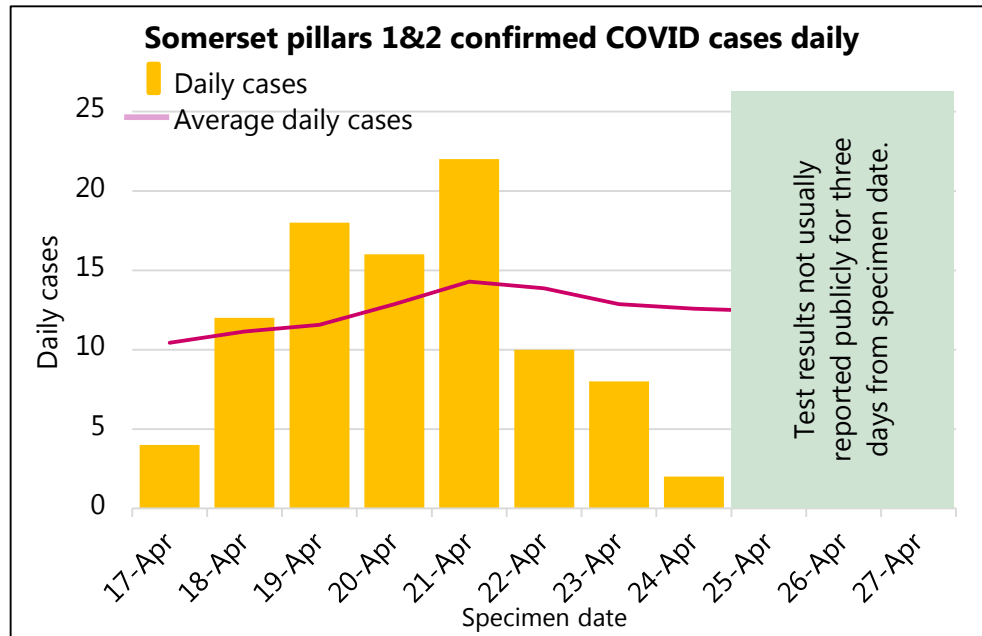


Latest 7 day rate per 100k

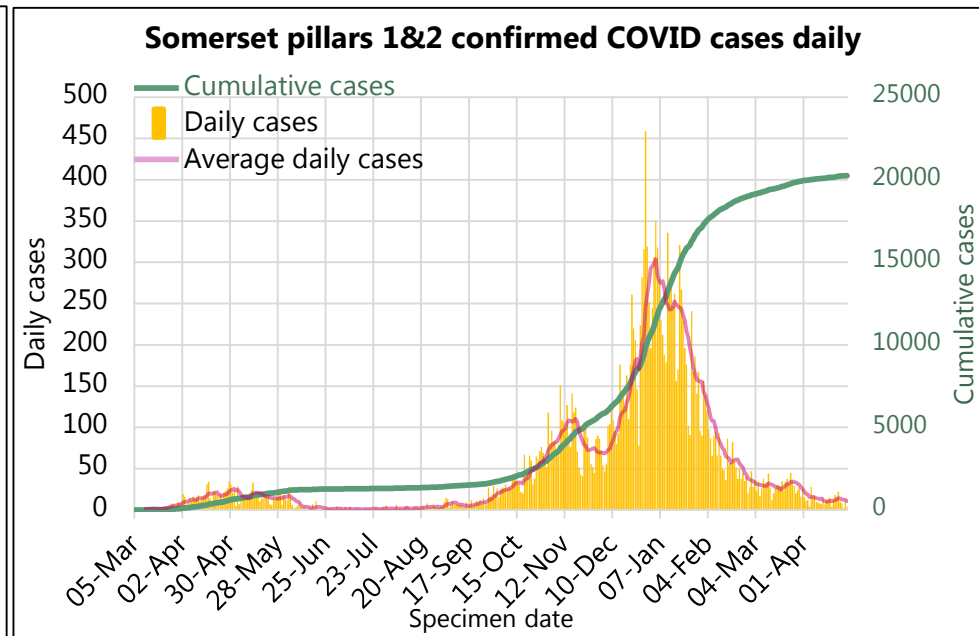
18-Apr to 24-Apr



Most recent days of cases



Overall profile of the epidemic in Somerset



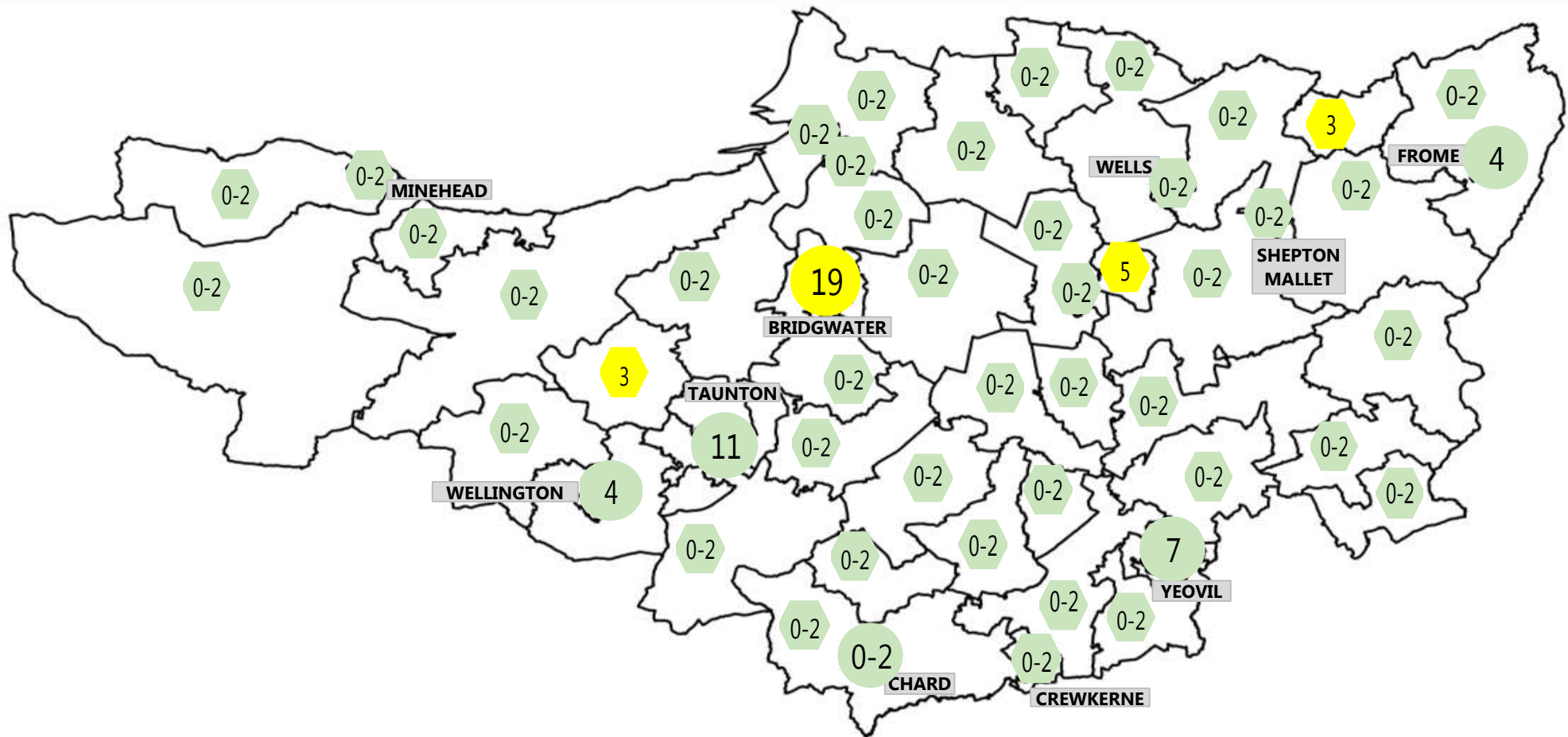
Somerset COVID-19 Local Outbreak Management Plan Dashboard - Cases

Weekly cases (excludes most recent three days with incompletely reported results)

District	28-Mar to 03-Apr	7 day rate per 100k	04-Apr to 10-Apr	7 day rate per 100k	11-Apr to 17-Apr	7 day rate per 100k	18-Apr to 24-Apr	7 day rate per 100k
Mendip	11	9.5	19	16.4	15	13.0	20	17.3
Sedgemoor	46	37.3	26	21.1	22	17.9	28	22.7
Som W & Taun.	23	14.8	19	12.2	14	9.0	19	12.2
Sth Somerset	50	29.7	29	17.2	22	13.1	18	10.7
Somerset	130	23.1	93	16.5	73	13.0	85	15.1



Somerset COVID-19 Local Outbreak Management Plan Dashboard - Cases Map

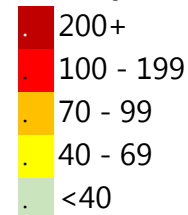


Date range 18-Apr to 24-Apr

March 2021 - we have updated the colour scheme to reflect the new lower case numbers.

The numbers in this map show the current cases in the past 7 days, the colour of the tag shows the equivalent rate of positive cases per 100,000 population over a 7 day period. Case numbers in Taunton, Wellington, Chard, Yeovil, Bridgwater and Frome have been combined across the urban area with rates based on the combined area population.

Weekly rate per 100k



Somerset COVID-19 Local Outbreak Management Plan Dashboard - Wider Context

Latest R number range for the South West

0.7 - 1.1

Last updated on Friday 23 Apr 2021

Produced by:

UK Government Scientific Advisory Group for Emergencies (SAGE)

What is R?

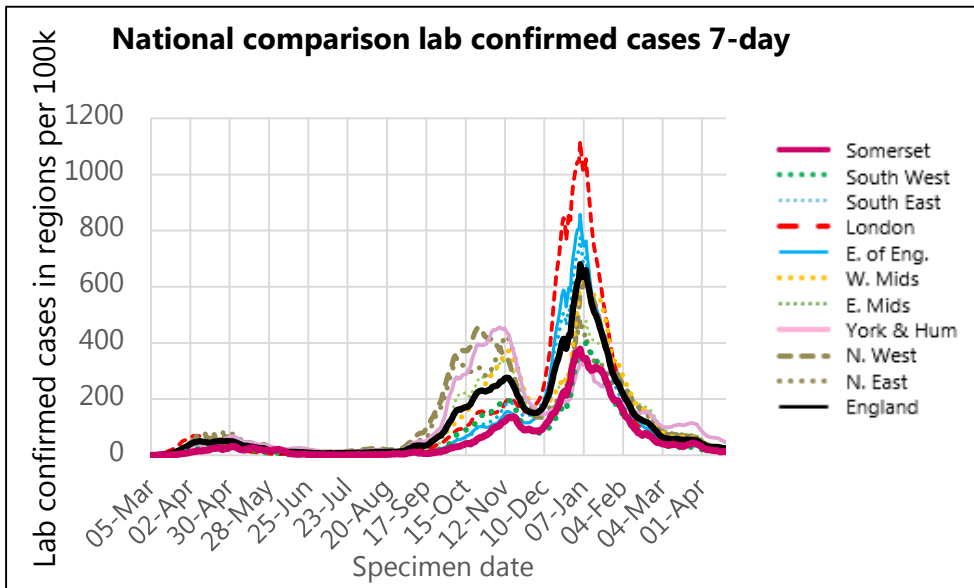
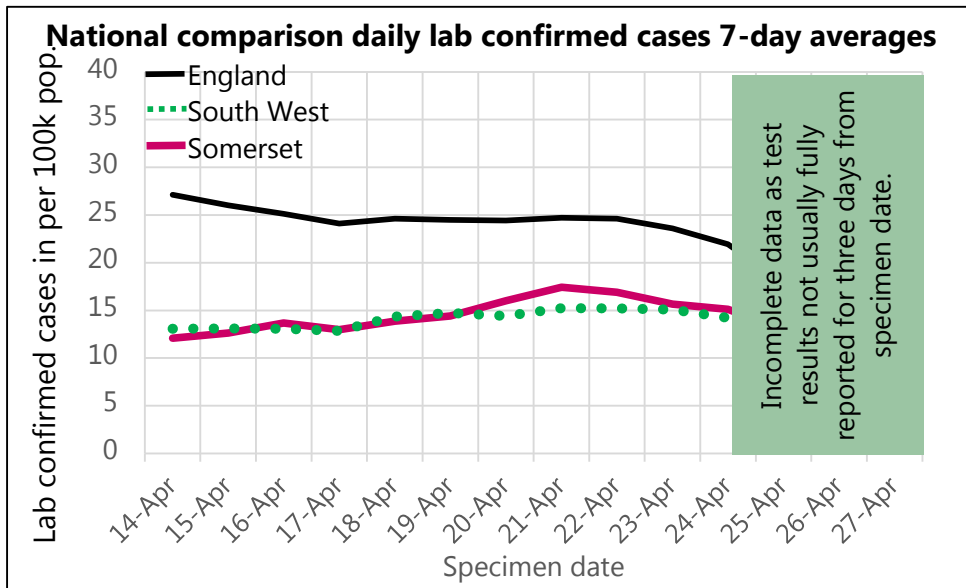
The reproduction number (R) is the average number of secondary infections produced by 1 infected person.

An R number of 1 means that on average every person who is infected will infect 1 other person, meaning the total number of new infections is stable.

Region

R

Region	R
UK	None agreed this week
England	0.8 - 1.0
East of England	0.8 - 1.1
London	0.8 - 1.1
Midlands	0.7 - 0.9
NE and Yorks	0.7 - 1.0
North West	0.7 - 0.9
South East	0.7 - 0.9
South West	0.7 - 1.1



Somerset COVID-19 Local Outbreak Management Plan Dashboard - Deaths

COVID deaths week ending

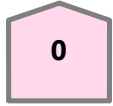
📅 16/04/2021

All COVID

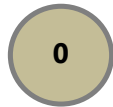
Hospital



Care Home

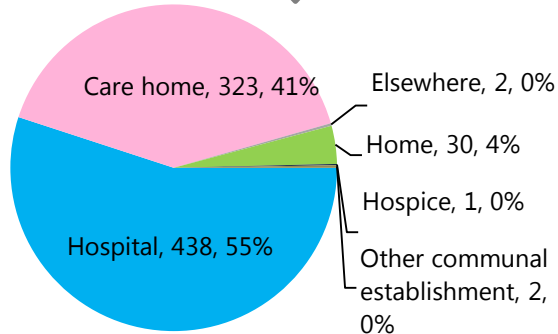


Other

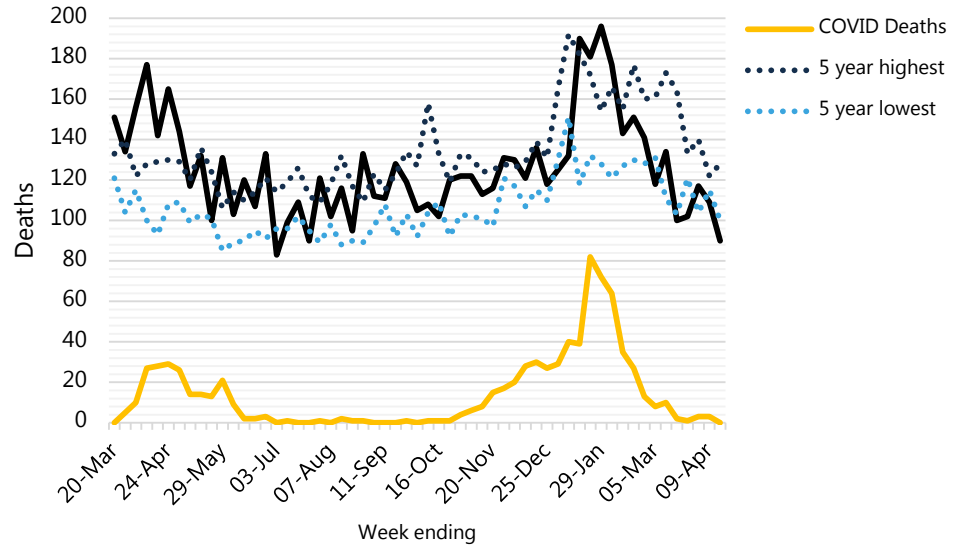


All COVID Deaths in Somerset by Place of Death (ONS)

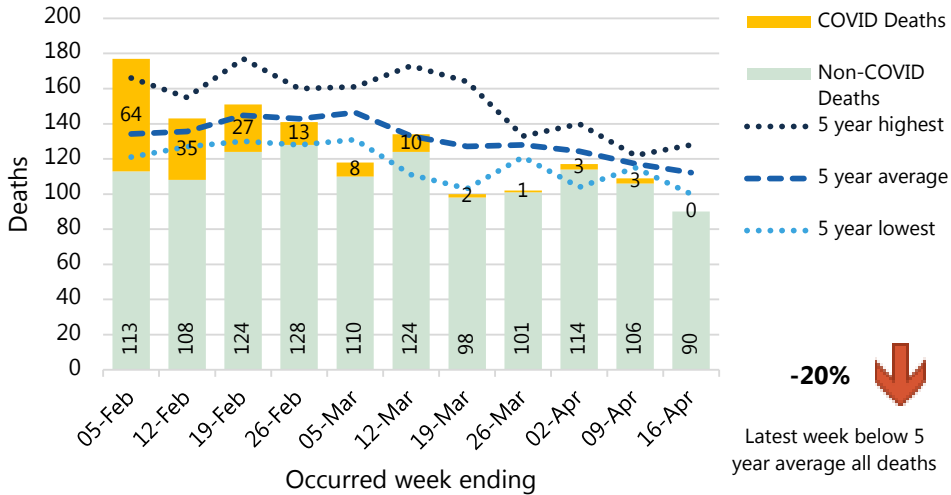
Total 796 16/04/2021



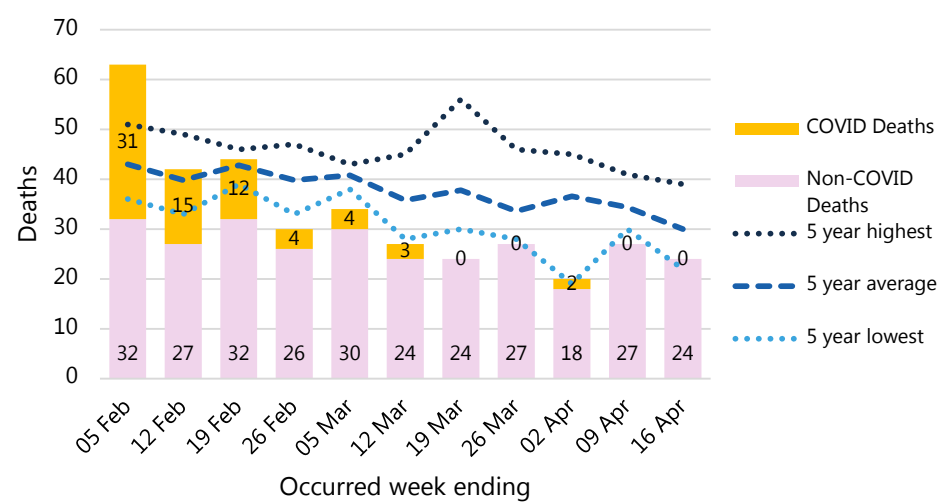
Somerset All Deaths (weekly) (ONS)



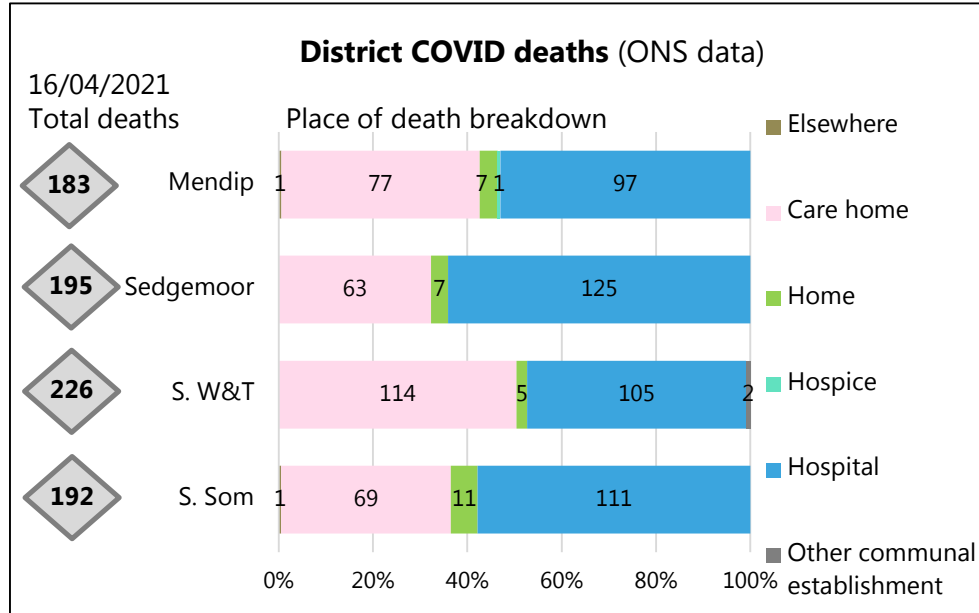
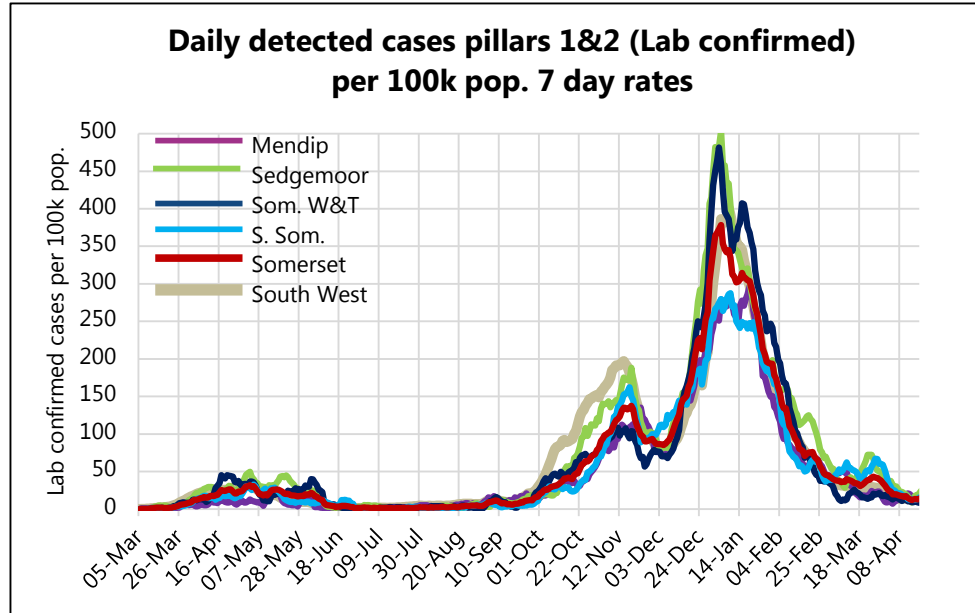
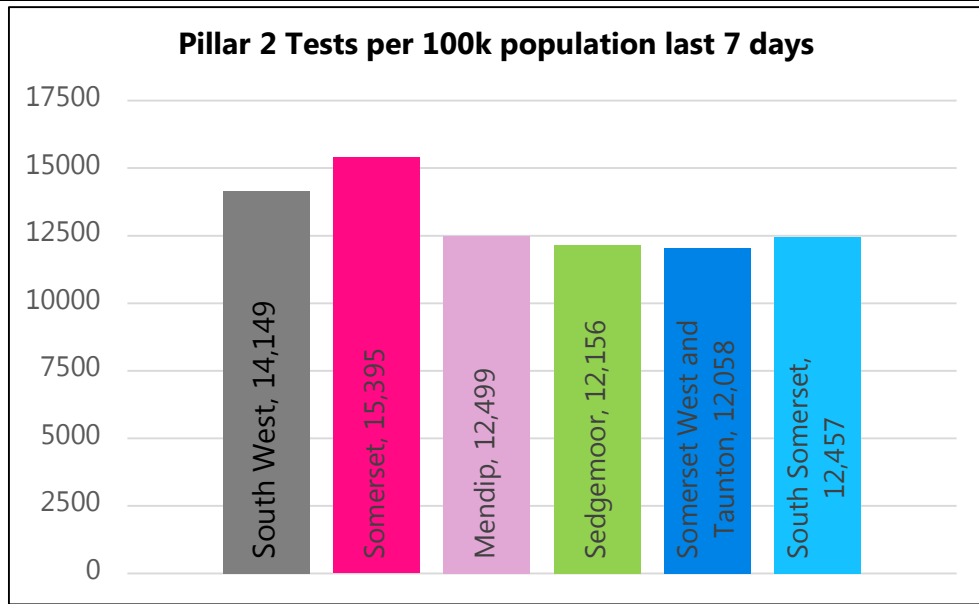
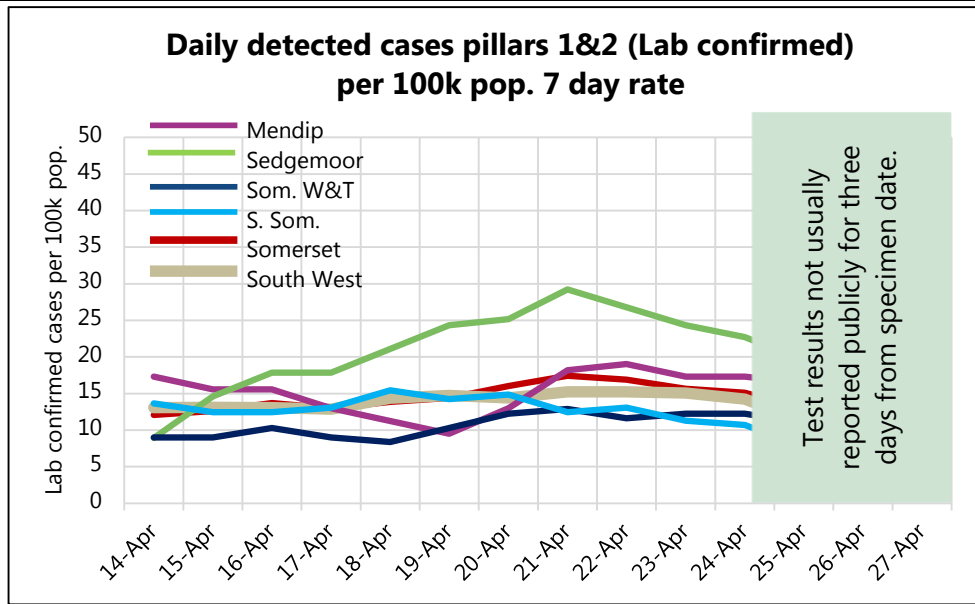
Somerset All Deaths (weekly) (ONS)



Somerset Care Home Deaths (weekly) (ONS)



Somerset COVID-19 Local Outbreak Management Plan Dashboard - District focus

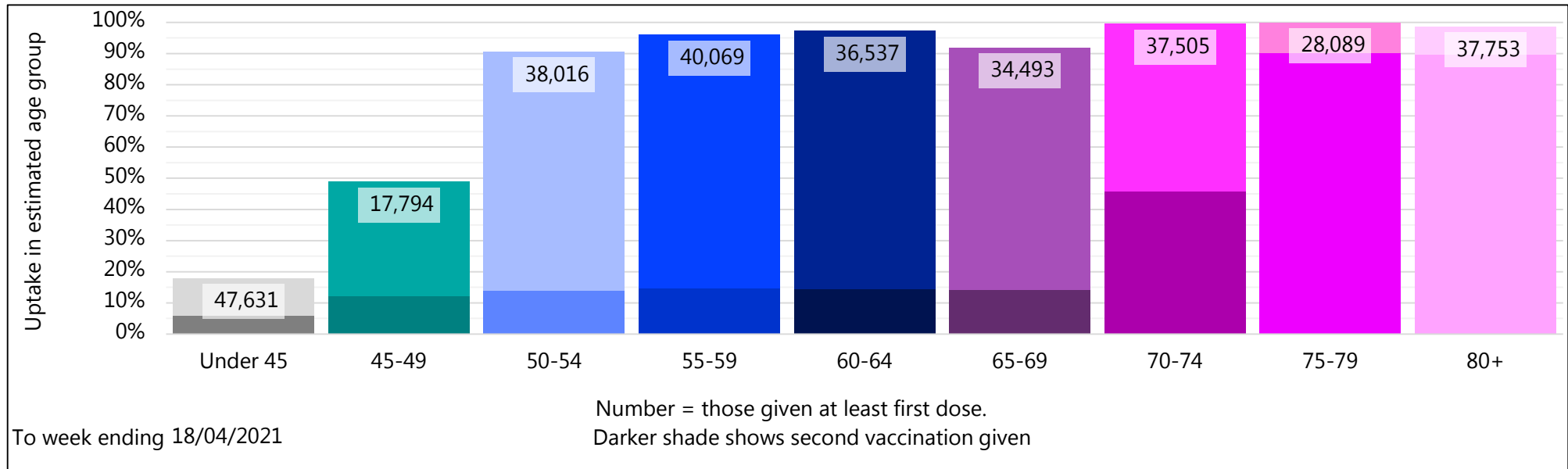


Somerset COVID-19 Local Outbreak Management Plan Dashboard - COVID Vaccinations

This page will be further developed once there is more routinely available data published nationally.

This vaccination data is NHS data, reported here with the agreement of the Somerset Clinical Commissioning Group. Specific queries regarding vaccination need to be directed towards the NHS. For more information on the local COVID-19 Vaccination Programme please see

[Covid-19 vaccinations in Somerset - Somerset CCG](#)



Population numbers are based on ONS 2019 estimates hence potential for uptake over 100%.

Somerset COVID-19 Local Outbreak Management Plan Dashboard - Data

Data type	Next updated	How published	Link for more information
Lab confirmed cases: Pillars 1 & 2	28/04/2021	Published daily ~5pm with data to day before. By specimen date.	https://coronavirus.data.gov.uk/
Data by MSOA for the map	28/04/2021	Published daily. By specimen date.	None. Not publicly distributed. Data based on PHE reported cases. To note, this may differ slightly from data on the coronavirus.data.gov.uk website due to additional data cleaning by PHE.
R value from SAGE group	30/04/2021	Published weekly on Friday.	https://www.gov.uk/guidance/the-r-number-in-the-uk
Pillar 2 testing	04/05/2021	Summarised weekly on Wednesdays and Thursdays	None. Not publicly distributed.
Death counts (ONS) County and district level	04/05/2021	Published weekly on Tuesday with data to the Friday 11 days before.	https://www.ons.gov.uk/peoplepopulationandcommunity/healthandsocialcare/causesofdeath/datasets/deathregistrationsandoccurrencesbylocalauthorityandhealthboard
Vaccination data	29/04/2021	Published weekly on Thursday.	https://www.england.nhs.uk/statistics/statistical-work-areas/covid-19-vaccinations/

As of 2nd June 2020, numbers of lab-confirmed positive cases now include those identified by testing in all settings (pillars 1 and 2).

NB The higher case numbers seen in early June include a number of cases that have been falsely identified as positive following an issue at the laboratory. For further information please see the following statement from Somerset NHS Foundation Trust <https://somersetft.nhs.uk/?news=issue-affecting-some-covid-19-test-results-for-some-inpatients-at-musgrove-park-hospital>

In January 2021, we changed the presentation of deaths data to be shown compared to the average and five year high and low deaths by date of occurrence rather than date of reporting. Deaths by date of reporting fluctuates more, especially when affected by bank holidays. Reporting by date of death does mean the latest week's figures are usually slightly incomplete when first reported due to delays in registrations of some deaths whereas the comparison years are more complete. For week 53 we have taken an average of 52 and week 1 comparison years.

Dashboard available at: <https://www.somerset.gov.uk/covid-19-dashboard/>